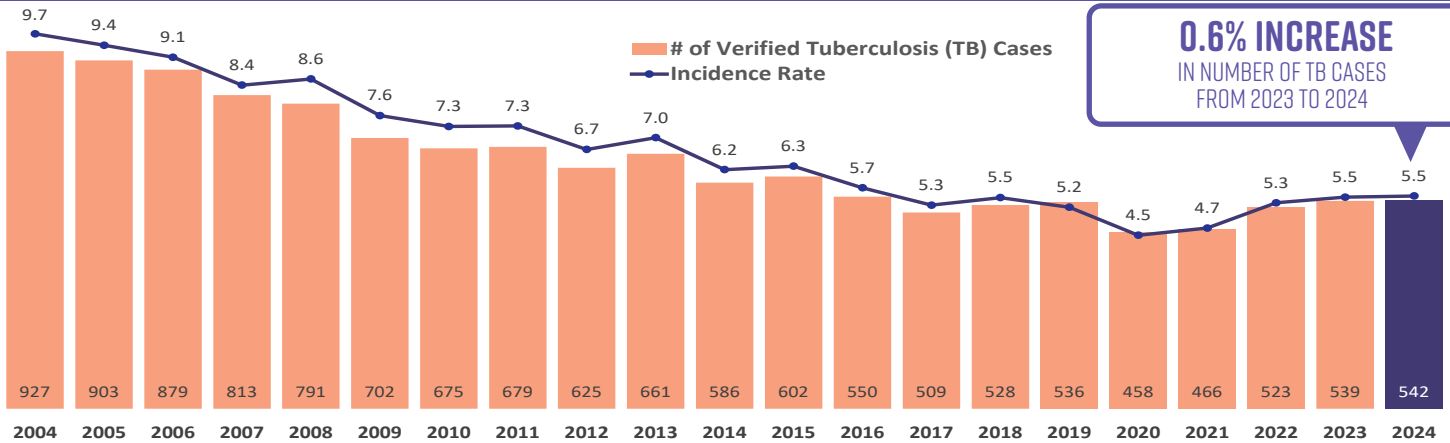


TUBERCULOSIS

in Los Angeles County, 2024



0.6% INCREASE
IN NUMBER OF TB CASES
FROM 2023 TO 2024

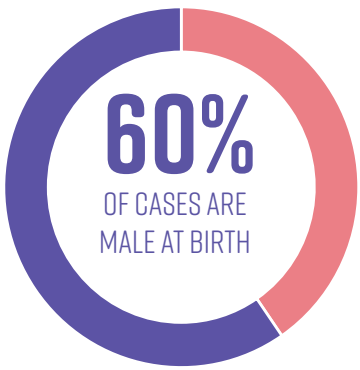
2,719 TB EVALUATIONS INITIATED (2024)

16% INCREASE IN TB EVALUATIONS VS. 2023

12% ESTIMATED CASES DUE TO RECENT TRANSMISSION (2023)*

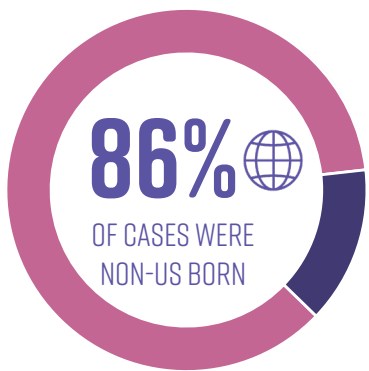
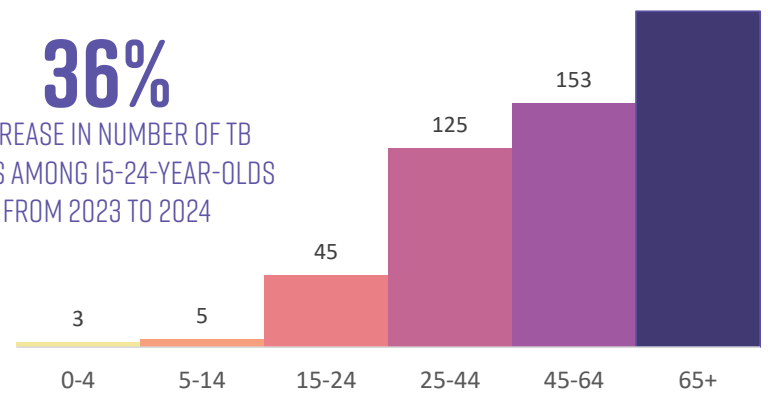
674,425 ESTIMATED PERSONS WITH LATENT TB (2024)**

*PRELIMINARY ESTIMATE BASED ON 2023 CDC GENOTYPED & RECENT TRANSMISSION DATA (NOT PLAUSIBLE SOURCE METHOD)
**PROVIDED BY THE CALIFORNIA DEPARTMENT OF PUBLIC HEALTH TB CONTROL BRANCH

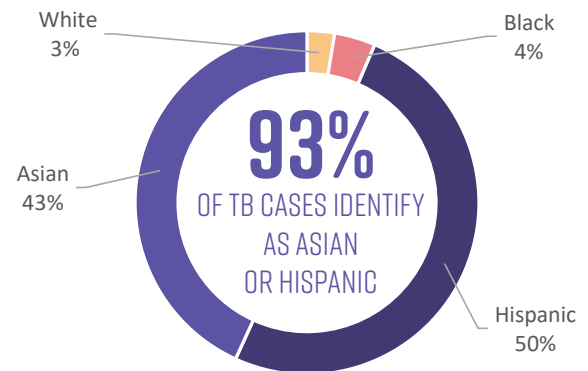


40% OF CASES ARE FEMALE AT BIRTH

36% INCREASE IN NUMBER OF TB CASES AMONG 15-24-YEAR-OLDS FROM 2023 TO 2024

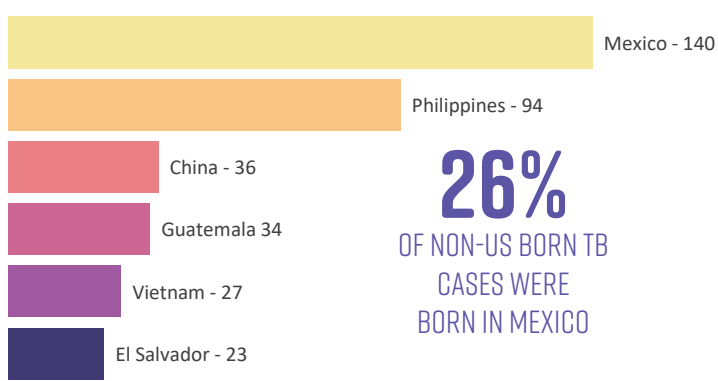


14% OF CASES WERE US BORN



THERE WERE NO TB CASES IN 2024 AMONG THE NATIVE HAWAIIAN/PACIFIC ISLANDER AND AMERICAN INDIAN/ALASKA NATIVE RACE/ETHNICITY GROUPS.

TOP 6 COUNTRIES OF BIRTH FOR TB CASES:



26% OF NON-US BORN TB CASES WERE BORN IN MEXICO

CHARACTERISTICS

- 14%** OF 2023 TB CASES DIED BEFORE COMPLETING TREATMENT (+0.0% VS. 2022)
- 18%** OF 2024 TB CASES (WITH DRUG SUSCEPTIBILITY TESTS) HAD FIRST-LINE DRUG* RESISTANCE (-4.8%)
- 34%** OF 2024 TB CASES HAD DIABETES (+1.1%)
- 6%** OF 2024 TB CASES EXPERIENCED HOMELESSNESS WITHIN 12 MONTHS BEFORE DIAGNOSIS (-0.4%)
- 5%** OF 2024 TB CASES WERE CO-INFECTED WITH HIV (-0.6%)

(PERCENT DIFFERENCES COMPARED TO 2023 UNLESS OTHERWISE NOTED)
*FIRST-LINE DRUGS: ISONIAZID, RIFAMPIN, ETHAMBUTOL, PYRAZINAMIDE

TUBERCULOSIS

in Los Angeles County 2024



TB CASE RATES BY HEALTH DISTRICT, 2024 (TOP 3 DISTRICTS WITH HIGHEST RATES HIGHLIGHTED)

SOUTHEAST

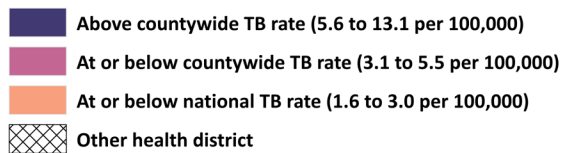
TB Rate per 100,000: 13.1
 2023 TB Mortality*: 16%
 Median Case Age (years): 40
 Case Demographics: 92% Hispanic, 4% Black, 4% Asian
 Health District Cities
 Neighborhoods: Historic South-Central, Florence, Central-Alameda

NORTHEAST

TB Rate per 100,000: 11.0
 2023 TB Mortality*: 17%
 Median Case Age (years): 54
 Case Demographics: 71% Hispanic, 26% Asian, 3% Black
 Health District Cities/
 Neighborhoods: Boyle Heights, Eagle Rock, Highland Park, Lincoln Heights, Mount Washington

ALHAMBRA

TB Rate per 100,000: 10.5
 2023 TB Mortality*: 16%
 Median Case Age (years): 66
 Case Demographics: 86% Asian, 14% Hispanic
 Health District Cities/Neighborhoods: Alhambra, San Gabriel, Monterey Park, Rosemead



*NUMBER OF TB CASES WHO DIED OF ANY CAUSE AMONG TB CASES. 2023 DATA SHOWN AS 2024 DATA ARE INCOMPLETE
 **PASADENA & LONG BEACH EXCLUDED AS THEY HAVE THEIR OWN HEALTH DEPARTMENTS

TB CONTROL PROGRAM HIGHLIGHTS, 2024

- » Provided 966 consultations on the diagnosis, treatment, & hospital discharges of possible & confirmed TB disease.
- » Provided TB testing & treatment incentives for patients: 3,731 grocery store cards, 5,789 meal coupons, 461 gas cards/bus passes, & 4,698 nights of housing.
- » Oversaw investigations of 2,283 priority contacts associated with 483 pulmonary TB cases.
- » Partnered with the State & the Long Beach Health Department to effectively respond to & contain a large TB outbreak, which was declared a public health emergency.
- » Provided community based outbreak TB testing to 553 individuals, finding & initiating treatment for 5 individuals with TB disease & 20 individuals for TB infection.
- » Helped secure sales tax funding (Measure H) to support housing for people experiencing homelessness to complete treatment for TB infection.

For more info on TB, please call 213-745-0800 or visit the QR code →

