

LA Care Health Plan  
Behavioral Health Services  
Coordination of Care with DPH-SAPC



**L.A. Care**  
HEALTH PLAN®

*For All of L.A.*

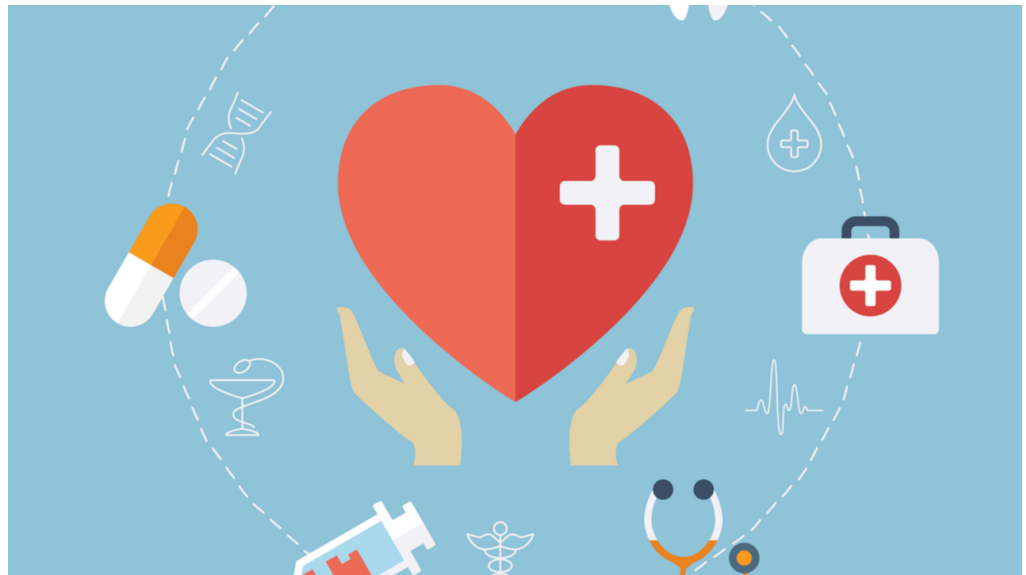
Frank Borunda, Licensed Behavioral Health  
Clinician  
June 8, 2021



**ELEVATING  
HEALTHCARE**  
IN LOS ANGELES COUNTY  
SINCE 1997

# What is a Managed Care Health Plan?

- Managed Care Health Plan (MCP): Managed Care Plans are systems of care organized to assist beneficiaries with choices of doctors, pharmacies, clinics and specialists.
- Two-Plan Model in L.A. County:
  1. L.A. Care Health Plan
    - Anthem
    - Blue Shield of California Promise
    - Kaiser
  2. Health Net
    - Molina



# Cal Mediconnect

- **5 Plans in L.A. County that provide coverage for members who are dual-eligible (Medi-Cal and Medicare)**
  - 1. L.A. Care
  - 2. Health Net
  - 3. Molina
  - 4. Anthem Blue Cross CMC
  - 5. Blue Shield of CA Promise



# Services Available—Medi-Cal



## Behavioral Health in Medi-Cal

**PPG/PCP**

**Target Population:** Children and adults in Managed Care Plans who meet medical necessity or EPSDT for Mental Health Services

**Outpatient Services by PCP**

- ✓ Routine Screening for Emotional Health and substance misuse
- ✓ Outpatient Medication and Monitoring for Mental Health Treatment and Medication Assisted Treatment (MAT) for Substance Use Disorders
- ✓ Brief Counseling/Support/Education
- ✓ Alcohol Misuse Screening and Counseling (AMSC) *formerly Screening, Brief Intervention and Referral to Treatment (SBIRT)\**
- ✓ Referral to Regional Centers for Comprehensive Diagnostic Evaluation
- ✓ Referrals for specialty services for children age 3 and older (SLP, OT, PT)

\* Indicates regulated service provided in primary care

- ✓ Behavioral Health eManagement on eConsult Platform

\* Available to solo providers with high panels

**LA Care/Beacon**  
877-344-2858  
FAX# 866-422-3413

**Target Population:** Children and adults in Managed Care Plans who meet medical necessity or EPSDT for Mental Health Services

**Outpatient Services**

- ✓ Individual/group mental health evaluation and treatment (Psychotherapy)
- ✓ Family Therapy
- ✓ Psychological testing when clinically indicated to evaluate a mental health condition
- ✓ Psychiatric consultation
- ✓ Outpatient services for the purposes of monitoring medication treatment
- ✓ Outpatient laboratory, supplies and supplements

**BH Treatment (ABA services)**  
888-347-2264  
FAX # 213-438-5054

- ✓ Behavioral Health Treatment (BHT) is available to members under age 21, with a recommendation from a licensed physician, surgeon or licensed psychologist. Autism/ASD diagnosis is no longer required

**LA County DMH**  
800-854-7771  
FAX# 562-863-3971

**Target Population:** Children and adults who meet medical necessity or EPSDT criteria for Medi-Cal Specialty Mental Health Services

**Outpatient Services**

- ✓ Mental Health Services (Assessments, Plan Development, Therapy, Rehabilitation & Collateral)
- ✓ Medication Support
- ✓ Day Treatment Services & Day Rehabilitation
- ✓ Crisis Intervention & Crisis Stabilization
- ✓ Targeted Case Management
- ✓ Therapeutic Behavior Services

**Residential Services**

- ✓ Adult Residential Treatment Services
- ✓ Crisis Residential Treatment Services

**Inpatient Services**

- ✓ Acute Psychiatric Inpatient Hospital Services
- ✓ Psychiatric Inpatient Hospital Professional Services
- ✓ Psychiatric Health Facility services

**LA County DPH-SAPC**  
844-804-7500

**Target Population:** Children and adults who meet medical necessity or EPSDT criteria for Drug Medi-Cal Substance Use Disorder Services

**Outpatient Services**

- ✓ Outpatient Drug Free
- ✓ Intensive Outpatient
- ✓ Narcotic Treatment Program
- ✓ Naltrexone

**Residential Services:** Expanded to all populations

**DHCS Local Field Office**  
866-644-6341

**Inpatient Services (Fee-For-Service)**

- ✓ Voluntary Inpatient Detoxification Services \*

\* Benefits expanded with NO restriction for physical medical necessity

Updated 11/20/2020

# The Importance of Care Coordination

- Both Behavioral Health and SAPC Team can work collaboratively in linking the member to specialty services
- Behavioral Health can be used as gateway to link member to other Health Plan teams:
  - Social Work
  - Medical Case Management
  - Health Education
  - IHSS or MLTSS Services
- Offer collaboration to bridge service gaps between DMH or Beacon
- Oversight for identified members to ensure they are linked to BH or SUD providers
- Relay any relevant information that may be affecting members ability to fully engage in treatment (i.e. non working or old numbers or addresses)
- Allows for constant evaluation of member needs and alternating interventions as needed



# Care Coordination & 42 C.F.R. Part 2

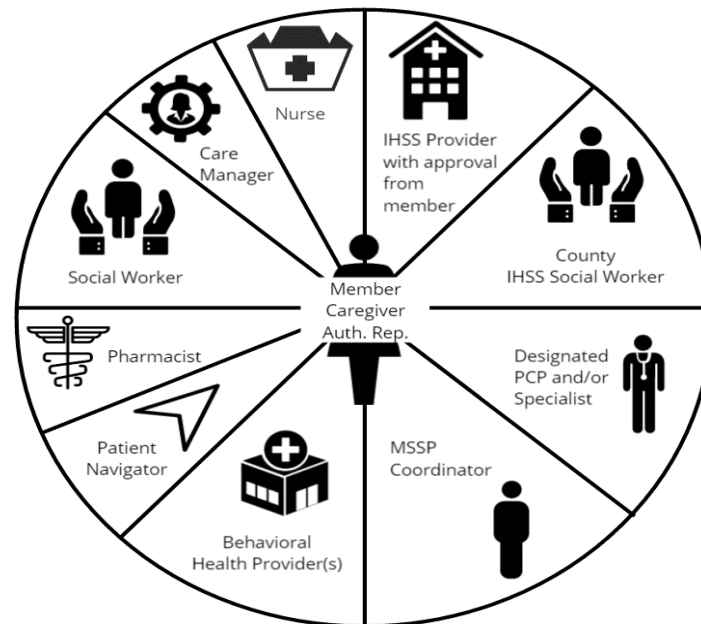
- **42 C.F.R. Part 2:** Generally requires a written consent from the member to exchange information between providers outside of a SAPC, Rehab, or SUD Provider
- Consent is key to open the door to coordination between health plan and SAPC
- Once consent is obtained to exchange information
  - Review current provider services in place
  - Exchange treatment goals
  - Link member to medical case management or other supportive programs
  - Plan for after care services once member leaves a facility
  - Provide quality, comprehensive & holistic care



# Ways that the Plan Coordinates

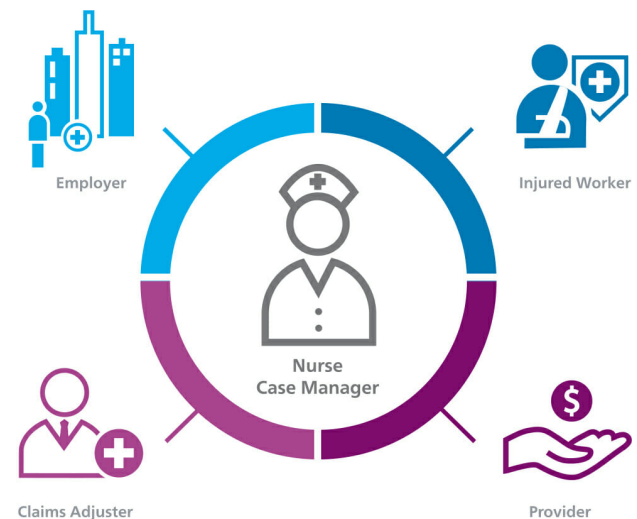
## Interdisciplinary Care Team Meetings (ICT)

- Conducted through Phone calls, encrypted emails and FAX
- Participation in clinical rounds with DMH, Beacon or other Managed Care Plans
- Exchange of Treatment Plans
- Sharing of change in health status updates (Inpatient, patient address or contact changes)



# Referring to Health Plan Case Management

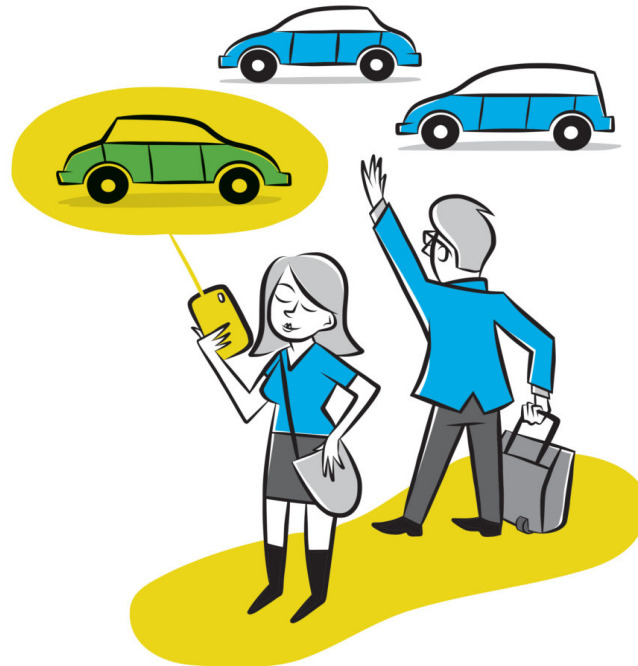
- LA CARE offers no cost Medical Case Management to assist our members who present with high complex medical needs
- Medical needs and advocacy by an RN for coordination with PCP, PPG and Specialty Providers
- Tracks, medical ER and Inpatient visits
- Works collaboratively with all other Health Pan teams including Behavioral Health
- For more Information or to submit a referral:
  - [Behavioralhealth@lacare.org](mailto:Behavioralhealth@lacare.org)
  - 1-844-858-9940





# Transportation Benefits

- Members are provided a no cost transportation to their medical or behavioral health related appointments
- Transportations request must be made within 48 hours of an upcoming appt.
- Members can request a return pick up time or simply, contact the transportation provider when they are ready to be picked up for their return ride
- **MCLA: 1-888-839-9909**
- **CMC: 1-888-522-1298**



# L.A. Care Behavioral Health Contacts

- Behavioral Health Clinical Team Support:
  - [Behavioralhealth@lacare.org](mailto:Behavioralhealth@lacare.org)
  - 1-844-858-9940
  
- Member Services
  - MCLA: 1-888-839-9909
  - CMC: 1-888-522-1298



**L.A. Care**  
HEALTH PLAN®



# Managed Care Plan in LA County

<u>Medi-Cal Only Beneficiaries</u>		
<u>Medi-Cal Managed Care Health Plan</u>	<u>BH Partner</u>	<u>Contact information</u>
Health Net	MHN	Fax: (855) 703-3268 Phone: (800) 675-6110
Health Net – Molina	Molina	Fax: (562) 499-6105 Phone: (888) 665-4621
LA Care	Beacon	Fax: (866) 422-3413 Phone: (877) 344-2858
LA Care – Anthem	Anthem	Fax: (855) 473-7902 Phone: Medi-CalBHUM@wellpoint.com Phone: (888) 831-2246
LA Care – BSC Promise	Beacon	Fax: (866) 422-3413 Phone: (855) 765-9701
AIDS Healthcare Foundation	Positive Health Care PHC	Fax: (888) 235-8552 Phone: (800) 263-0067



# Managed Care Plan in LA County

Cal <u>MediConnect</u> Beneficiaries		
CMC Health Plan	Non-specialty Behavioral Health Services Provider	Contact Information
Blue Shield of CA Promise	Beacon	Fax: (866) 422-3413 Phone: (855) 765-9701
Anthem Blue Cross CMC	Beacon	Fax: (866) 422-3413 Phone: (855) 371-8092
Health Net	MHN	Fax: (855) 703-3268 Email: MHN.CMC@MHN.com Phone: (855) 464-3571
LA Care	Beacon	Fax: (866) 422-3413 Phone: (877) 344-2858
Molina	Molina	Fax: (562) 499-6105 Phone: (855) 665-4627



