

Patient Flow: Youth (Age 12-17)

Point of Entry

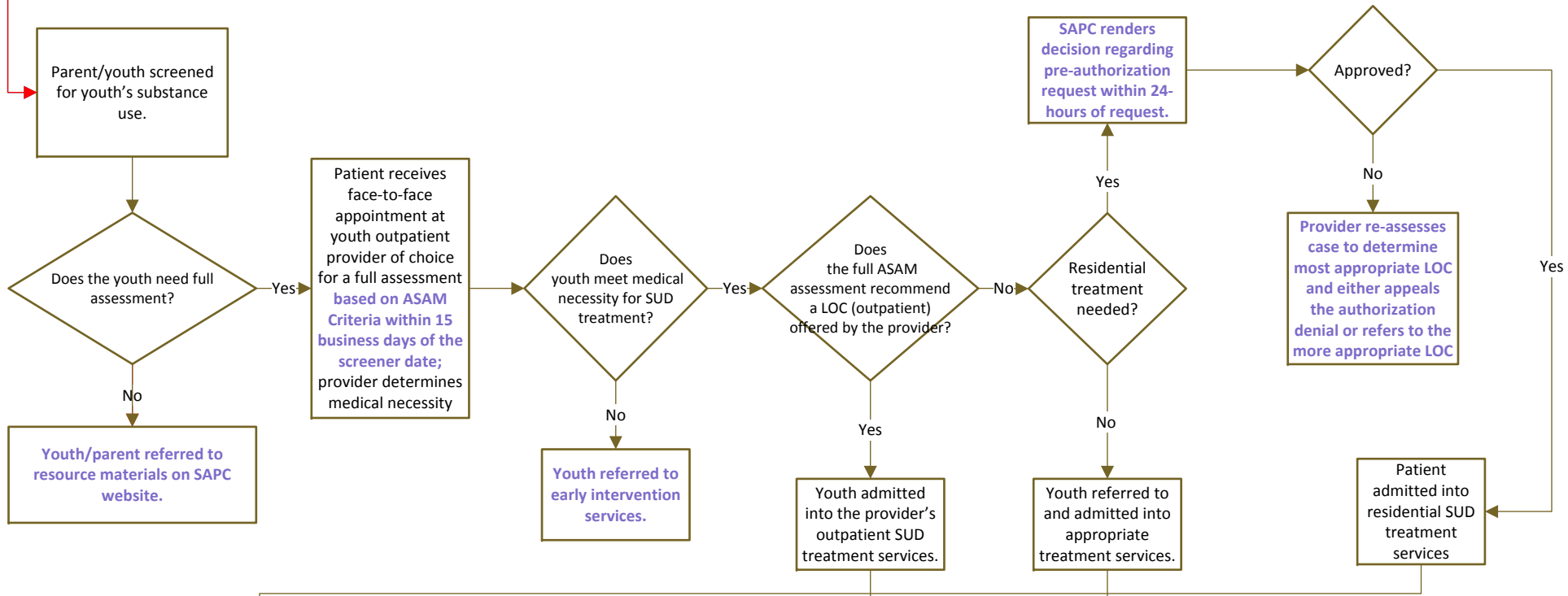
Parent/youth contacts treatment provider directly

Parent/youth or referral source contacts the Beneficiary Access Line

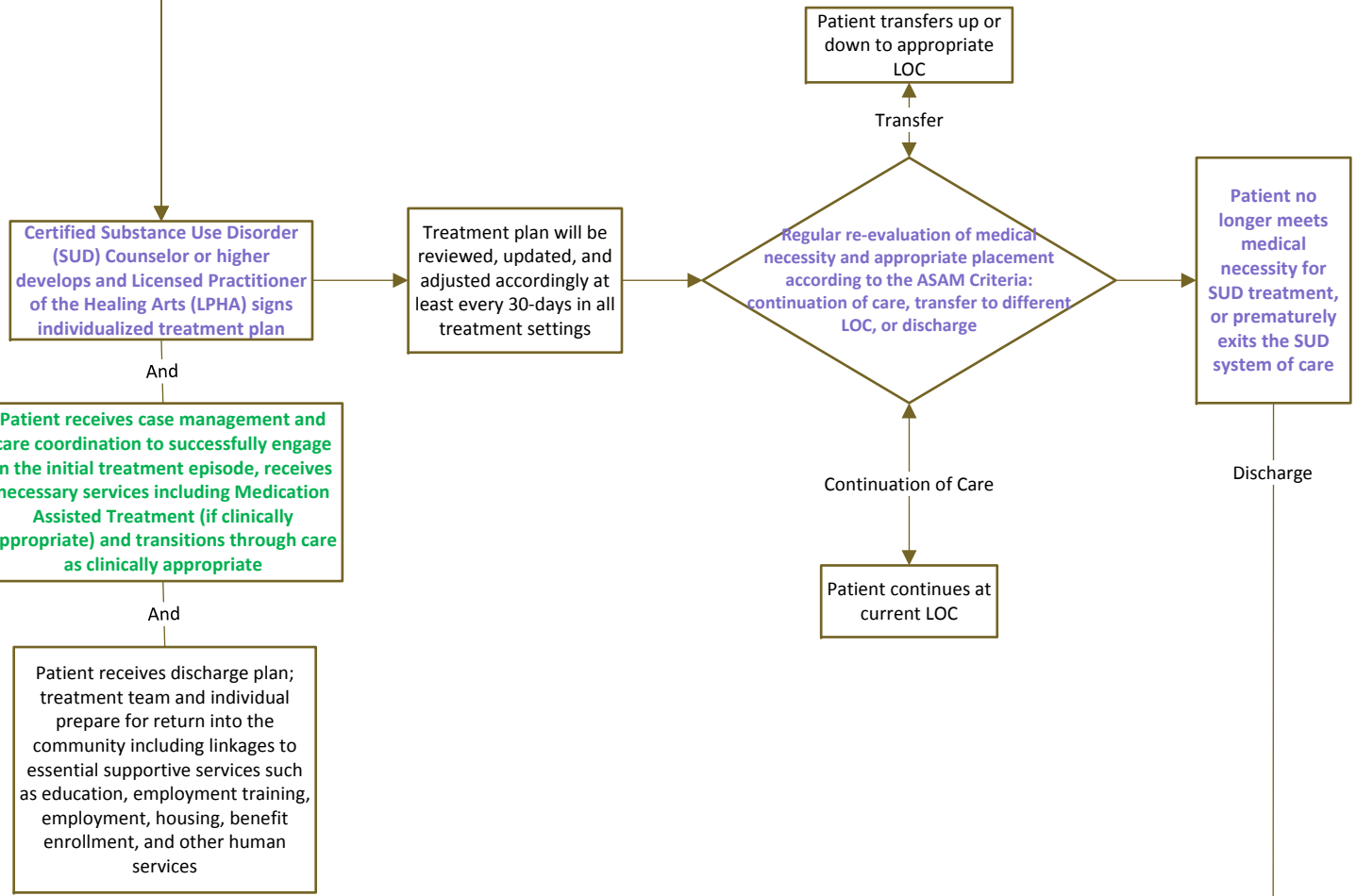
Key

- Red Track – Patient Self-Refers Into System of Care
- Blue Track – Beneficiary Access Line Refers Patient into System of Care
- Purple – New Drug Medi-Cal Organized Delivery System Process
- Green – Existing Service(s) Now Eligible for Reimbursement

Initial Placement Determination



Treatment Services



Case Management & Recovery Support Services

