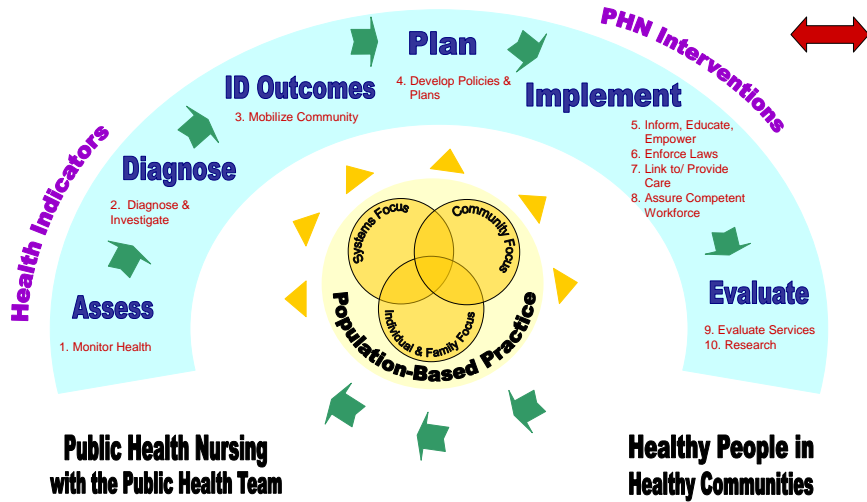


Nursing Process

Public Health Nursing Practice Model

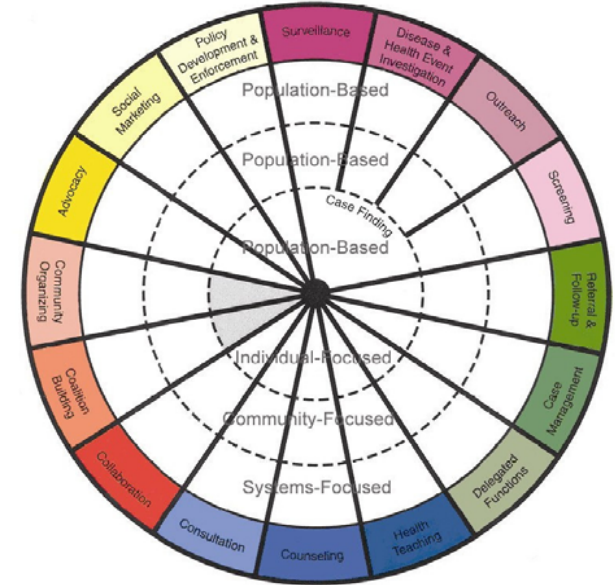


Further information:

- Public Health Nursing Practice Manual Section A
- Public Health Nursing's Public Site

Minnesota DHS PHN Section's Intervention Wheel

- Assess :** Data collection: Subjective Objective
Organize data
Validate data
Record data
Analyze data
- Diagnose:** Clinical judgment determined by data
Validity: Review and validate diagnosis
- ID Outcomes:** Establish goal
What would you like to see happen?
- Plan:** Intermediate objectives
Behavioral changes
- Implement:** Process objectives
Nursing actions using Minnesota Wheel
- Evaluate:** Ongoing process
Re-examine all steps



Further information:

- Minnesota Department of Health

Documentation

Located at <http://go.phd.ladhs.org> or in County of Los Angeles Public Health Programs and Community Health Services Nursing Procedures Manual

- Documentation - Policy # 390.1 (<http://go.phd.ladhs.org>)
- Late Entry - Policy # 211 (Manual)
- Charting S.O.A.P. - Policy # 201 (Manual)
- Abbreviation - Policy # 109
- Prohibited abbreviations - Policy # 341

S.O.A.P Charting

- S: Subjective Data**
Information provided by client, family or community worker.
- O: Objective Data**
Data obtained through observation, e.g. vital signs.
- A: Assessment**
Statement of diagnosis.
- P: Plan**
Plan for treatment, education, or referrals.

Sample Charting

- S:** 22y/o male c/o cough, SOB, hemoptysis.
- O:** Pt. Lives with family, B/P: 156/90. See H-513 of 10/20/03 exam.
- A:** Pt receptive to PHN visit and verbalized understanding of DOT Regime, TB class #, Smear positive.
- P:** Pt. educated on TB disease, transmission and prevention with emphasis on covering mouth with coughing. Patient reminded to wear mask at doctor appointments. Referral faxed to TBC for housing and food vouchers.