

**TITLE V INDICATOR TEMPLATES**

**INDICATOR:** Infant mortality

**DEFINITION:** The number of infant deaths occurring at less than 365 days of age per 1,000 live births

**NUMERATOR:** The number of infant deaths occurring at less than 365 days of age, by place of residence, in a calendar year

**DENOMINATOR:** The total number of live births, by place of residence, in a calendar year

**HEALTHY PEOPLE 2000 OBJECTIVE:**

Reduce the infant mortality rate to no more than 7 per 1,000 live births. (Baseline: 10.1 per 1,000 live births in 1987) (Objective 14.1)  
No more than 7 infant deaths per 1,000 live births

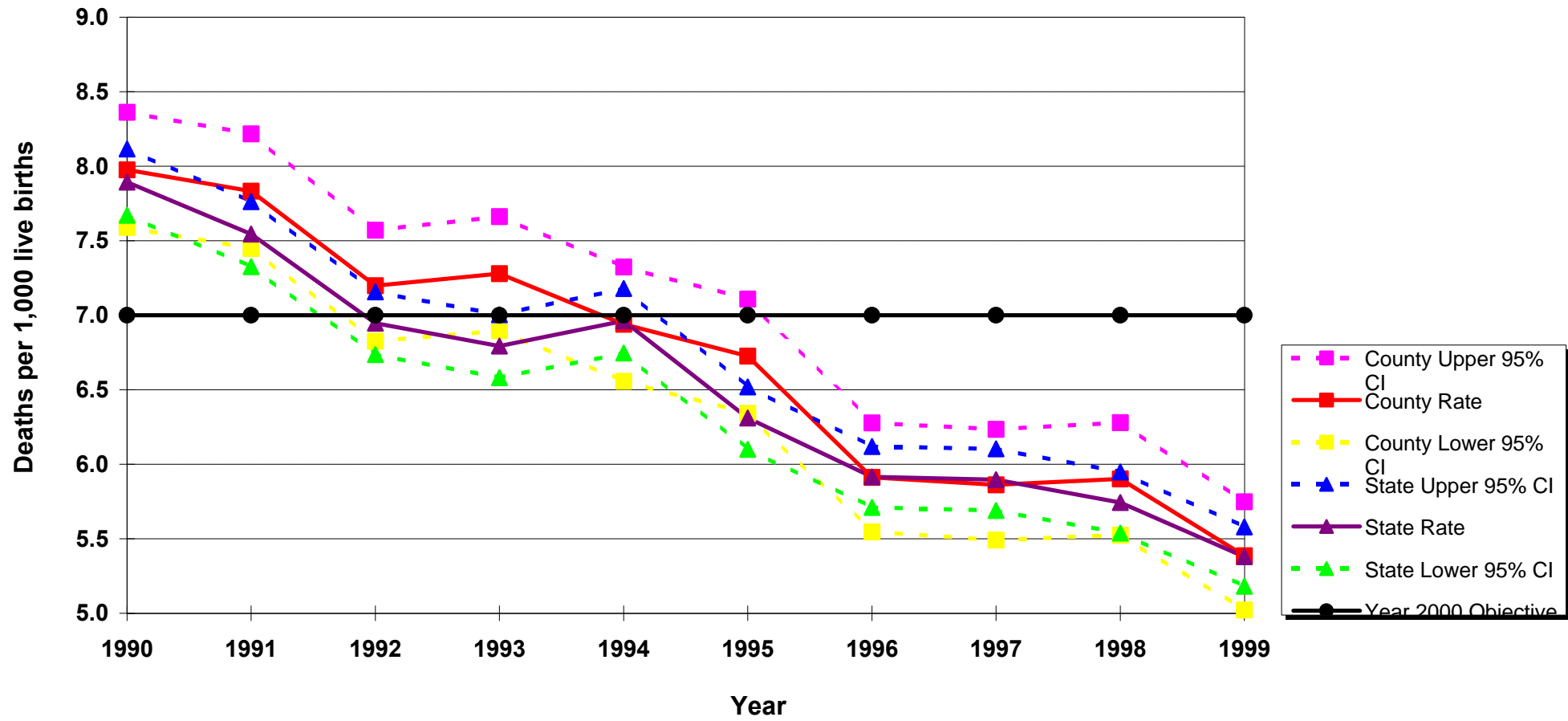
**RISK FACTORS:** Race/ethnicity; prematurity/disorders related to short gestation; low birth weight; congenital anomalies; young maternal age; low maternal education level; maternal tobacco use; maternal alcohol or substance use/abuse; poor maternal nutrition; inadequate prenatal care; unintended pregnancy; maternal psychosocial problems; maternal medical complications/ chronic illness during pregnancy (including diabetes); pregnancy complications; short interpregnancy interval; injury (including domestic violence); infection; respiratory distress syndrome; family history of SIDS

Year	California				LA County			
	Infant Mortality		95% Confidence Interval		Infant Mortality		95% Confidence Interval	
	Number	Rate	Lower	Upper	Number	Rate	Lower	Upper
1990	4,828	7.9	7.7	8.1	1,628	8.0	7.6	8.4
1991	4,596	7.5	7.3	7.8	1,588	7.8	7.4	8.2
1992	4,174	6.9	6.7	7.2	1,421	7.2	6.8	7.6
1993	3,970	6.8	6.6	7.0	1,381	7.3	6.9	7.7
1994	3,948	7.0	6.7	7.2	1,252	6.9	6.6	7.3
1995	3,478	6.3	6.1	6.5	1,176	6.7	6.3	7.1
1996	3,186	5.9	5.7	6.1	999	5.9	5.5	6.3
1997	3,091	5.9	5.7	6.1	950	5.9	5.5	6.2
1998	2,994	5.7	5.5	5.9	936	5.9	5.5	6.3
1999	2,787	5.4	5.2	5.6	841	5.4	5.0	5.7

DENOMINATOR: Live Births	
California	LA County
611,666	204,124
609,228	202,737
600,838	197,415
584,483	189,706
567,034	180,394
551,226	174,862
538,628	168,973
524,174	162,036
521,265	158,604
518,073	156,153

Source: 1990-1999 birth and death records from California Department of Health Services, Center for Health Statistics

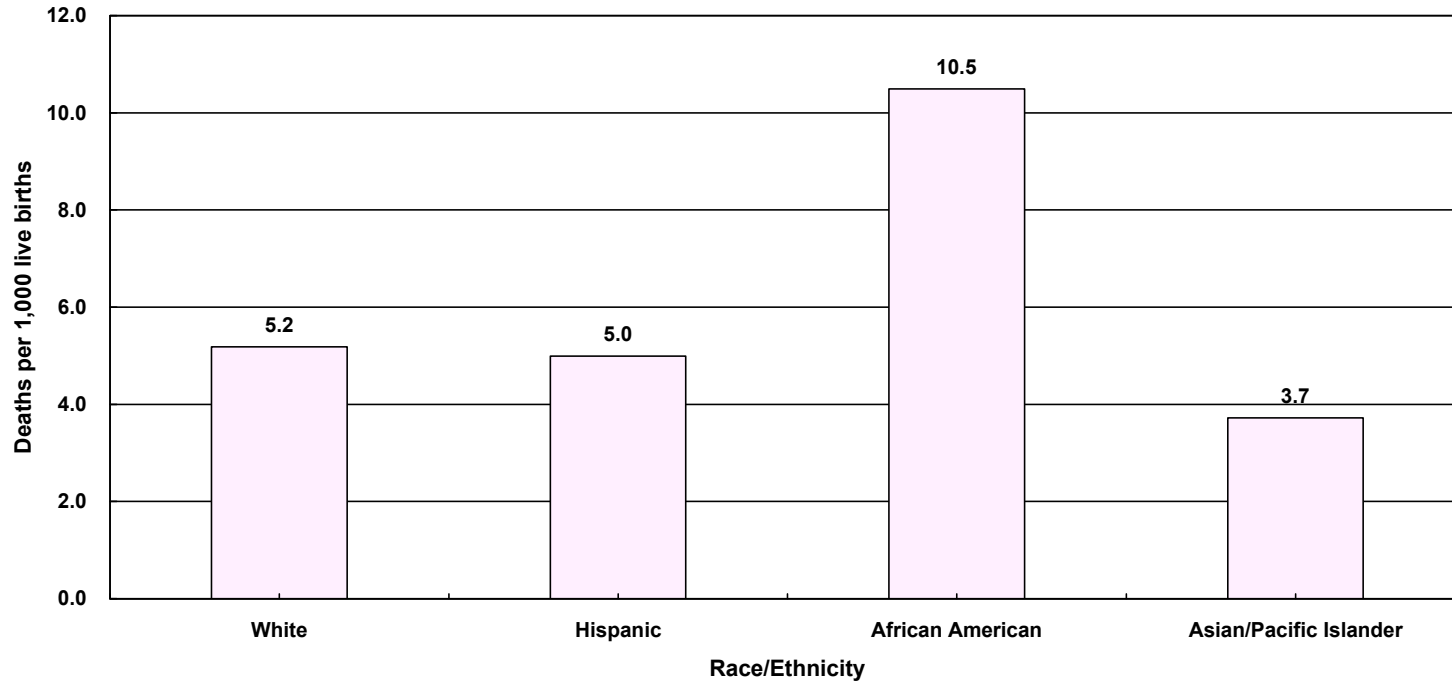
## Infant Deaths per 1,000 Live Births California vs. Los Angeles County, 1990 - 1999



**Year 2000 Objective:** Reduce the infant mortality rate to no more than 7 per 1,000 live births.

**Source:** 1990-1999 birth and death records from California Department of Health Services, Center for Health Statistics

### Infant Mortality Rate by Race/Ethnicity\* Los Angeles County, 1999



Los Angeles County, 1999				
Race/Ethnicity	Infant Mortality		95% Confidence Interval	
	Number	Rate	Lower	Upper
White	153	5.2	4.4	6.0
Hispanic	485	5.0	4.6	5.4
African American	144	10.5	8.8	12.2
Asian/Pacific Islander	56	3.7	2.7	4.7
Native American	2	nc	nc	nc
Other/Unknown	1	nc	nc	nc
<b>Total</b>	<b>841</b>	<b>5.4</b>	<b>5.0</b>	<b>5.7</b>

Total Live Births
29,514
97,103
13,724
15,050
270
492
<b>156,153</b>

\* White, African American, Native American and other races exclude Hispanic ethnicity  
 Hispanic includes any race category  
 nc Rates are not calculated if fewer than five deaths.

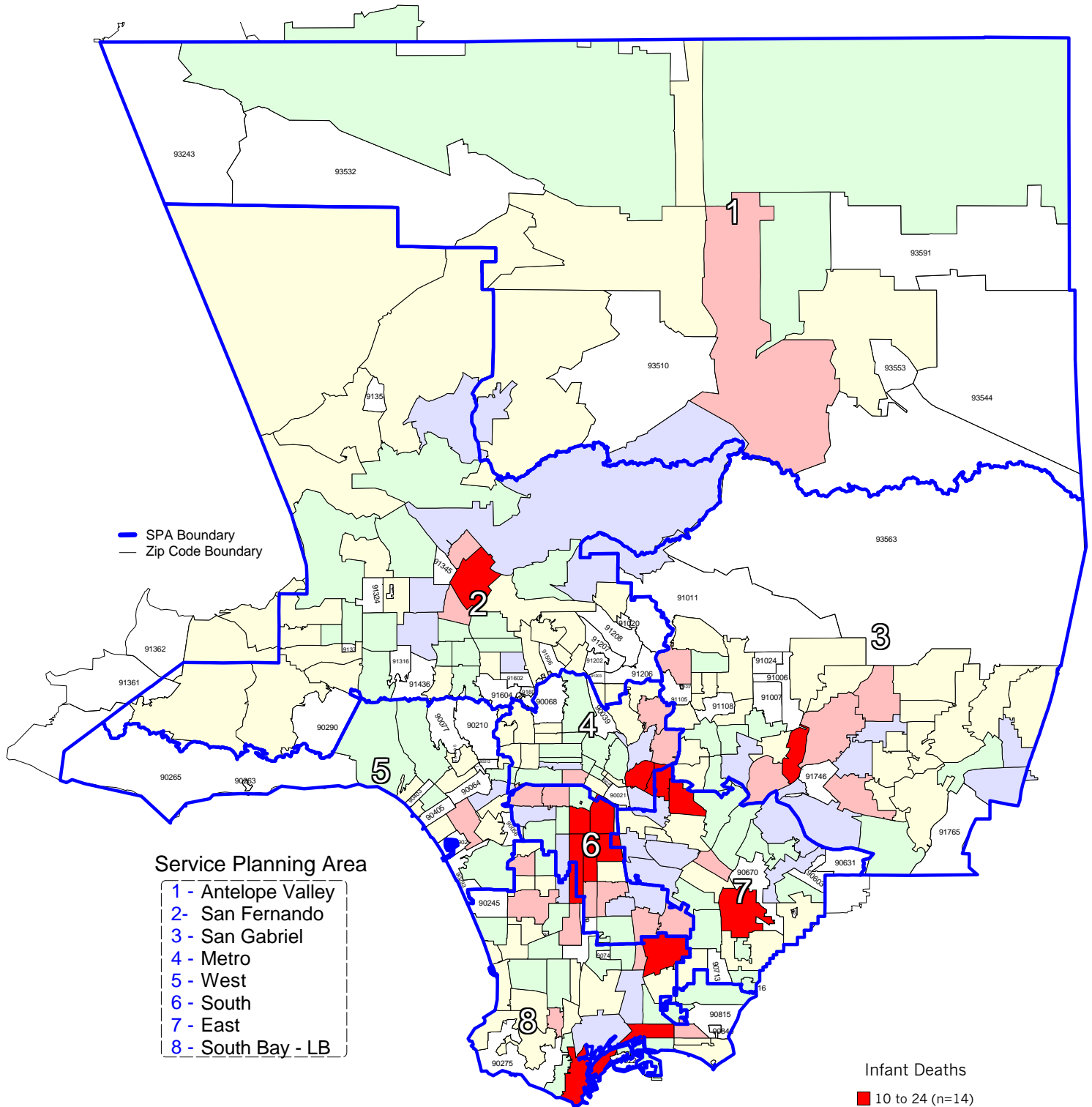
**Year 2000 Objective:** Reduce the infant mortality rate to no more than 7 per 1,000 live births.

**Note:** Infant mortality rate is defined as deaths occurring less than 365 days per 1,000 live births

**Source:** 1999 birth and death records from the California Department of Health Services, Center for Health Statistics

# Number of Infant Deaths by Zip Code\* and Service Planning Area (SPA)

Los Angeles County, 1999



\*Los Angeles County zip code boundaries as of April 1999.

Total number of live births in Los Angeles County, 1999 = 156,153  
 Total number of infant deaths in Los Angeles County, 1999 = 841

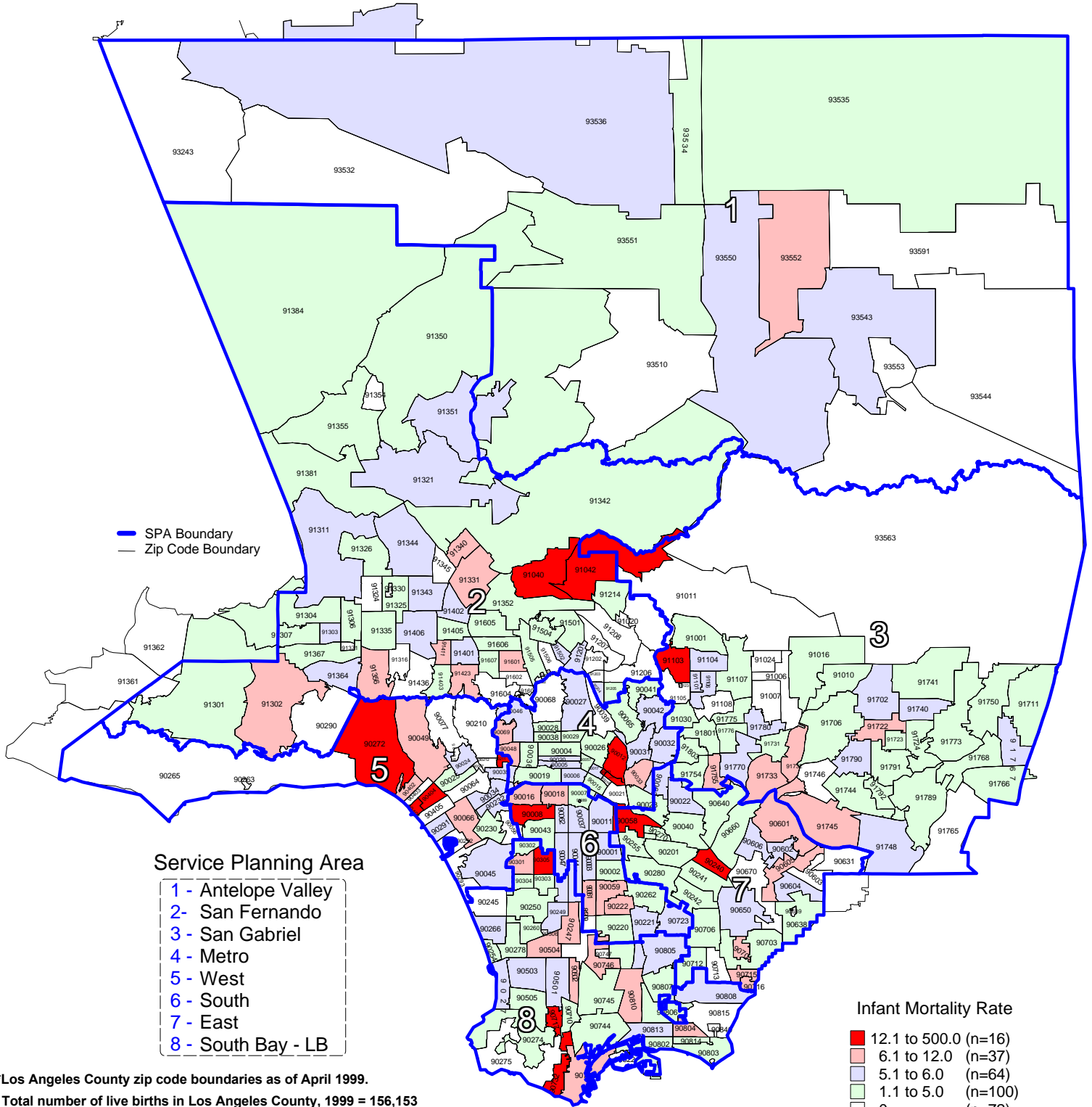
Note: Infant death is defined as death occurring at less than 365 days of age.

Source: 1999 birth records from California Department of Health Services, Center for Health Statistics

n = total number of zip codes in range

# Infant Mortality Rate by Zip Code\* and Service Planning Area (SPA)

Los Angeles County, 1999



\*Los Angeles County zip code boundaries as of April 1999.

Total number of live births in Los Angeles County, 1999 = 156,153  
 Total number of infant deaths in Los Angeles County, 1999 = 841

Note: Infant mortality rate is defined as deaths occurring in less 365 days per 1,000 live births

Source: 1999 birth and death records from California Department of Health Services, Center for Health Statistics

n = total number of zip codes in range

\*\*Year 2000 Objective: Reduce the infant mortality rate to no more than 7 per 1,000 live births.

**TITLE V INDICATOR TEMPLATES**

**INDICATOR: Neonatal mortality**

**DEFINITION:** The number of infant deaths per 1,000 live births occurring at less than 28 days of age

**NUMERATOR:** The number of infant deaths occurring at less than 28 days of age, by place of residence, in a calendar year

**DENOMINATOR:** The total number of live births, by place of residence, in a calendar year

**HEALTHY PEOPLE 2000 OBJECTIVE:**

Reduce the neonatal mortality rate to no more than 4.5 per 1,000 live births.  
(Baseline: 6.5 in 1987) (Objective 14.1d)

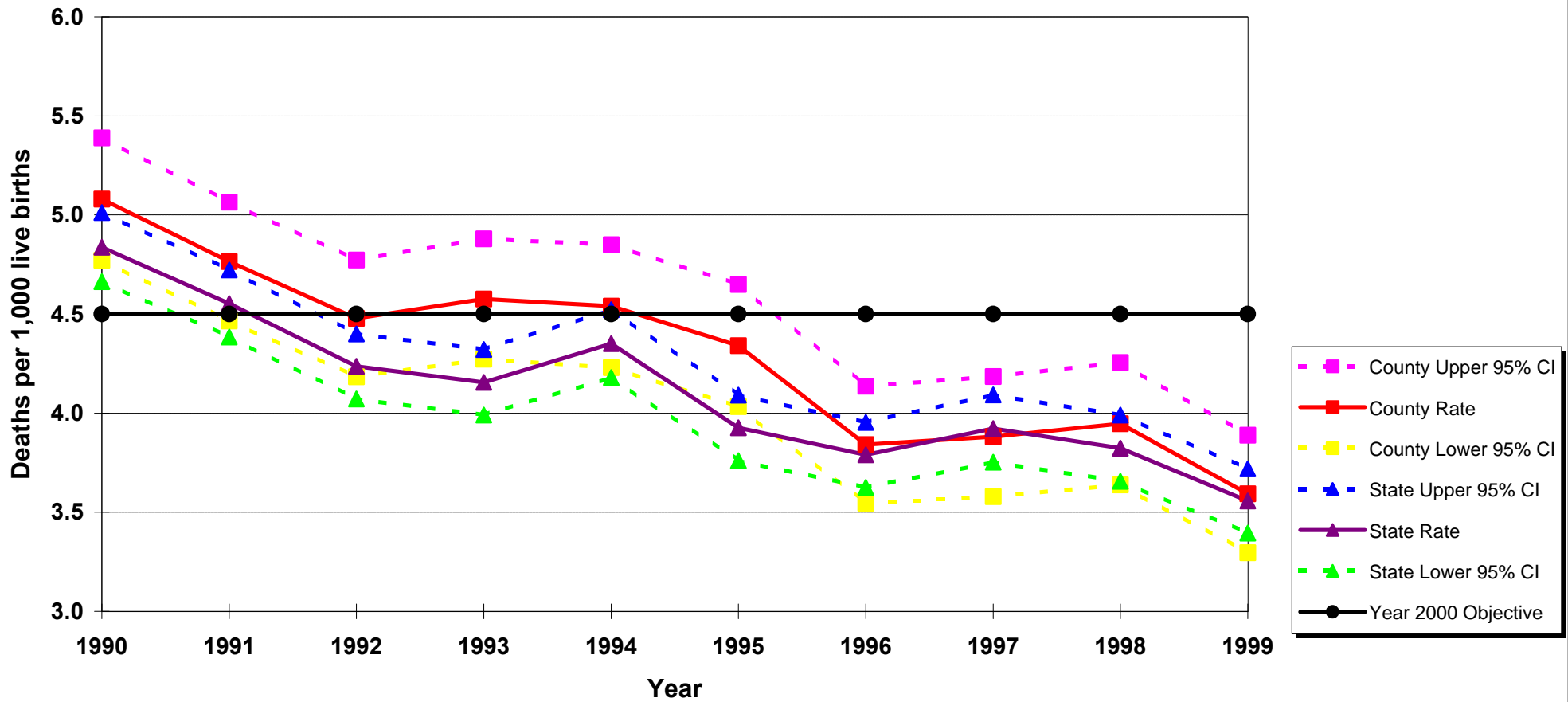
**RISK FACTORS:** Congenital anomalies; respiratory distress syndrome; short gestation; low birthweight; maternal complications; race/ethnicity (African American, Puerto Rican)

See also risk factors for infant mortality.

Year	California				LA County				DENOMINATOR: Live Births	
	Neonatal Mortality		95% Confidence Interval		Neonatal Mortality		95% Confidence Interval		California	LA County
	Number	Rate	Lower	Upper	Number	Rate	Lower	Upper		
1990	2,959	4.8	4.7	5.0	1,037	5.1	4.8	5.4	611,666	204,124
1991	2,774	4.6	4.4	4.7	966	4.8	4.5	5.1	609,228	202,737
1992	2,545	4.2	4.1	4.4	884	4.5	4.2	4.8	600,838	197,415
1993	2,429	4.2	4.0	4.3	868	4.6	4.3	4.9	584,483	189,706
1994	2,467	4.4	4.2	4.5	819	4.5	4.2	4.9	567,034	180,394
1995	2,164	3.9	3.8	4.1	759	4.3	4.0	4.6	551,226	174,862
1996	2,041	3.8	3.6	4.0	649	3.8	3.5	4.1	538,628	168,973
1997	2,056	3.9	3.8	4.1	629	3.9	3.6	4.2	524,174	162,036
1998	1,993	3.8	3.7	4.0	626	3.9	3.6	4.3	521,265	158,604
1999	1,843	3.6	3.4	3.7	561	3.6	3.3	3.9	518,073	156,153

Source: 1990-1999 birth and death records from California Department of Health Services, Center for Health Statistics

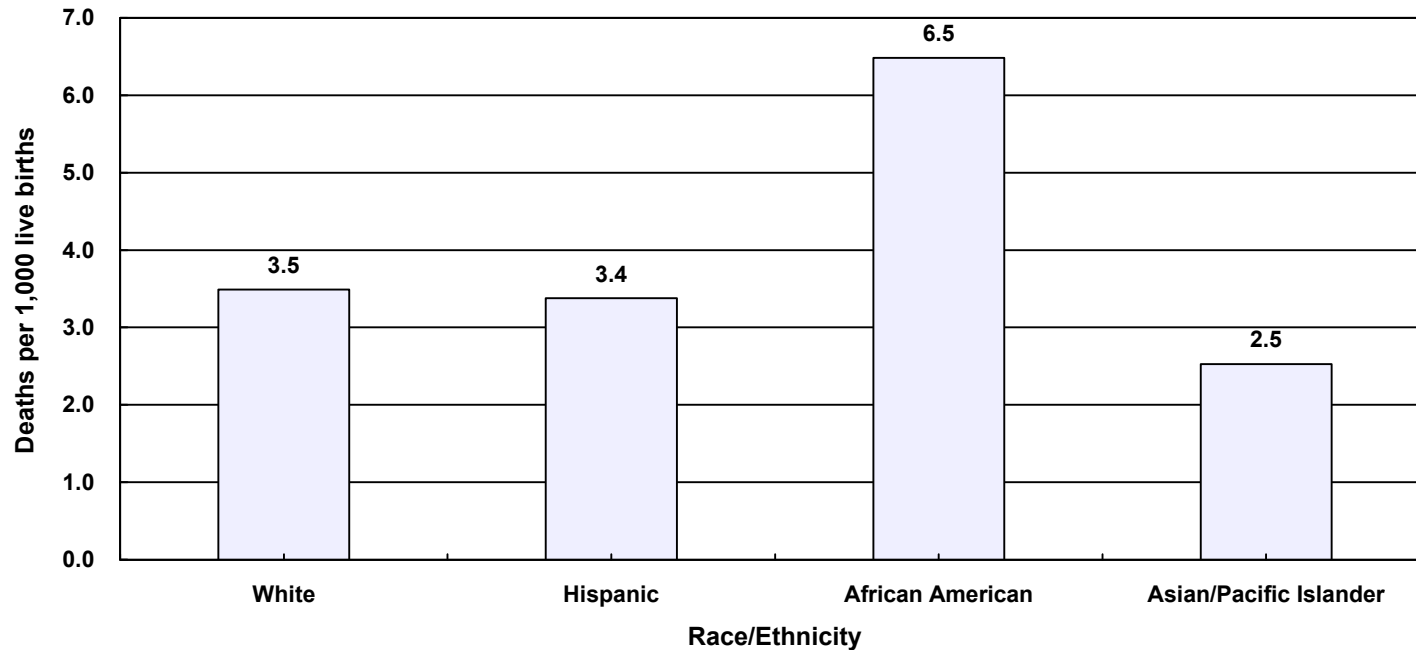
## Neonatal Deaths per 1,000 Live Births California vs. Los Angeles County, 1990 - 1999



**Year 2000 Objective:** Reduce the neonatal mortality rate to no more than 4.5 per 1,000 live births.

**Source:** 1990-1999 birth and death records from California Department of Health Services, Center for Health Statistics

## Neonatal Mortality Rate by Race/Ethnicity\* Los Angeles County, 1999



Race/Ethnicity	Los Angeles County, 1999			
	Infant Mortality		95 % Confidence Interval	
	Number	Rate	Lower	Upper
White	103	3.5	2.8	4.2
Hispanic	328	3.4	3.0	3.7
African American	89	6.5	5.1	7.8
Asian/Pacific Islander	38	2.5	1.7	3.3
Native American	2	nc	nc	nc
Other/Unknown	1	nc	nc	nc
<b>Total</b>	<b>561</b>	<b>3.6</b>	<b>3.3</b>	<b>3.9</b>

Total Live Births
29,514
97,103
13,724
15,050
270
492
<b>156,153</b>

\* White, African American, Asian, Native American and other races exclude Hispanic ethnicity.  
Hispanic includes any race category  
Filipino is included in Asian  
nc Rates are not calculated if fewer than five deaths.

**Year 2000 Objective:** Reduce the neonatal mortality rate to no more than 4.5 per 1,000 live births.

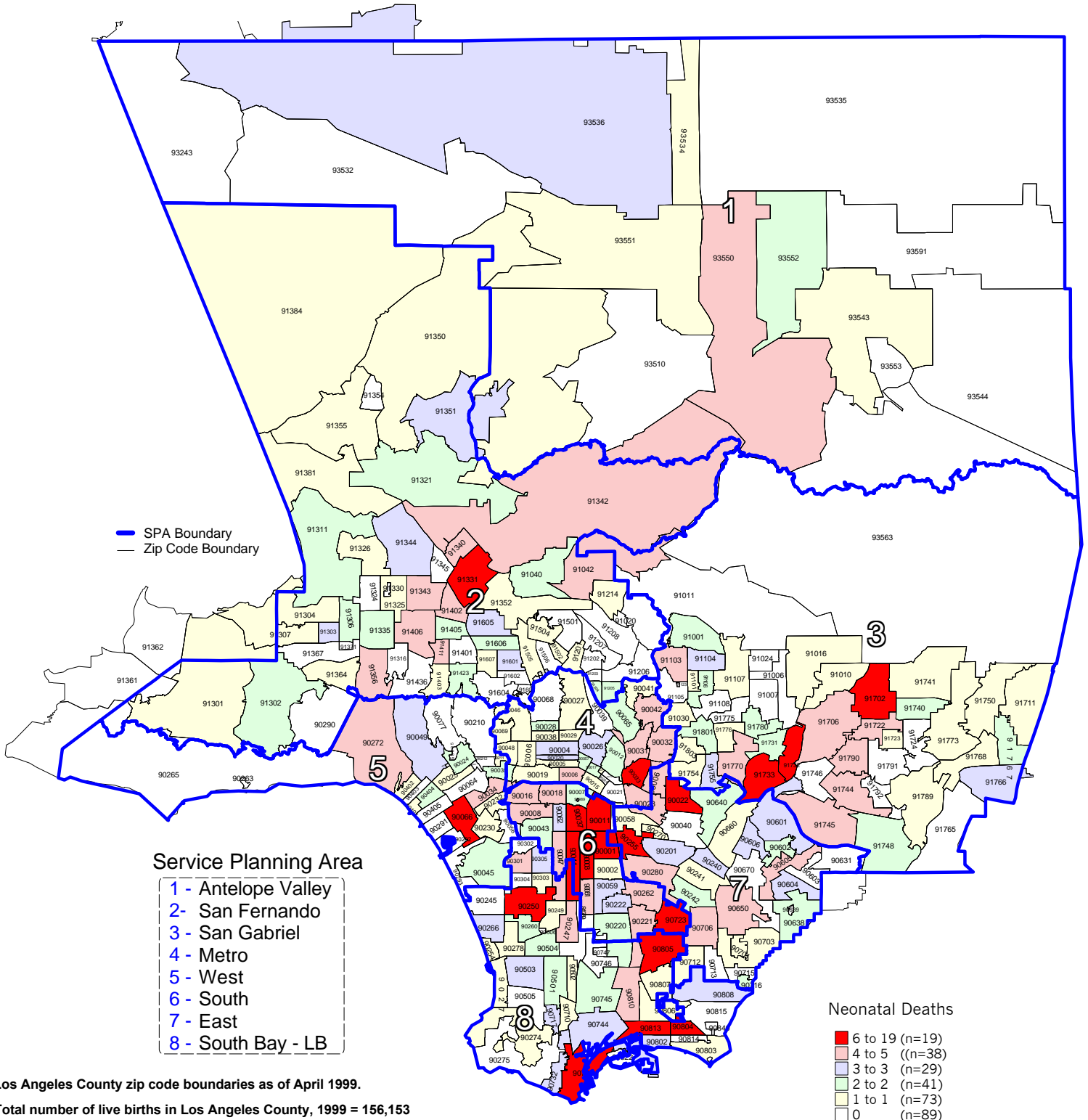
**Note:** Neonatal mortality rate is defined as deaths less than 28 days per 1,000 live births

**Source:** 1999 birth and death records from the California Department of Health Services, Center for Health Statistics



# Number of Neonatal Deaths by Zip Code\* and Service Planning Area (SPA)

Los Angeles County, 1999



\*Los Angeles County zip code boundaries as of April 1999.

Total number of live births in Los Angeles County, 1999 = 156,153  
 Total number of Neonatal deaths in Los Angeles County, 1999 = 561

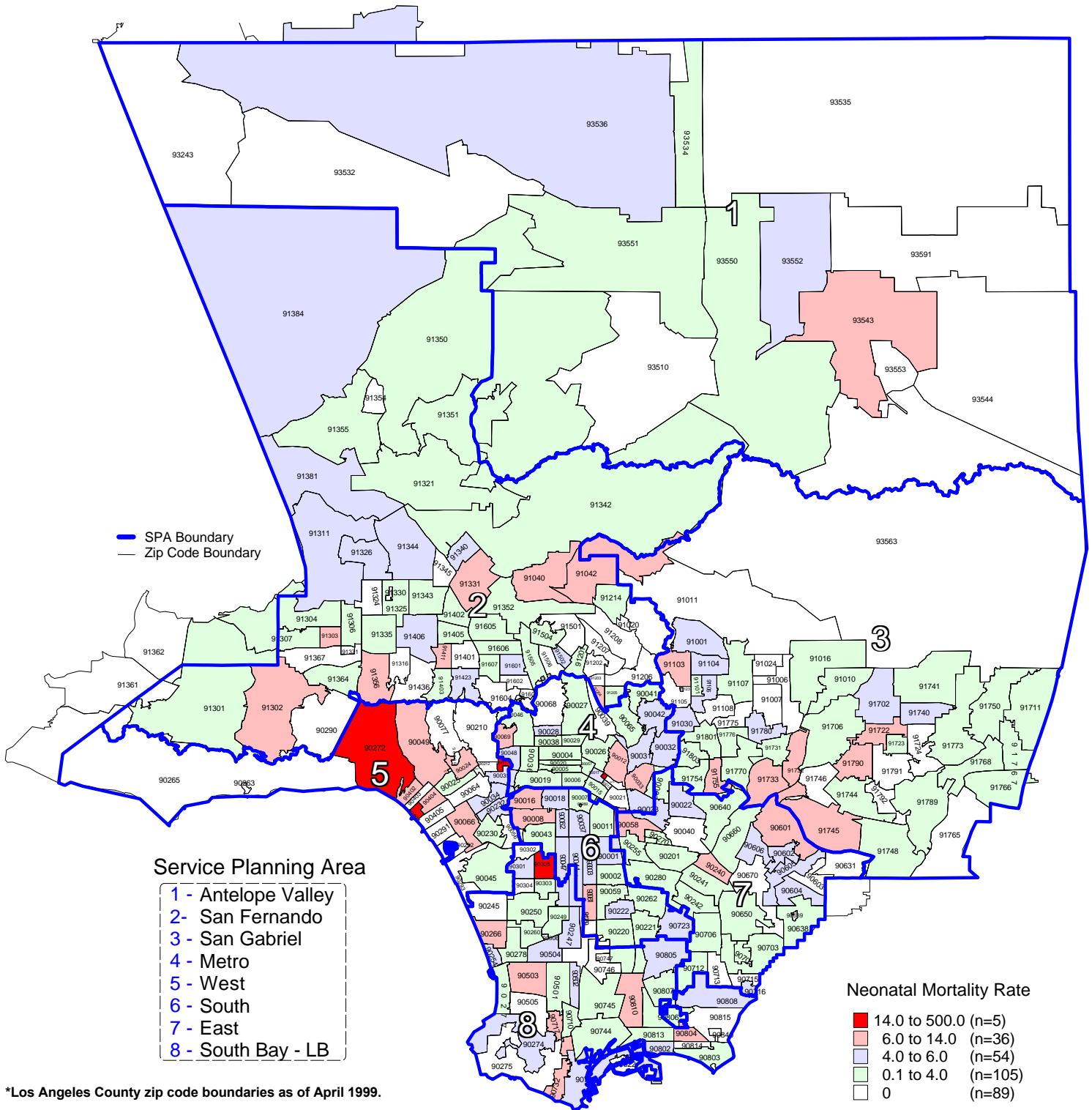
Note: Neonatal deaths are defined as deaths occurring less than 28 days per 1,000 live births.

Source: 1999 birth records from California Department of Health Services, Center for Health Statistics

n = total number of zip codes in range

# Neonatal Mortality Rate by Zip Code\* and Service Planning Area (SPA)

Los Angeles County, 1999



\*Los Angeles County zip code boundaries as of April 1999.

Total number of live births in Los Angeles County, 1999 = 156,153  
Total number of Neonatal deaths in Los Angeles County, 1999 = 561

Note: Neonatal mortality rate is defined as deaths occurring less than 28 days per 1,000 live births.

Source: 1999 birth records from California Department of Health Services, Center for Health Statistics

n = total number of zip codes in range

Year 2000 Objective: Reduce the neonatal mortality rate to no more than 4.5 per 1,000 live births.

**TITLE V INDICATOR TEMPLATES**

**INDICATOR:** Post-neonatal mortality

**DEFINITION:** The number of infant deaths per 1,000 live births occurring between 28 and 364 days of age

**NUMERATOR:** The number of infant deaths occurring at age 28 to 364 days of age, by place of residence, in a calendar year

**DENOMINATOR:** The total number of live births, by place of residence, in a calendar year

**HEALTHY PEOPLE 2000 OBJECTIVE:**  
Reduce the post-neonatal mortality rate to no more than 2.5 per 1,000 live births. (Baseline: 3.6 in 1987) (Objective 14.1g)

**RISK FACTORS:** Congenital anomalies; injuries; infection in late pregnancy; family history of SIDS; maternal smoking or drug use; young maternal age (teen births); race/ethnicity (African American, American Indian, Puerto Rican)

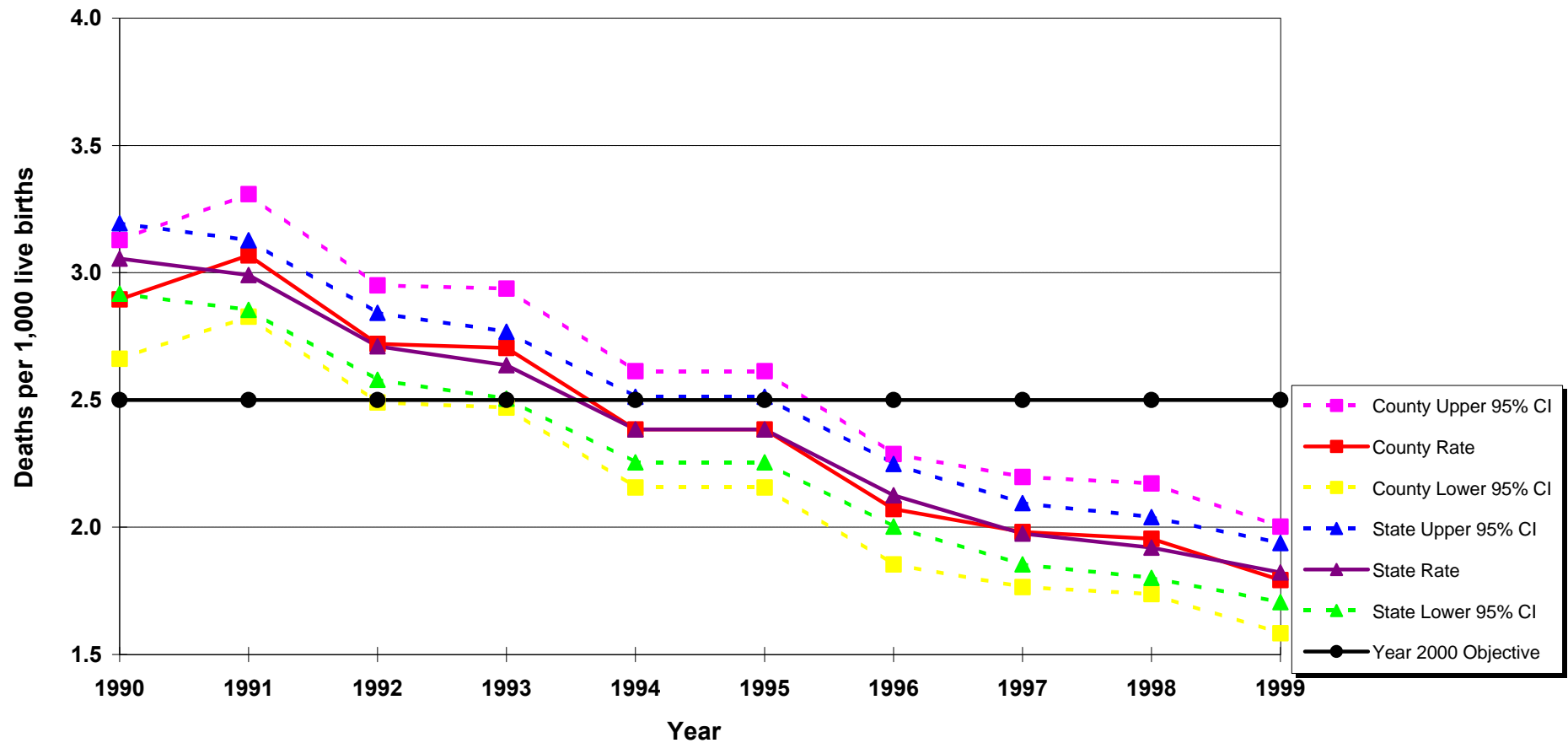
See also risk factors for infant mortality.

Year	California				LA County			
	Post-Neonatal Mortality		95% Confidence Interval		Post-Neonatal Mortality		95% Confidence Interval	
	Number	Rate	Lower	Upper	Number	Rate	Lower	Upper
1990	1,869	3.1	2.9	3.2	591	2.9	2.7	3.1
1991	1,822	3.0	2.9	3.1	622	3.1	2.8	3.3
1992	1,629	2.7	2.6	2.8	537	2.7	2.5	2.9
1993	1,541	2.6	2.5	2.8	513	2.7	2.5	2.9
1994	1,481	2.6	2.5	2.7	433	2.4	2.2	2.6
1995	1,314	2.4	2.3	2.5	417	2.4	2.2	2.6
1996	1,145	2.1	2.0	2.2	350	2.1	1.9	2.3
1997	1,035	2.0	1.9	2.1	321	2.0	1.8	2.2
1998	1,001	1.9	1.8	2.0	310	2.0	1.7	2.2
1999	944	1.8	1.7	1.9	280	1.8	1.6	2.0

DENOMINATOR: Live Births	
California	LA County
611,666	204,124
609,228	202,737
600,838	197,415
584,483	189,706
567,034	180,394
551,226	174,862
538,628	168,973
524,174	162,036
521,265	158,604
518,073	156,153

Source: 1990-1999 birth and death records from California Department of Health Services, Center for Health Statistics

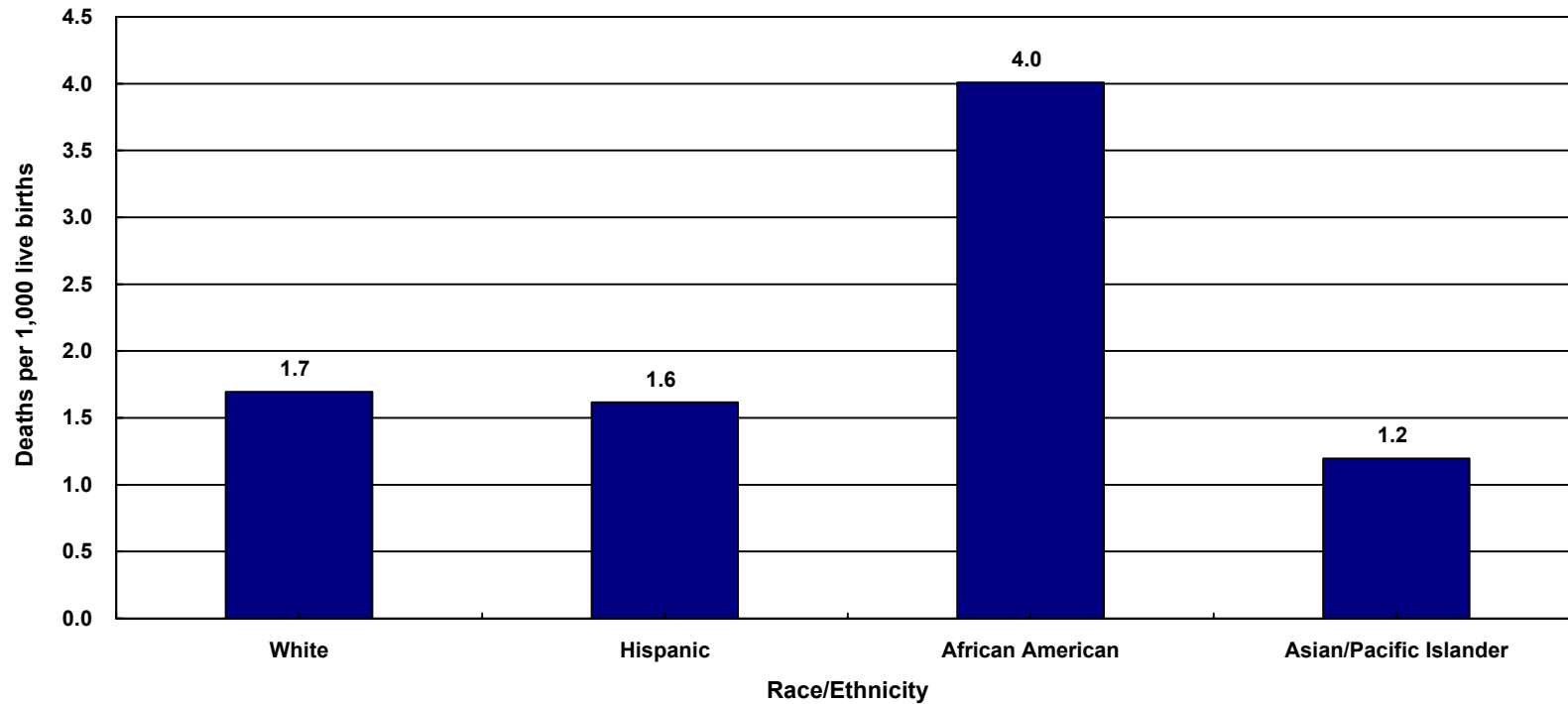
## Post-Neonatal Deaths per 1,000 Live Births California vs. Los Angeles County, 1990 - 1999



**Year 2000 Objective:** Reduce the neonatal mortality rate to no more than 2.5 per 1,000 live births.

**Source:** 1990-1999 birth and death records from California Department of Health Services, Center for Health Statistics

**Post-Neonatal Mortality Rate by Race/Ethnicity\***  
**Los Angeles County, 1999**



Los Angeles County, 1999				
Race/Ethnicity	Post-neonatal Mortality		95 % Confidence Interval	
	Number	Rate	Lower	Upper
White	50	1.7	1.2	2.2
Hispanic	157	1.6	1.4	1.9
African American	55	4.0	3.0	5.1
Asian/Pacific Islander	18	1.2	0.6	1.7
Native American	0	nc	nc	nc
Other/Unknown	0	nc	nc	nc
<b>Total</b>	<b>280</b>	<b>1.8</b>	<b>1.6</b>	<b>2.0</b>

Total Live Births
29,514
97,103
13,724
15,050
270
492
<b>156,153</b>

\* White, African American, Asian, Native American and other race exclude Hispanic ethnicity  
 Hispanic includes any race category  
 Filipino is included in Asian  
 nc Rates are not calculated if fewer than five deaths.

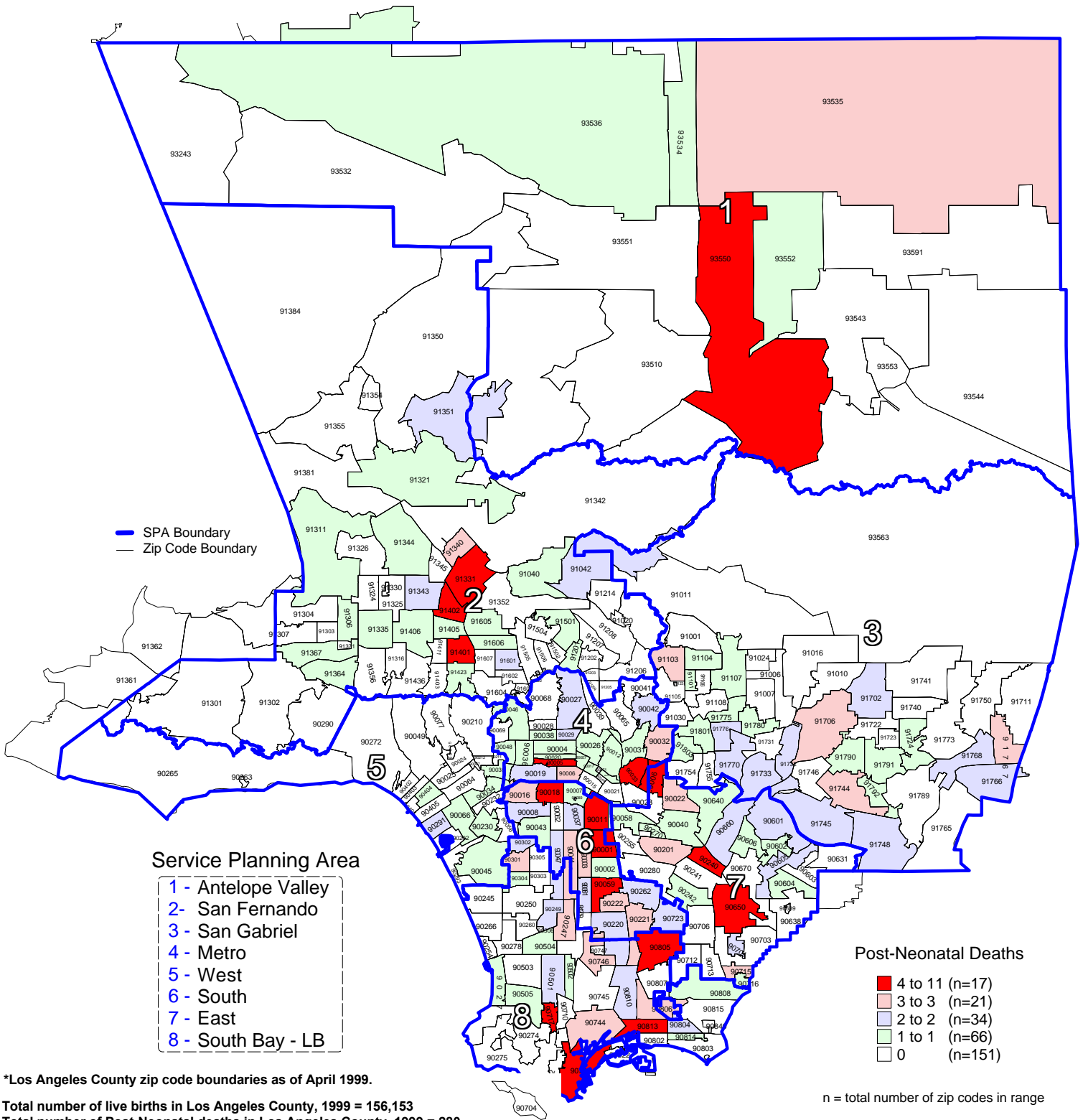
**Year 2000 Objective:** Reduce the post-neonatal mortality rate to no more than 2.5 per 1,000 live births.

**Note:** Post-neonatal mortality rate is defined as deaths occurring between ages 28 and 364 days per 1,000 live births

**Source:** 1999 birth and death records from the California Department of Health Services, Center for Health Statistics

# Number of Post-Neonatal Deaths by Zip Code\* and Service Planning Area (SPA)

Los Angeles County, 1999



\*Los Angeles County zip code boundaries as of April 1999.

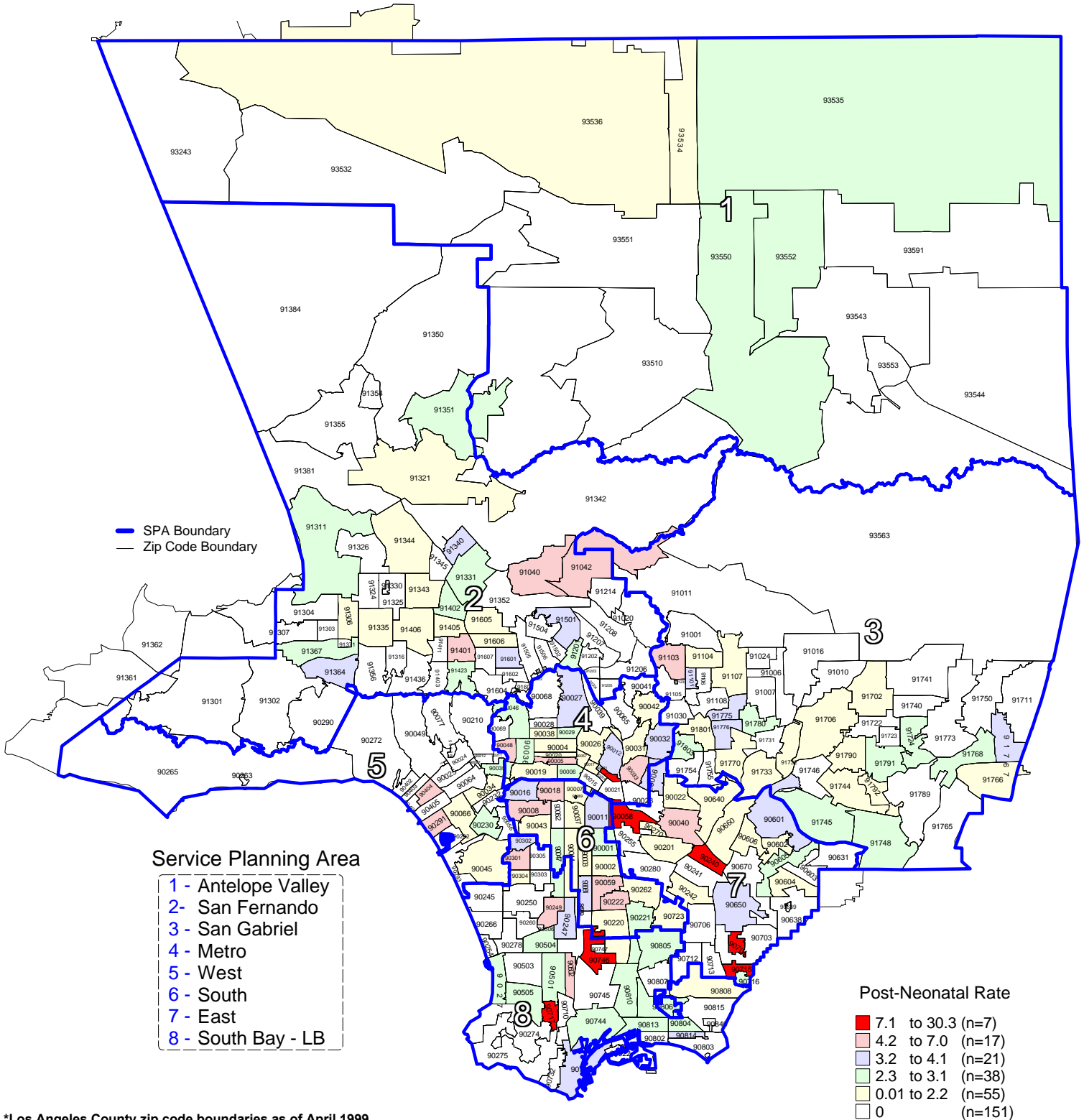
Total number of live births in Los Angeles County, 1999 = 156,153  
 Total number of Post-Neonatal deaths in Los Angeles County, 1999 = 280

**Note:** Post-Neonatal mortality rate is defined as deaths occurring between ages 28 and 364 days per 1,000 live births

**Source:** 1999 birth records from California Department of Health Services, Center for Health Statistics

# Post-Neonatal Mortality Rate by Zip Code\* and Service Planning Area (SPA)

Los Angeles County, 1999



\*Los Angeles County zip code boundaries as of April 1999.

Total number of live births in Los Angeles County, 1999 = 156,153  
Total number of Post-Neonatal deaths in Los Angeles County, 1999 = 280

Note: Post-Neonatal mortality rate is defined as deaths occurring between ages 28 and 364 days per 1,000 live births

Source: 1999 birth records from California Department of Health Services, Center for Health Statistics

n = total number of zip codes in range

Year 2000 Objective: Reduce the post-neonatal mortality rate to no more than 2.5 per 1,000 live births.