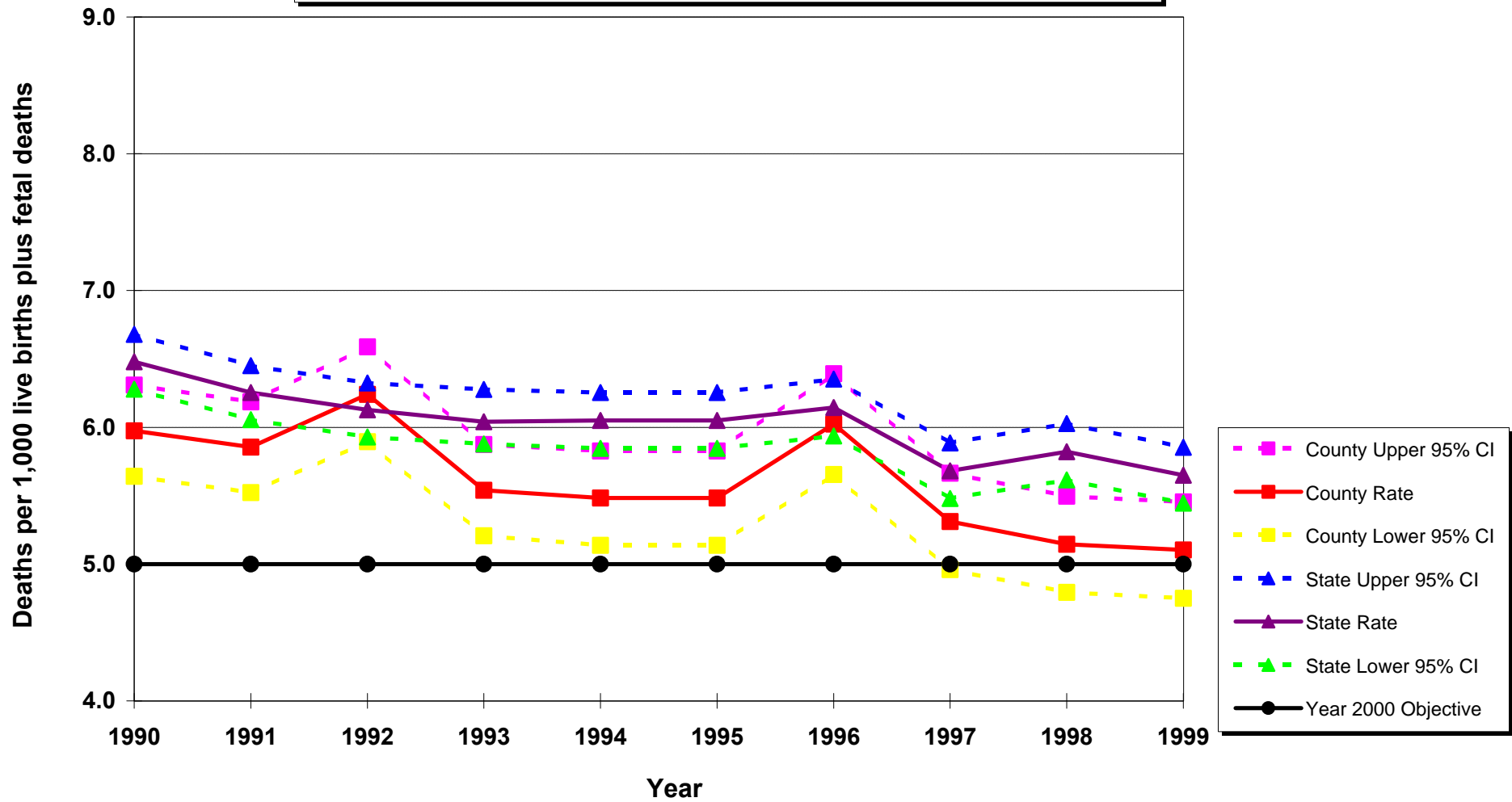


Fetal Deaths per 1,000 Live Births plus Fetal Deaths California vs. Los Angeles County, 1990 - 1999



Year 2000 Objective: Reduce the fetal death rate (20 or more weeks of gestation) to no more than 5 per 1,000 live births plus fetal deaths.

Source: 1990-1999 birth and fetal death records from California Department of Health Services, Center for Health Statistics