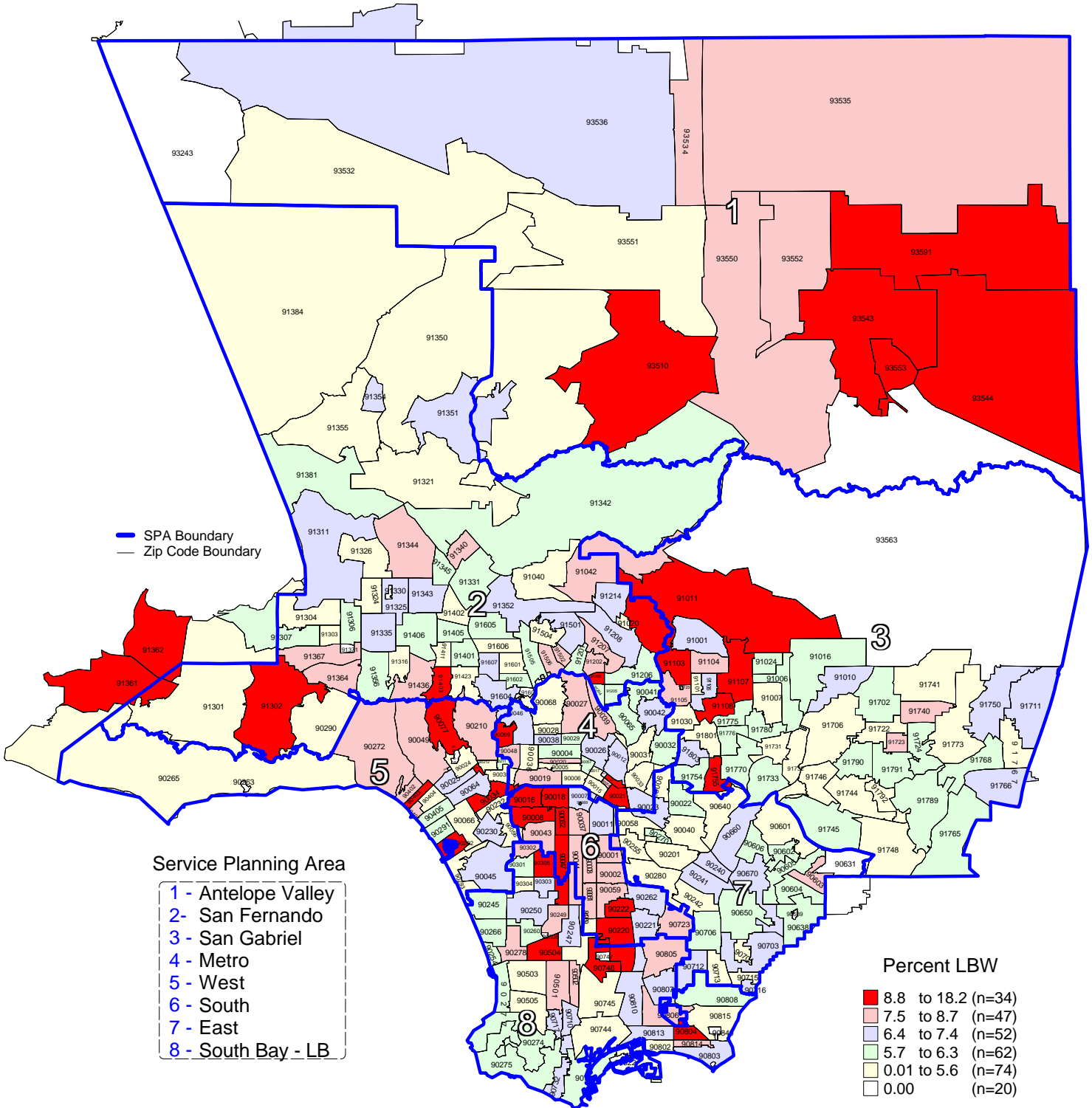


Percent of Low Birthweight (LBW) Live Births by Zip Code* and Service Planning Area (SPA)

Los Angeles County, 1999



*Los Angeles County zip code boundaries as of April 1999.

Total number of live births in Los Angeles County, 1999 = 156,153

Note: Low birthweight is defined as weight less than 2,500 grams at birth.

Source: 1998 birth records from California Department of Health Services, Center for Health Statistics



** Year 2000

Objective: Reduce low birthweight to an incidence of no more than 5 percent of live births.

n = total number of zip codes in range