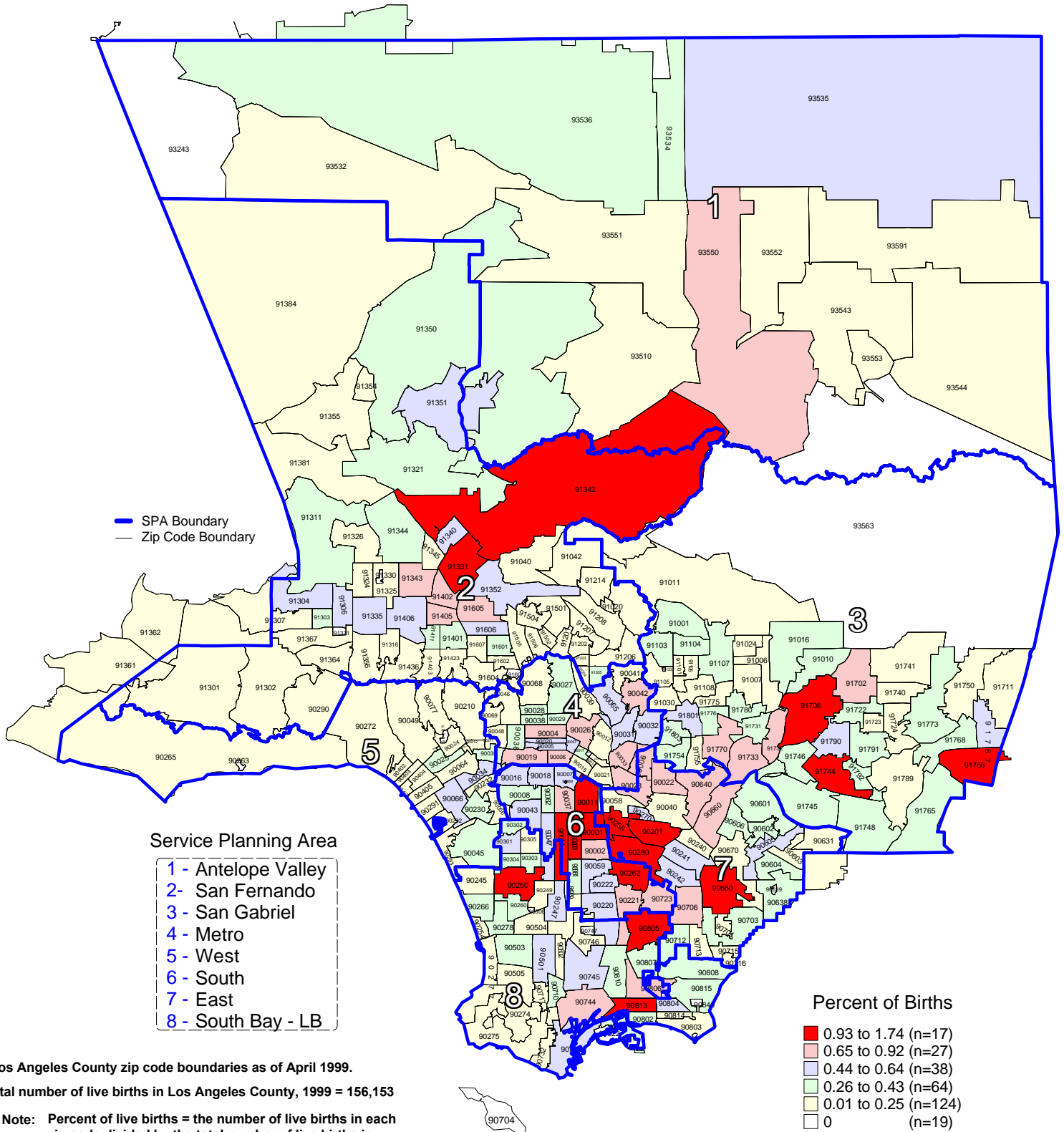


# Percent of Total Live Births by Zip Code\* and Service Planning Area (SPA)

Los Angeles County, 1999



\*Los Angeles County zip code boundaries as of April 1999.

Total number of live births in Los Angeles County, 1999 = 156,153

Note: Percent of live births = the number of live births in each zip code divided by the total number of live births in Los Angeles County multiplying by 100

Source: 1999 birth records from California Department of Health Services, Center for Health Statistics

n = total number of zip codes in range