

INFANT MORTALITY

TITLE V INDICATOR TEMPLATES

INDICATOR: Infant mortality

DEFINITION: The number of infant deaths occurring at less than 365 days of age per 1,000 live births

NUMERATOR: The number of infant deaths occurring at less than 365 days of age, by place of residence, in a calendar year

DENOMINATOR: The total number of live births, by place of residence, in a calendar year

HEALTHY PEOPLE 2010 OBJECTIVE:

Reduce the infant mortality rate to no more than 4.5 per 1,000 live births. (Baseline: 7.2 per 1,000 live births in 1998) (Objective 16-1c)
No more than 4.5 infant deaths per 1,000 live births

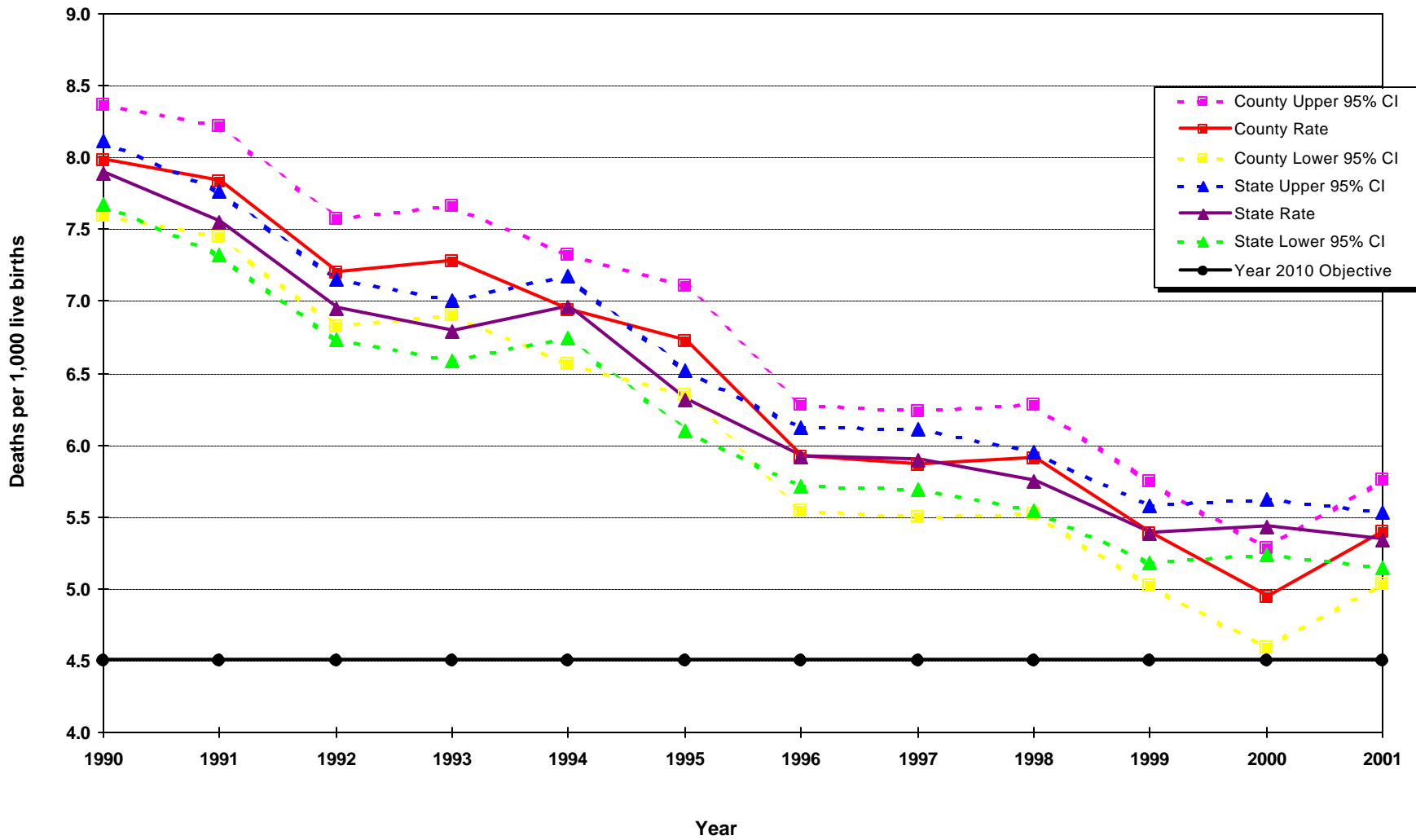
RISK FACTORS: Race/ethnicity; prematurity/disorders related to short gestation; low birth weight; congenital anomalies; young maternal age; low maternal education level; maternal tobacco use; maternal alcohol or substance use/abuse; poor maternal nutrition; inadequate prenatal care; unintended pregnancy; maternal psychosocial problems; maternal medical complications/ chronic illness during pregnancy (including diabetes); pregnancy complications; short interpregnancy interval; injury (including domestic violence); infection; respiratory distress syndrome; family history of SIDS

Year	California				LA County			
	Infant Mortality		95% Confidence Interval		Infant Mortality		95% Confidence Interval	
	Number	Rate	Lower	Upper	Number	Rate	Lower	Upper
1990	4,828	7.9	7.7	8.1	1,628	8.0	7.6	8.4
1991	4,596	7.5	7.3	7.8	1,588	7.8	7.4	8.2
1992	4,174	6.9	6.7	7.2	1,421	7.2	6.8	7.6
1993	3,970	6.8	6.6	7.0	1,381	7.3	6.9	7.7
1994	3,948	7.0	6.7	7.2	1,252	6.9	6.6	7.3
1995	3,478	6.3	6.1	6.5	1,176	6.7	6.3	7.1
1996	3,186	5.9	5.7	6.1	999	5.9	5.5	6.3
1997	3,091	5.9	5.7	6.1	950	5.9	5.5	6.2
1998	2,994	5.7	5.5	5.9	936	5.9	5.5	6.3
1999	2,787	5.4	5.2	5.6	841	5.4	5.0	5.7
2000	2,884	5.4	5.2	5.6	777	4.9	4.6	5.3
2001	2,815	5.3	5.1	5.5	828	5.4	5.0	5.8

DENOMINATOR: Live Births	
California	LA County
611,666	204,124
609,228	202,737
600,838	197,415
584,483	189,706
567,034	180,394
551,226	174,862
538,628	168,973
524,174	162,036
521,265	158,604
518,073	156,153
531,285	157,391
527,371	153,523

Source: California Department of Health Services, Center for Health Statistics, Vital Statistics, 1990-2001

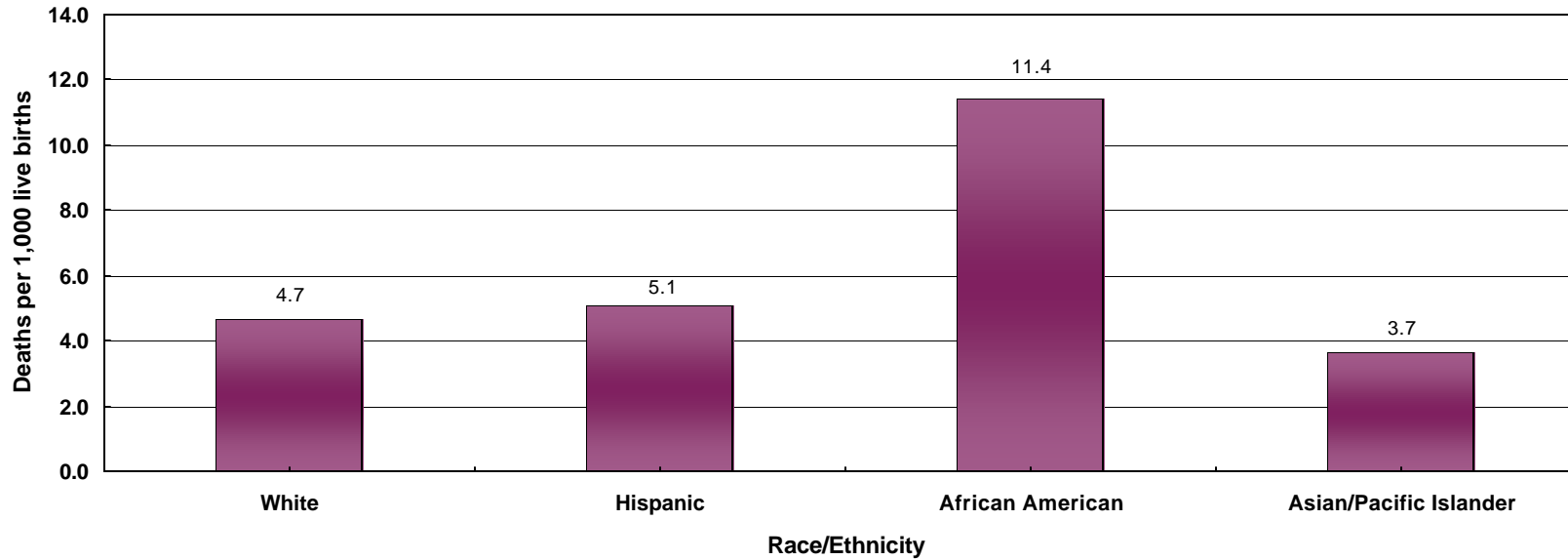
Infant Deaths per 1,000 Live Births California vs. Los Angeles County, 1990 - 2001



Year 2010 Objective: Reduce the infant mortality rate to no more than 4.5 per 1,000 live births.

Source: California Department of Health Services, Center for Health Statistics, Vital Statistics, 1990-2001

Infant Mortality Rate by Race/Ethnicity*
Los Angeles County, 2001



Los Angeles County, 2001					Total Live Births
Race/Ethnicity	Infant Mortality		95% Confidence Interval		
	Number	Rate	Lower	Upper	
White	132	4.7	3.9	5.5	28,179
Hispanic	491	5.1	4.6	5.5	96,288
African American	145	11.4	9.6	13.3	12,671
Asian/Pacific Islander	57	3.7	2.7	4.6	15,537
Native American	0	N/C**	N/C**	N/C**	253
Other/Unknown	3	N/C**	N/C**	N/C**	595
Total	828	5.4	5.0	5.8	153,523

* White, African American, Native American and other races exclude Hispanic ethnicity
 Hispanic includes any race category
 ** Rates are not calculated if fewer than five deaths.

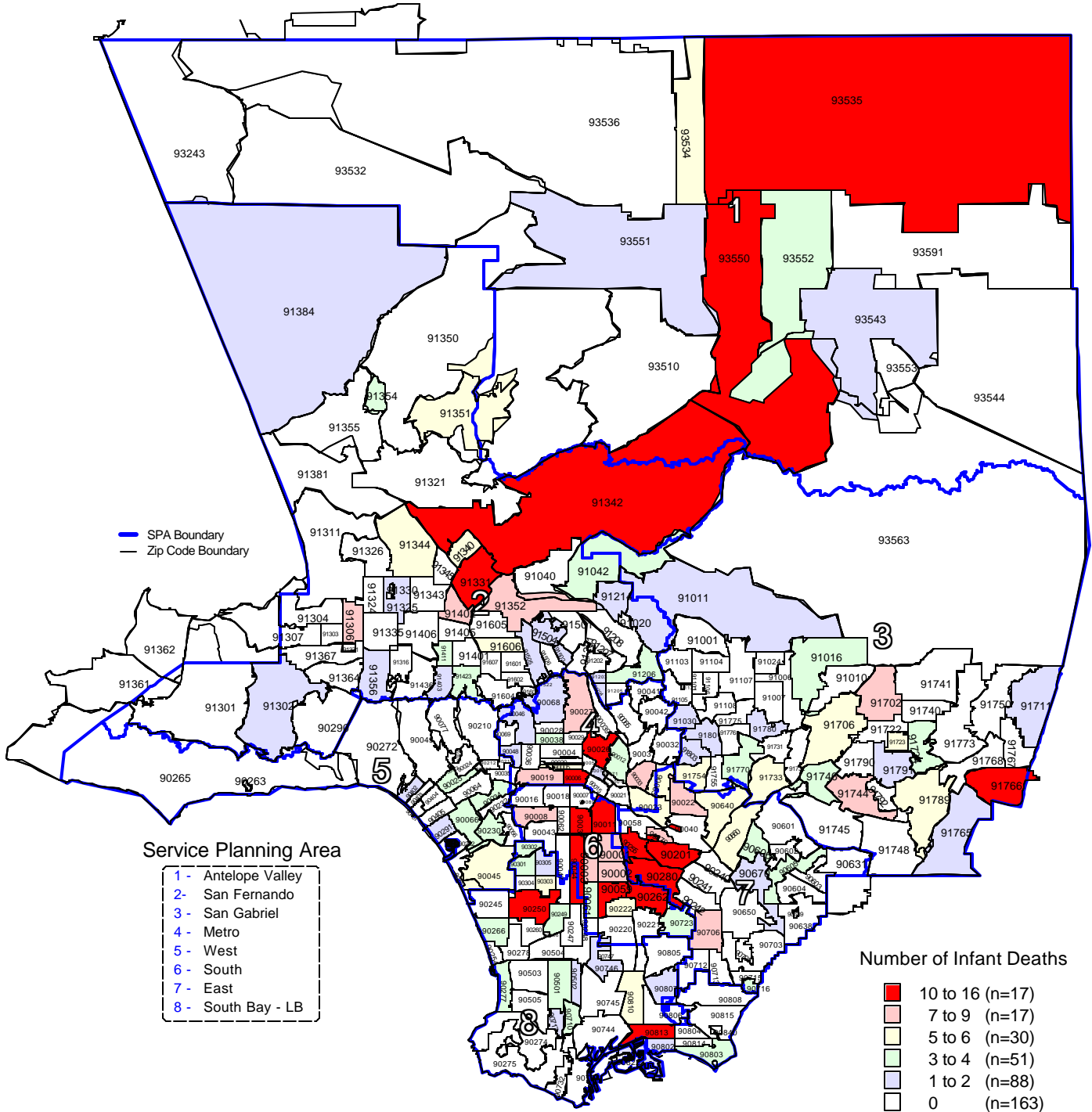
Year 2010 Objective: Reduce the infant mortality rate to no more than 4.5 per 1,000 live births.

Note: Infant mortality rate is defined as deaths occurring less than 365 days per 1,000 live births

Source: California Department of Health Services, Center for Health Statistics, Vital Statistics, 2001

Number of Infant Deaths by Zip Code* and Service Planning Area (SPA)

Los Angeles County, 2001



* Los Angeles County zip code boundaries as of April 2001.

n = total number of zip codes in range

Total number of live births in Los Angeles County, 2001 = 153,523

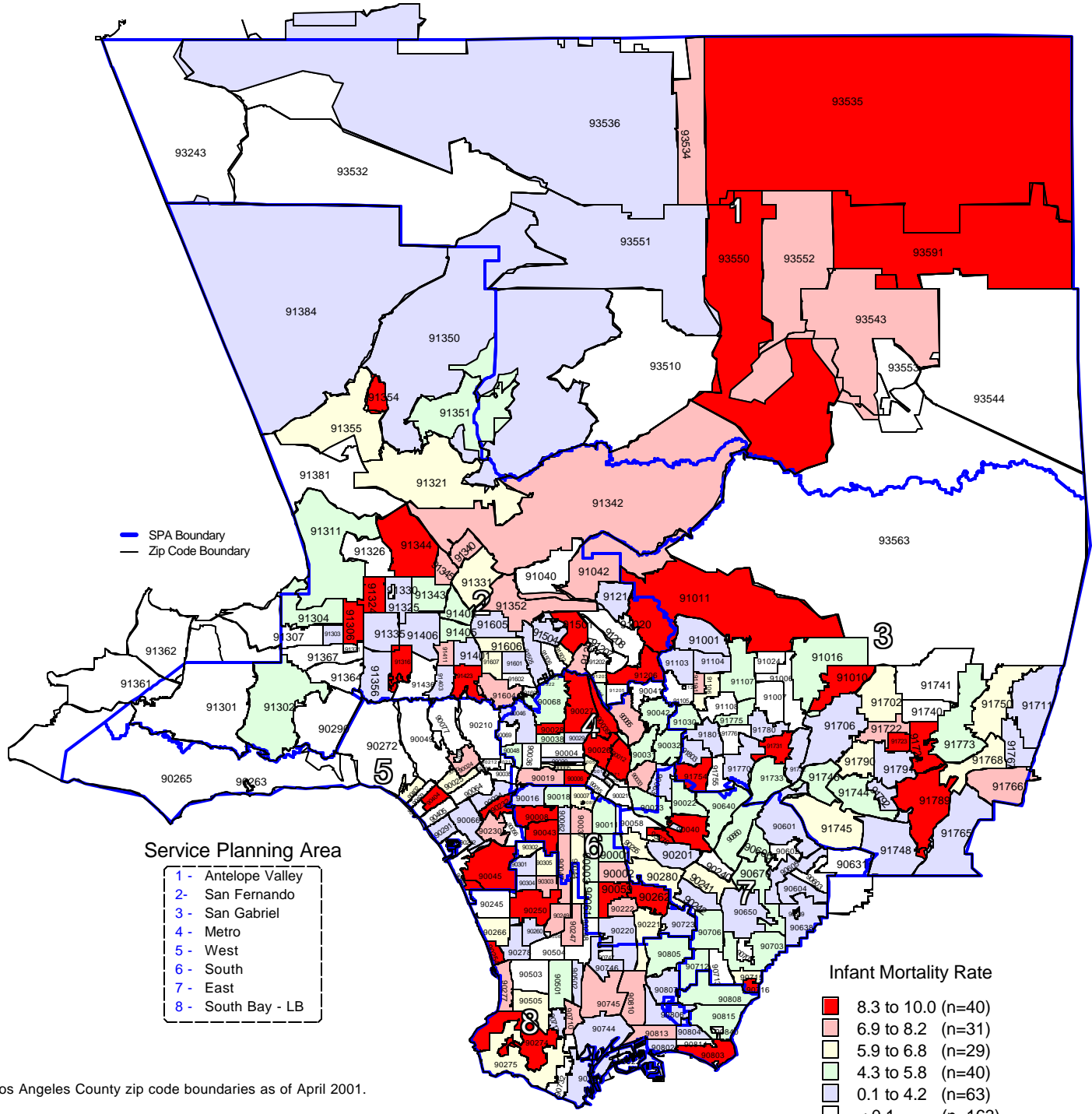
Total number of Infant deaths in Los Angeles County, 2001 = 828

Note: Infant death is defined as death occurring at less than 365 days of age

Source: California Department of Health Services
Center for Health Statistics, Vital Statistics, 2001

Infant Mortality Rate by Zip Code* and Service Planning Area (SPA)

Los Angeles County, 2001



* Los Angeles County zip code boundaries as of April 2001.

Total Number of live births in Los Angeles County, 2001 = 153,523

Total Number of Infant deaths in Los Angeles County, 2001= 828

Note: Infant mortality rate is defined as death occurring in less than 365 days of age per 1,000 live births

Source: California Department of Health Services
Center for Health Statistics, Vital Statistics, 2001

n = total number of zip codes in range

TITLE V INDICATOR TEMPLATES

INDICATOR: Neonatal mortality

DEFINITION: The number of infant deaths per 1,000 live births occurring at less than 28 days of age

NUMERATOR: The number of infant deaths occurring at less than 28 days of age, by place of residence, in a calendar year

DENOMINATOR: The total number of live births, by place of residence, in a calendar year

HEALTHY PEOPLE 2010 OBJECTIVE:
Reduce the neonatal mortality rate to no more than 2.9 per 1,000 live births. (Baseline: 4.8 in 1998) (Objective 16.1d)

RISK FACTORS: Congenital anomalies; respiratory distress syndrome; short gestation; low birthweight; maternal complications; race/ethnicity (African American, Puerto Rican)

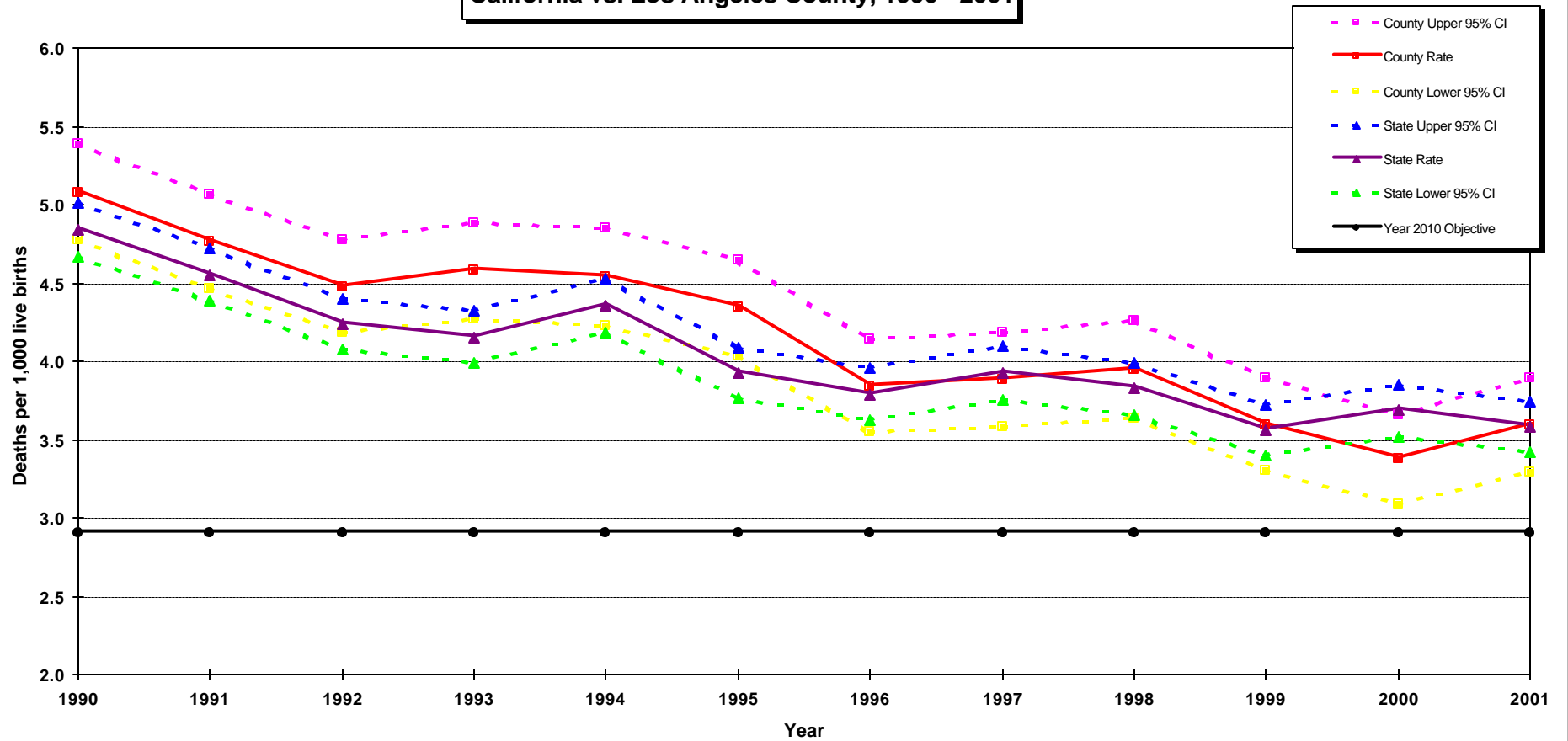
See also risk factors for infant mortality.

Year	California				LA County			
	Neonatal Mortality		95% Confidence Interval		Neonatal Mortality		95% Confidence Interval	
	Number	Rate	Lower	Upper	Number	Rate	Lower	Upper
1990	2,959	4.8	4.7	5.0	1,037	5.1	4.8	5.4
1991	2,774	4.6	4.4	4.7	966	4.8	4.5	5.1
1992	2,545	4.2	4.1	4.4	884	4.5	4.2	4.8
1993	2,429	4.2	4.0	4.3	868	4.6	4.3	4.9
1994	2,467	4.4	4.2	4.5	819	4.5	4.2	4.9
1995	2,164	3.9	3.8	4.1	759	4.3	4.0	4.6
1996	2,041	3.8	3.6	4.0	649	3.8	3.5	4.1
1997	2,056	3.9	3.8	4.1	629	3.9	3.6	4.2
1998	1,993	3.8	3.7	4.0	626	3.9	3.6	4.3
1999	1,843	3.6	3.4	3.7	561	3.6	3.3	3.9
2000	1,957	3.7	3.5	3.8	531	3.4	3.1	3.7
2001	1,889	3.6	3.4	3.7	551	3.6	3.3	3.9

DENOMINATOR: Live Births	
California	LA County
611,666	204,124
609,228	202,737
600,838	197,415
584,483	189,706
567,034	180,394
551,226	174,862
538,628	168,973
524,174	162,036
521,265	158,604
518,073	156,153
531,285	157,391
527,371	153,523

Source: California Department of Health Services, Center for Health Statistics, Vital Statistics, 2001

Neonatal Deaths per 1,000 Live Births California vs. Los Angeles County, 1990 - 2001

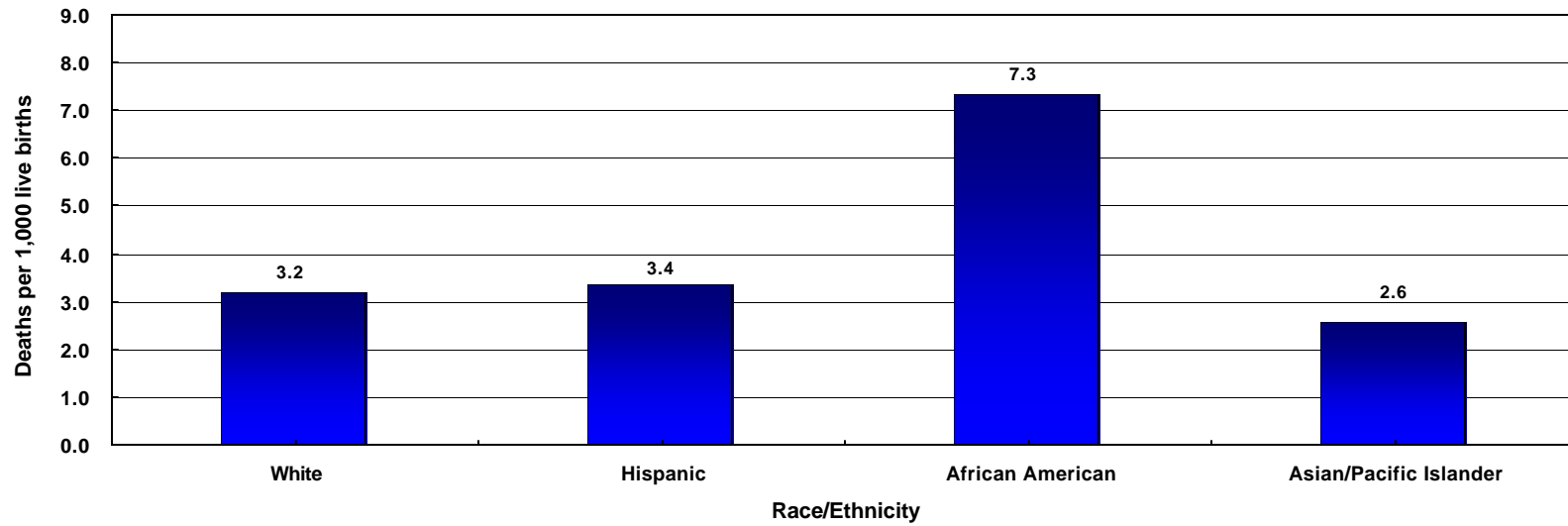


Year 2010 Objective: Reduce the neonatal mortality rate to no more than 2.9 per 1,000 live births.

Source: California Department of Health Services, Center for Health Statistics, Vital Statistics, 2001

Neonatal Mortality Rate by Race/Ethnicity*

Los Angeles County, 2001



Los Angeles County, 2001				
Race/Ethnicity	Neonatal Mortality		95 % Confidence Interval	
	Number	Rate	Lower	Upper
White	90	3.2	2.5	3.9
Hispanic	325	3.4	3.0	3.7
African American	93	7.3	5.9	8.8
Asian/Pacific Islander	40	2.6	1.8	3.4
Native American	0	N/C**	N/C**	N/C**
Other/Unknown	3	N/C**	N/C**	N/C**
Total	551	3.6	3.3	3.9

Total Live Births
28,179
96,288
12,671
15,537
253
595
153,523

* White, African American, Asian, Native American and other races exclude Hispanic ethnicity. Hispanic includes any race category. Filipino is included in Asian.

** Rates are not calculated if fewer than five deaths.

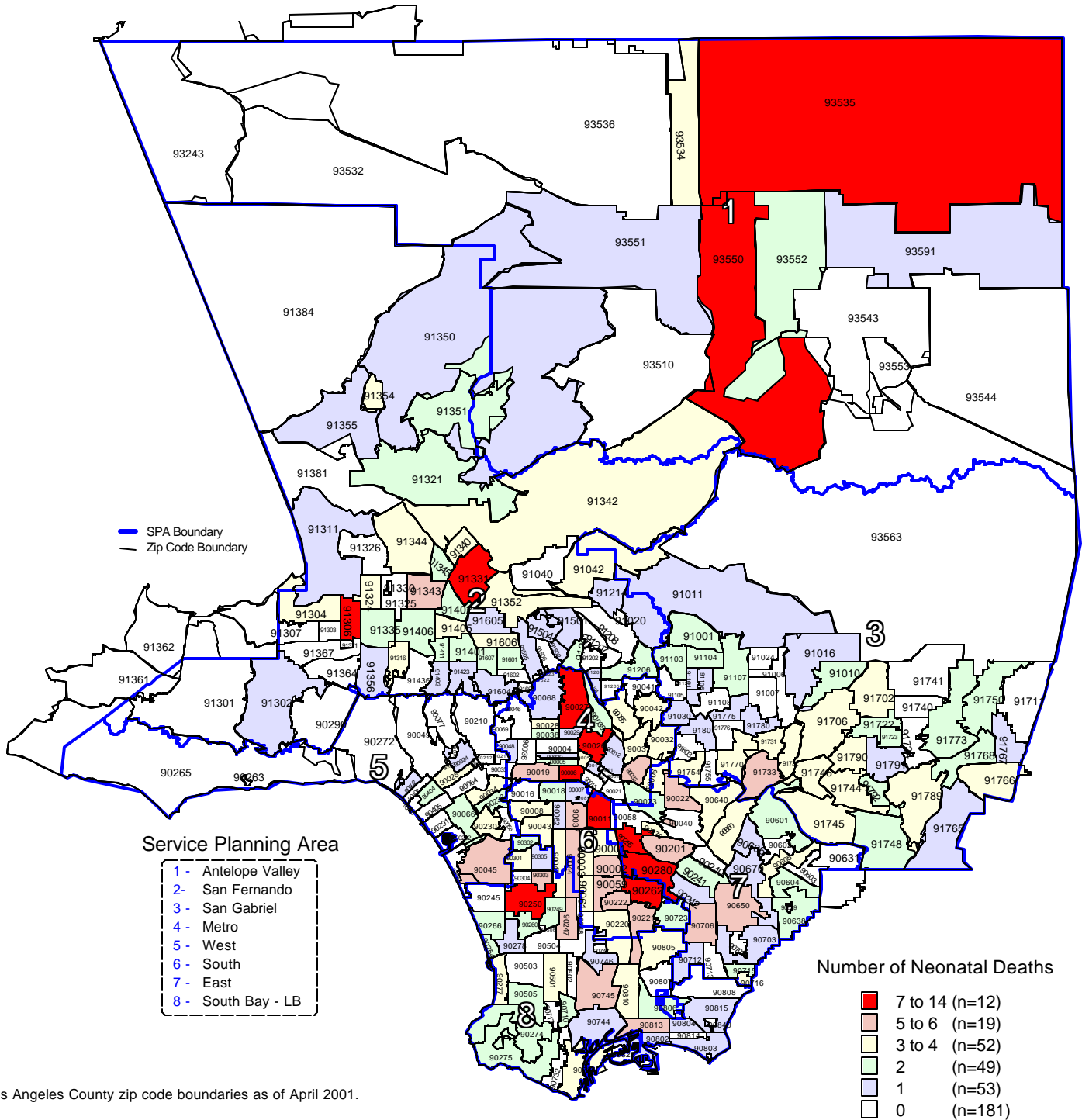
Year 2010 Objective: Reduce the neonatal mortality rate to no more than 2.9 per 1,000 live births.

Note: Neonatal mortality rate is defined as deaths less than 28 days per 1,000 live births

Source: California Department of Health Services, Center for Health Statistics, Vital Statistics, 2001

Los Angeles County - Department of Health Services
Number of Neonatal Deaths
by Zip Code* and Service Planning Area (SPA)

Los Angeles County, 2001



* Los Angeles County zip code boundaries as of April 2001.

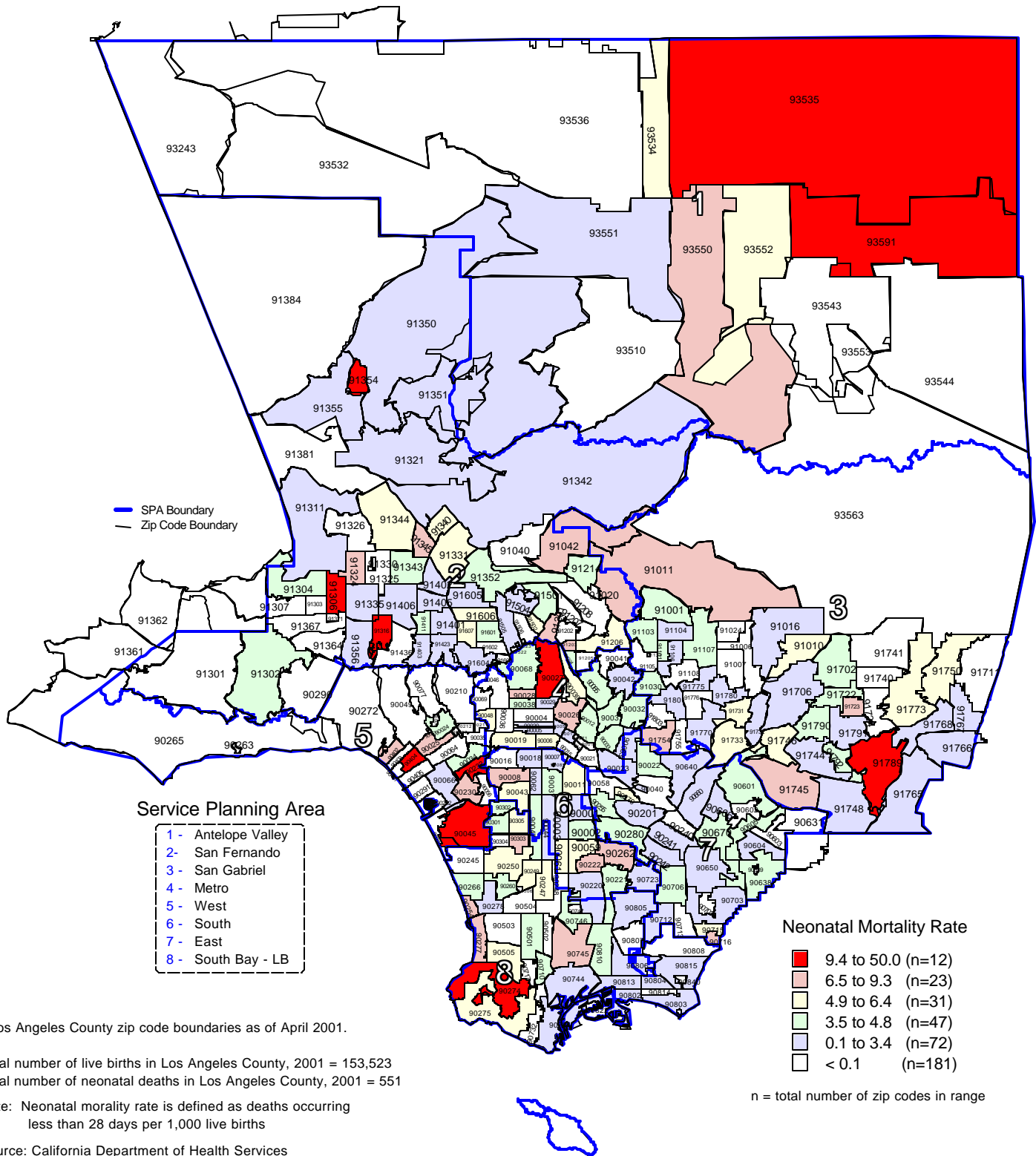
Total number of live births in Los Angeles County, 2001 = 153,523
 Total number of neonatal deaths in Los Angeles County, 2001 = 551

Note: Neonatal deaths are defined as deaths occurring less than 28 days
 Source: California Department of Health Services
 Center for Health Statistics, Vital Statistics, 2001

n = total number of zip codes in range

Neonatal Mortality Rate by Zip Code* and Service Planning Area (SPA)

Los Angeles County, 2001



* Los Angeles County zip code boundaries as of April 2001.

Total number of live births in Los Angeles County, 2001 = 153,523
 Total number of neonatal deaths in Los Angeles County, 2001 = 551

Note: Neonatal mortality rate is defined as deaths occurring less than 28 days per 1,000 live births

Source: California Department of Health Services
 Center for Health Statistics, Vital Statistics, 2001

n = total number of zip codes in range

TITLE V INDICATOR TEMPLATES

INDICATOR: Post-neonatal mortality

DEFINITION: The number of infant deaths per 1,000 live births occurring between 28 and 364 days of age

NUMERATOR: The number of infant deaths occurring at age 28 to 364 days of age, by place of residence, in a calendar year

DENOMINATOR: The total number of live births, by place of residence, in a calendar year

HEALTHY PEOPLE 2010 OBJECTIVE:
Reduce the post-neonatal mortality rate to no more than 1.2 per 1,000 live births. (Baseline: 2.4 in 1998) (Objective 16.1e)

RISK FACTORS: Congenital anomalies; injuries; infection in late pregnancy; family history of SIDS; maternal smoking or drug use; young maternal age (teen births); race/ethnicity (African American, American Indian, Puerto Rican)

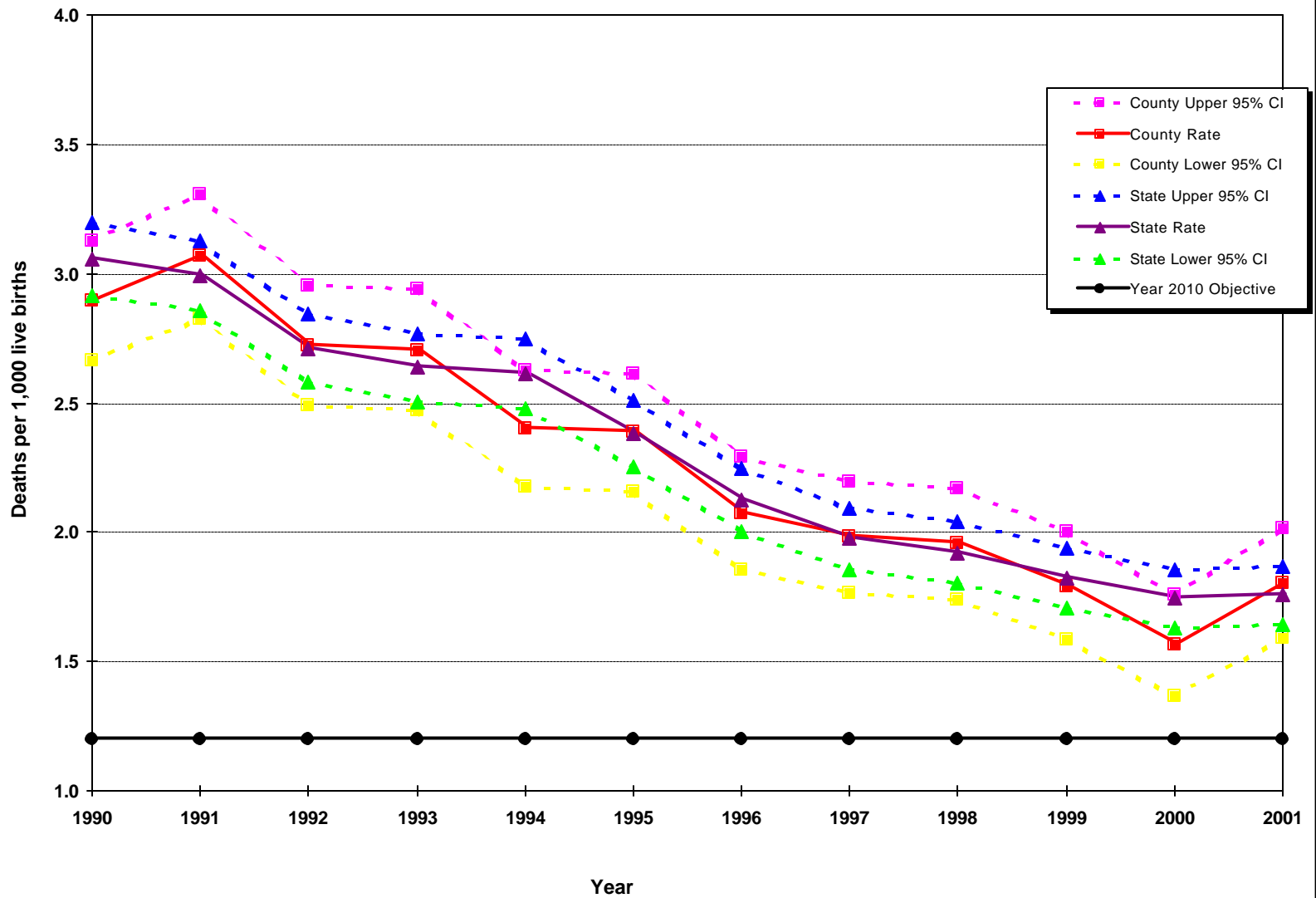
See also risk factors for infant mortality.

Year	California				LA County			
	Post-Neonatal Mortality		95% Confidence Interval		Post-Neonatal Mortality		95% Confidence Interval	
	Number	Rate	Lower	Upper	Number	Rate	Lower	Upper
1990	1,869	3.1	2.9	3.2	591	2.9	2.7	3.1
1991	1,822	3.0	2.9	3.1	622	3.1	2.8	3.3
1992	1,629	2.7	2.6	2.8	537	2.7	2.5	2.9
1993	1,541	2.6	2.5	2.8	513	2.7	2.5	2.9
1994	1,481	2.6	2.5	2.7	433	2.4	2.2	2.6
1995	1,314	2.4	2.3	2.5	417	2.4	2.2	2.6
1996	1,145	2.1	2.0	2.2	350	2.1	1.9	2.3
1997	1,035	2.0	1.9	2.1	321	2.0	1.8	2.2
1998	1,001	1.9	1.8	2.0	310	2.0	1.7	2.2
1999	944	1.8	1.7	1.9	280	1.8	1.6	2.0
2000	927	1.7	1.6	1.9	246	1.6	1.4	1.8
2001	926	1.8	1.6	1.9	277	1.8	1.6	2.0

DENOMINATOR: Live Births	
California	LA County
611,666	204,124
609,228	202,737
600,838	197,415
584,483	189,706
567,034	180,394
551,226	174,862
538,628	168,973
524,174	162,036
521,265	158,604
518,073	156,153
531,285	157,391
527,371	153,523

Source: California Department of Health Services, Center for Health Statistics, Vital Statistics, 1990-2001

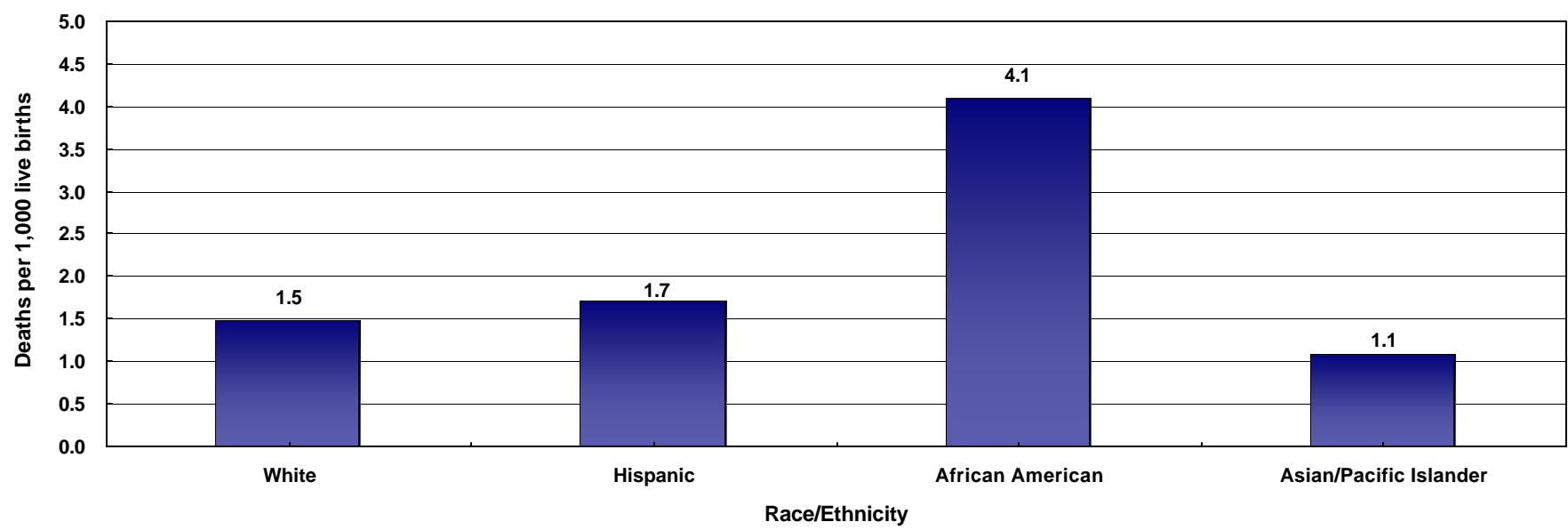
Post-Neonatal Deaths per 1,000 Live Births California vs. Los Angeles County, 1990 - 2001



Year 2010 Objective: Reduce the neonatal mortality rate to no more than 1.2 per 1,000 live births.

Source: California Department of Health Services, Center for Health Statistics, Vital Statistics, 1990-2001

Post-Neonatal Mortality Rate by Race/Ethnicity*
Los Angeles County, 2001



Los Angeles County, 2001				
Race/Ethnicity	Post-neonatal Mortality		95 % Confidence Interval	
	Number	Rate	Lower	Upper
White	42	1.5	1.0	1.9
Hispanic	166	1.7	1.5	2.0
African American	52	4.1	3.0	5.2
Asian/Pacific Islander	17	1.1	0.6	1.6
Native American	0	N/C**	N/C**	N/C**
Other/Unknown	0	N/C**	N/C**	N/C**
Total	277	1.8	1.6	2.0

Total Live Births
28,179
96,288
12,671
15,537
253
595
153,523

* White, African American, Asian, Native American and other race exclude Hispanic ethnicity
 Hispanic includes any race category
 Filipino is included in Asian
 ** Rates are not calculated if fewer than five deaths.

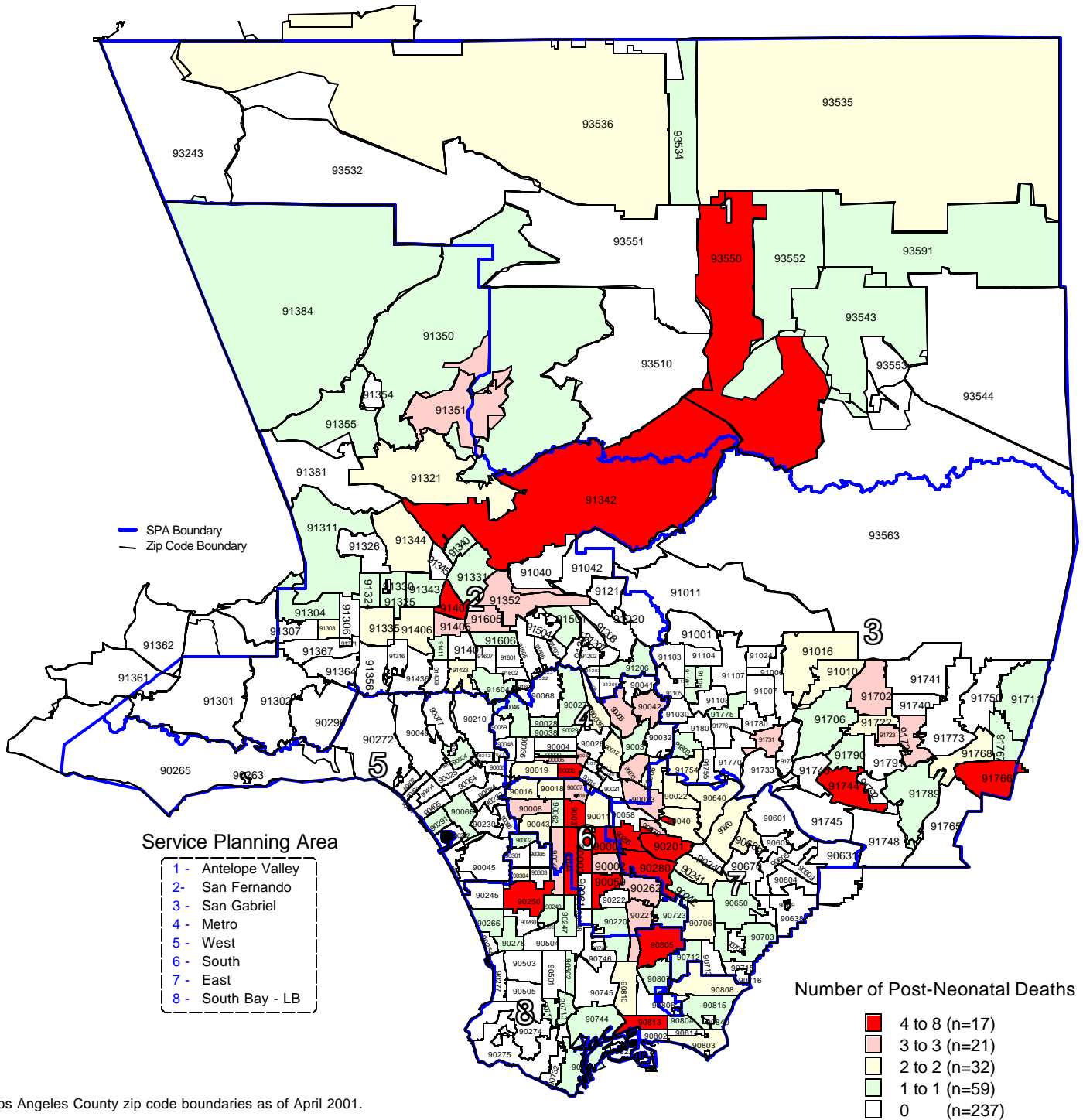
Year 2010 Objective: Reduce the post-neonatal mortality rate to no more than 1.2 per 1,000 live births.

Note: Post-neonatal mortality rate is defined as deaths occurring between ages 28 and 364 days per 1,000 live births

Source: California Department of Health Services, Center for Health Statistics, Vital Statistics, 2001

Los Angeles County - Department of Health Services
Number of Post-Neonatal Deaths
by Zip Code* and Service Planning Area (SPA)

Los Angeles County, 2001



* Los Angeles County zip code boundaries as of April 2001.

Total number of live births in Los Angeles County, 2001 = 153,523
 Total number of post-neonatal deaths in Los Angeles County, 2001 = 277

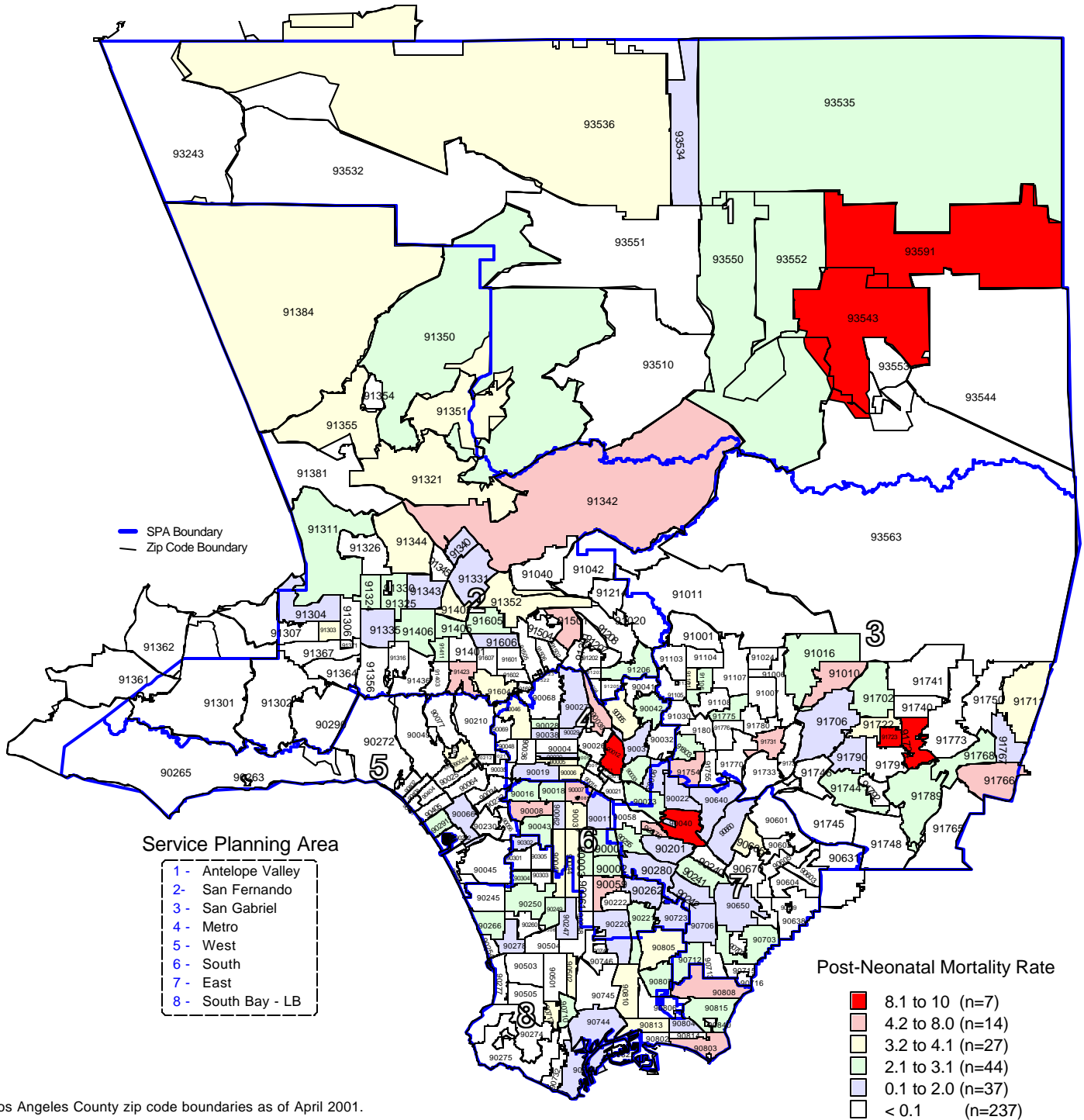
Note: Post-neonatal deaths are defined as deaths occurring between 28 days and 365 days

Source: California Department of Health Services
 Center for Health Statistics, Vital Statistics, 2001

n = total number of zip codes in range

Los Angeles County - Department of Health Services
Post-Neonatal Mortality Rate
by Zip Code* and Service Planning Area (SPA)

Los Angeles County, 2001



* Los Angeles County zip code boundaries as of April 2001.

Total number of live births in Los Angeles County, 2001 = 153,523
 Total number of post-neonatal deaths in Los Angeles County, 2001 = 277

Note: Post-neonatal deaths are defined as deaths occurring between 28 days and 365 days per 1,000 live births

Source: California Department of Health Services
 Center for Health Statistics, Vital Statistics, 2001

n = total number of zip codes in range