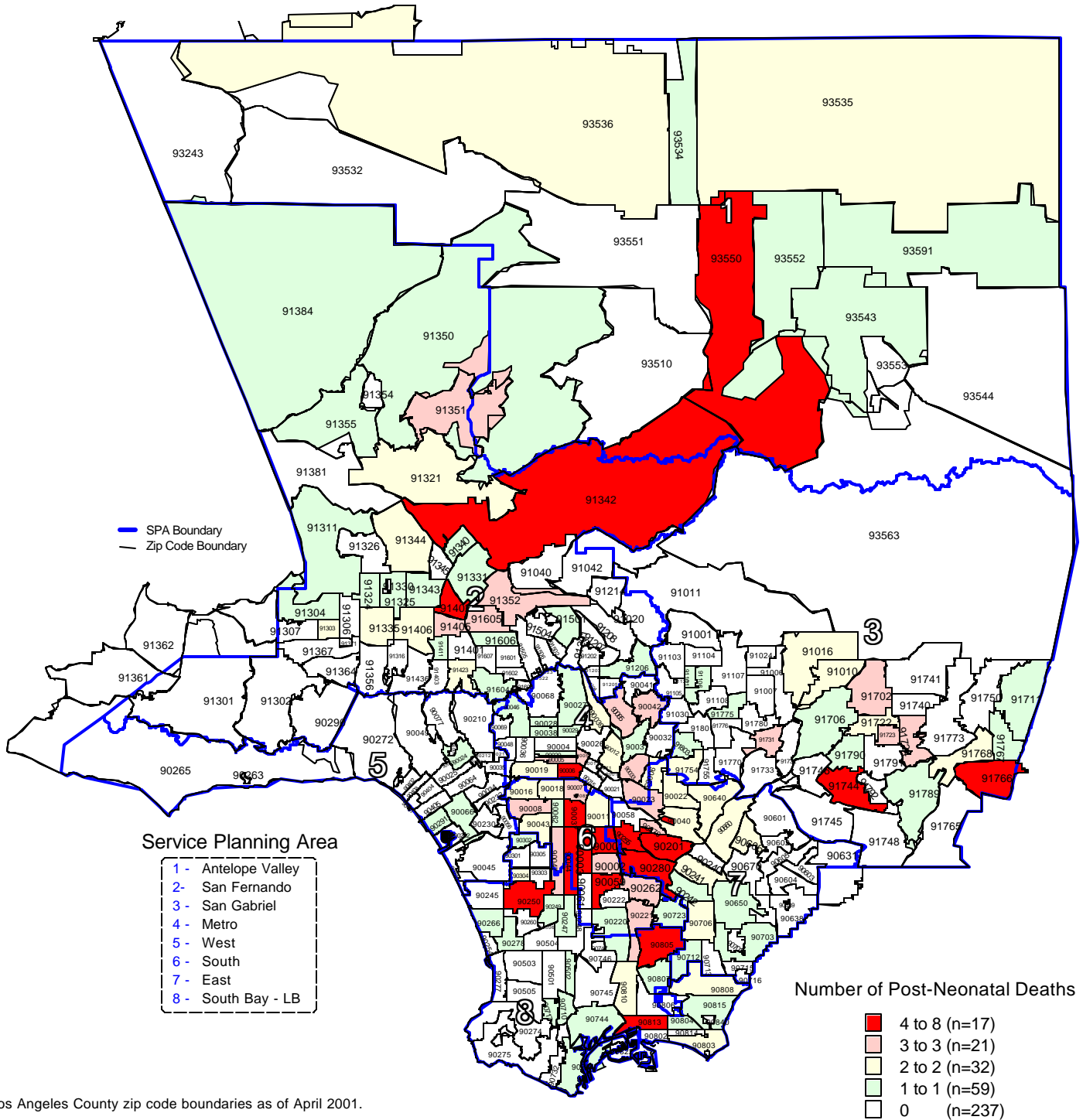


Los Angeles County - Department of Health Services
Number of Post-Neonatal Deaths
by Zip Code* and Service Planning Area (SPA)

Los Angeles County, 2001



* Los Angeles County zip code boundaries as of April 2001.

Total number of live births in Los Angeles County, 2001 = 153,523
 Total number of post-neonatal deaths in Los Angeles County, 2001 = 277

Note: Post-neonatal deaths are defined as deaths occurring between 28 days and 365 days

Source: California Department of Health Services
 Center for Health Statistics, Vital Statistics, 2001

n = total number of zip codes in range