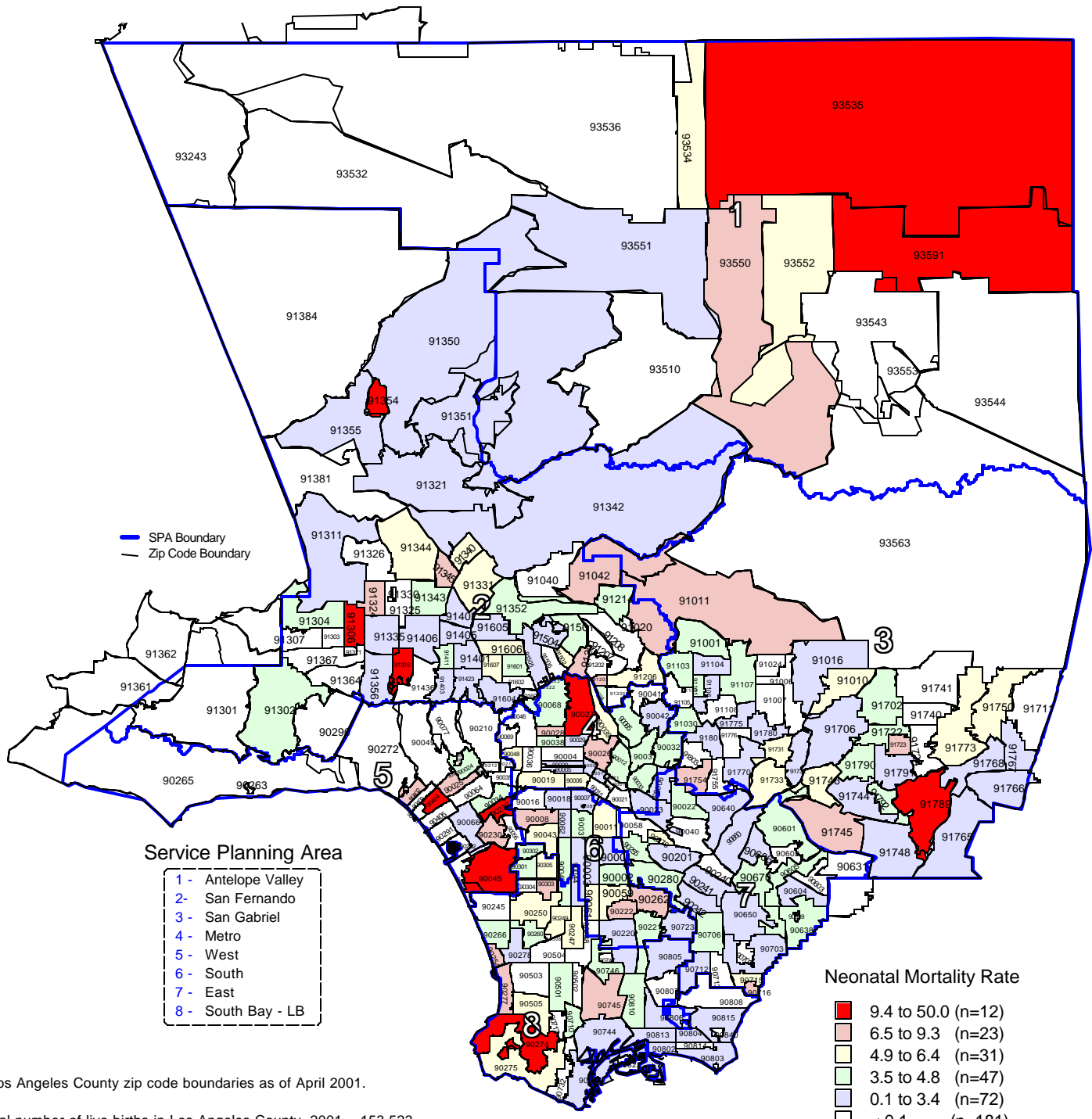


Neonatal Mortality Rate by Zip Code* and Service Planning Area (SPA)

Los Angeles County, 2001



* Los Angeles County zip code boundaries as of April 2001.

Total number of live births in Los Angeles County, 2001 = 153,523
 Total number of neonatal deaths in Los Angeles County, 2001 = 551

Note: Neonatal mortality rate is defined as deaths occurring less than 28 days per 1,000 live births

Source: California Department of Health Services
 Center for Health Statistics, Vital Statistics, 2001

n = total number of zip codes in range