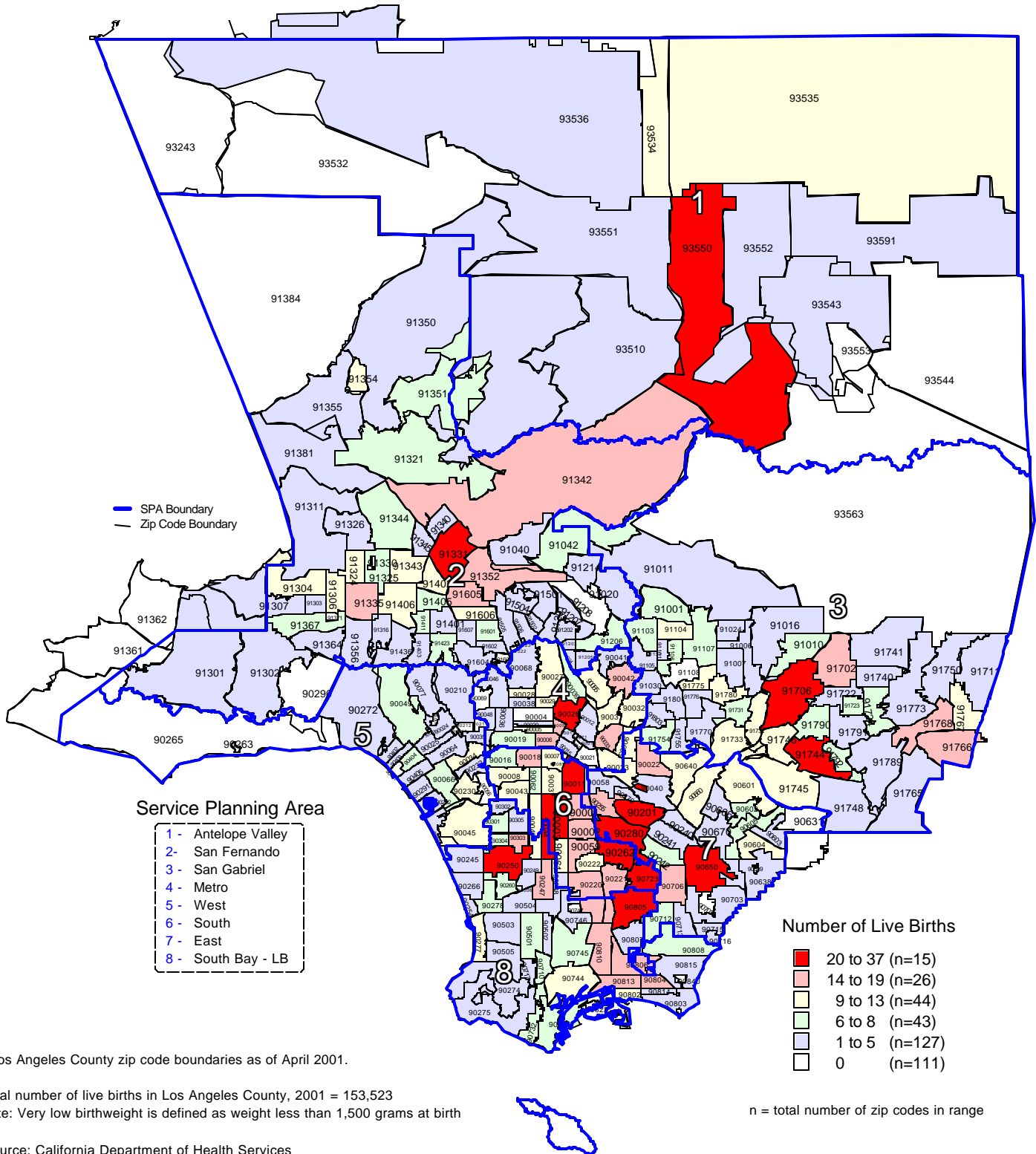


Los Angeles County - Department of Health Services  
**Number of Very Low Birthweight (VLBW) Live Births  
 by Zip Code\* and Service Planning Area (SPA)**

Los Angeles County, 2001



\* Los Angeles County zip code boundaries as of April 2001.

Total number of live births in Los Angeles County, 2001 = 153,523  
 Note: Very low birthweight is defined as weight less than 1,500 grams at birth

Source: California Department of Health Services  
 Center for Health Statistics, Vital Statistics, 2001