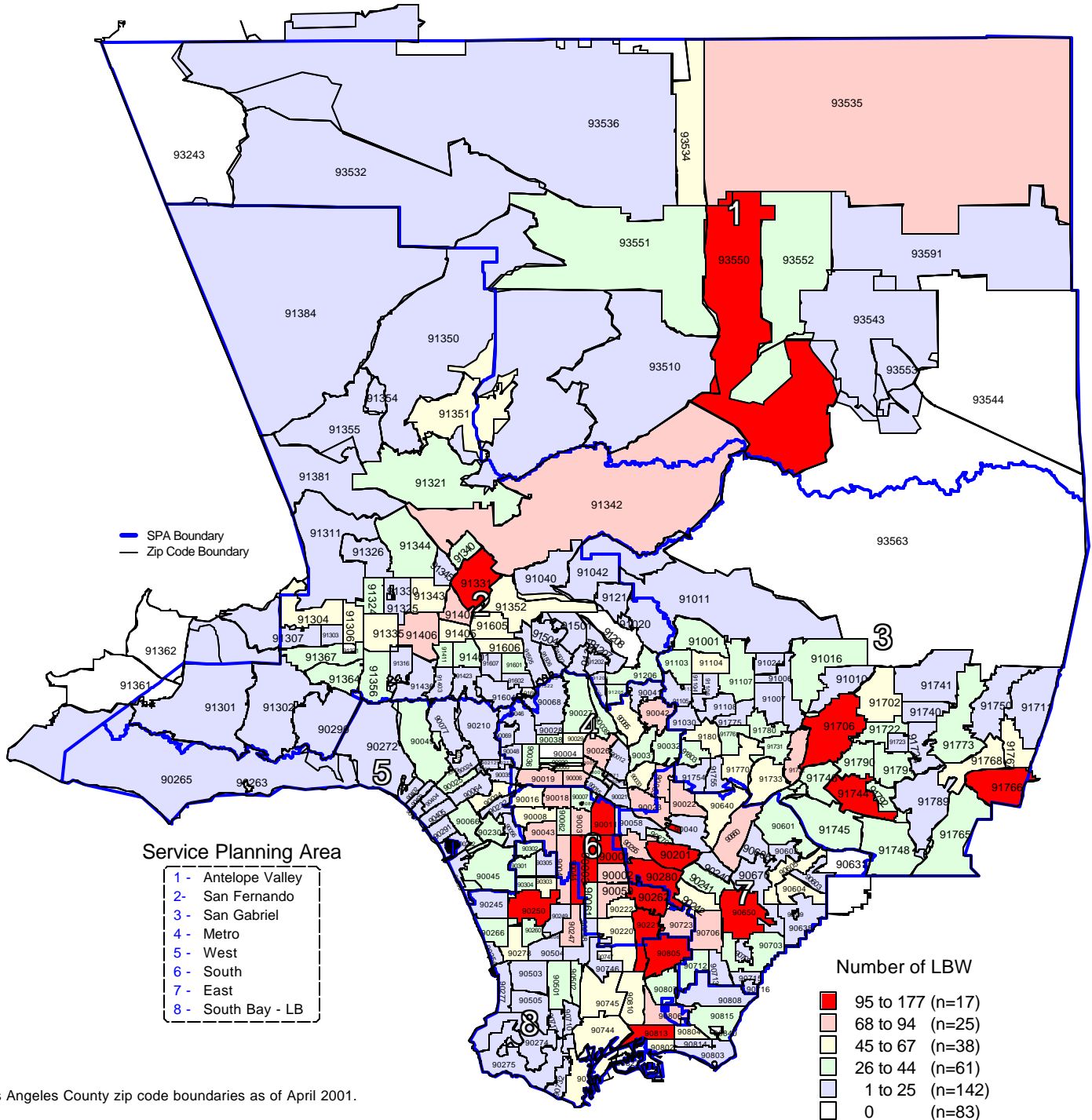


Number of Low Birthweight (LBW) Live Births by Zip Code* and Service Planning Area (SPA)

Los Angeles County, 2001



* Los Angeles County zip code boundaries as of April 2001.

Total number of live births in Los Angeles County, 2001 = 153,523

Note: Low birthweight is defined as weight less than 2,500 grams at birth

Source: California Department of Health Services
Center for Health Statistics, Vital Statistics, 2001

n = total number of zip codes in range