

INFANT MORTALITY

TITLE V INDICATOR TEMPLATES

INDICATOR: Infant mortality

DEFINITION: The number of infant deaths occurring at less than 365 days of age per 1,000 live births

NUMERATOR: The number of infant deaths occurring at less than 365 days of age, by place of residence, in a calendar year

DENOMINATOR: The total number of live births, by place of residence, in a calendar year

HEALTHY PEOPLE 2010 OBJECTIVE:

Reduce the infant mortality rate to no more than 4.5 per 1,000 live births. (Baseline: 7.2 per 1,000 live births in 1998) (Objective 16-1c)
No more than 4.5 infant deaths per 1,000 live births

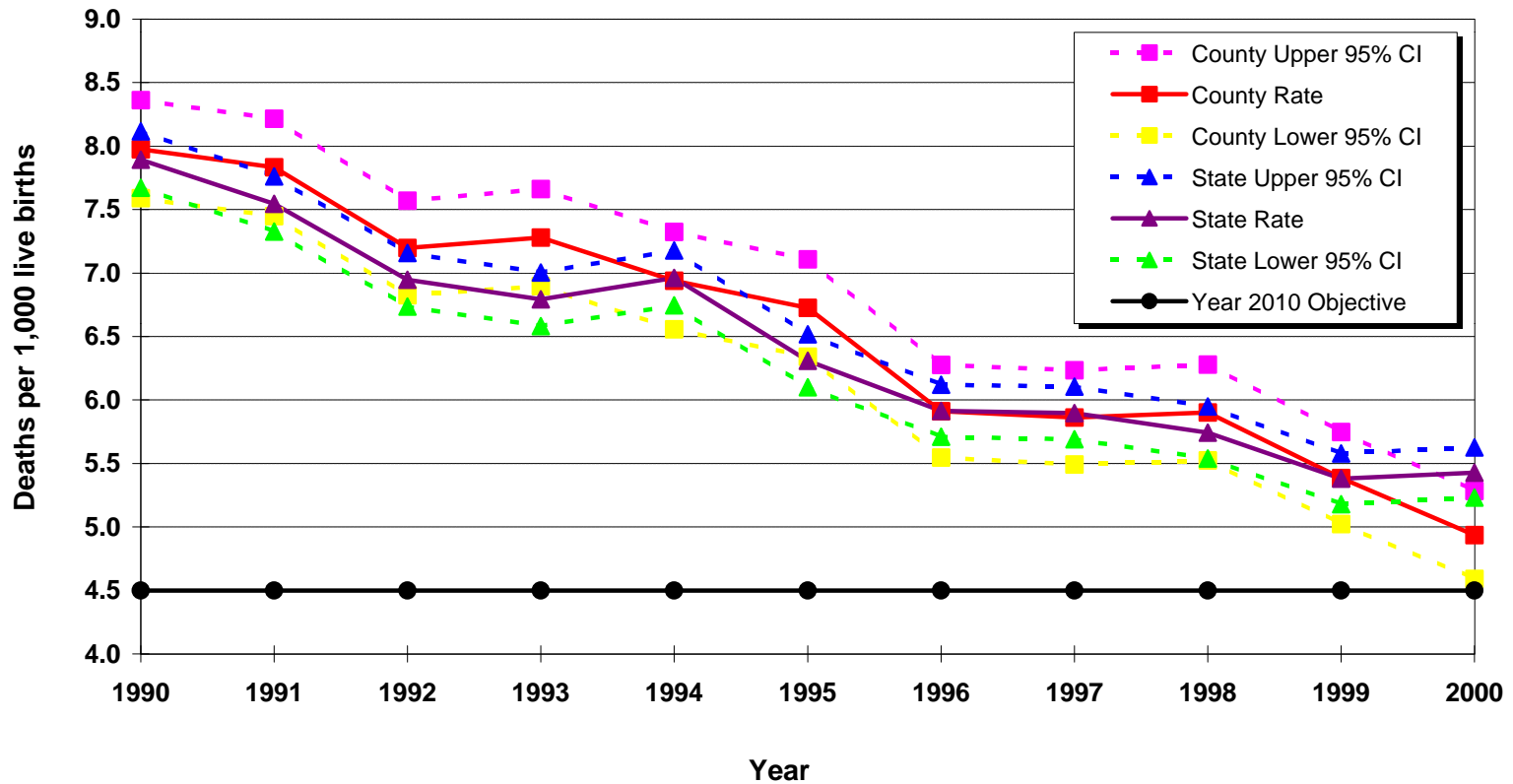
RISK FACTORS: Race/ethnicity; prematurity/disorders related to short gestation; low birth weight; congenital anomalies; young maternal age; low maternal education level; maternal tobacco use; maternal alcohol or substance use/abuse; poor maternal nutrition; inadequate prenatal care; unintended pregnancy; maternal psychosocial problems; maternal medical complications/ chronic illness during pregnancy (including diabetes); pregnancy complications; short interpregnancy interval; injury (including domestic violence); infection; respiratory distress syndrome; family history of SIDS

Year	California				LA County			
	Infant Mortality		95% Confidence Interval		Infant Mortality		95% Confidence Interval	
	Number	Rate	Lower	Upper	Number	Rate	Lower	Upper
1990	4,828	7.9	7.7	8.1	1,628	8.0	7.6	8.4
1991	4,596	7.5	7.3	7.8	1,588	7.8	7.4	8.2
1992	4,174	6.9	6.7	7.2	1,421	7.2	6.8	7.6
1993	3,970	6.8	6.6	7.0	1,381	7.3	6.9	7.7
1994	3,948	7.0	6.7	7.2	1,252	6.9	6.6	7.3
1995	3,478	6.3	6.1	6.5	1,176	6.7	6.3	7.1
1996	3,186	5.9	5.7	6.1	999	5.9	5.5	6.3
1997	3,091	5.9	5.7	6.1	950	5.9	5.5	6.2
1998	2,994	5.7	5.5	5.9	936	5.9	5.5	6.3
1999	2,787	5.4	5.2	5.6	841	5.4	5.0	5.7
2000	2,884	5.4	5.2	5.6	777	4.9	4.6	5.3

DENOMINATOR: Live Births	
California	LA County
611,666	204,124
609,228	202,737
600,838	197,415
584,483	189,706
567,034	180,394
551,226	174,862
538,628	168,973
524,174	162,036
521,265	158,604
518,073	156,153
531,285	157,391

Source: California Department of Health Services, Center for Health Statistics, Vital Statistics, 1990-2000

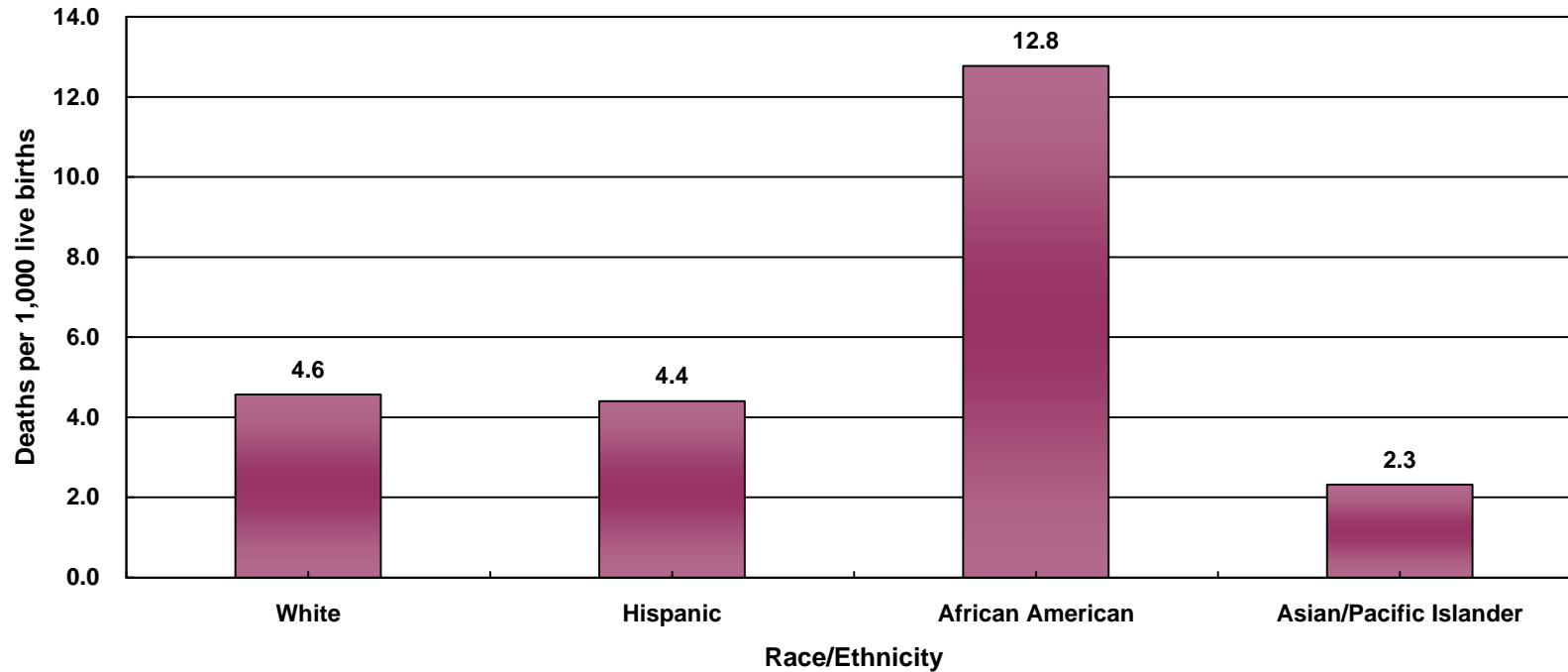
Infant Deaths per 1,000 Live Births California vs. Los Angeles County, 1990 - 2000



Year 2010 Objective: Reduce the infant mortality rate to no more than 4.5 per 1,000 live births.

Source: California Department of Health Services, Center for Health Statistics, Vital Statistics, 1990-2000

Infant Mortality Rate by Race/Ethnicity* Los Angeles County, 2000



Race/Ethnicity	Los Angeles County, 2000			
	Infant Mortality		95% Confidence Interval	
	Number	Rate	Lower	Upper
White	133	4.6	3.8	5.3
Hispanic	430	4.4	4.0	4.8
African American	172	12.8	10.9	14.7
Asian/Pacific Islander	38	2.3	1.6	3.1
Native American	0	N/C**	N/C**	N/C**
Other/Unknown	4	8.7	0.2	17.1
Total	777	4.9	4.6	5.3

Total Live Births
29,094
97,719
13,468
16,401
248
461
157,391

* White, African American, Native American and other races exclude Hispanic ethnicity
Hispanic includes any race category

** Rates are not calculated if fewer than five deaths.

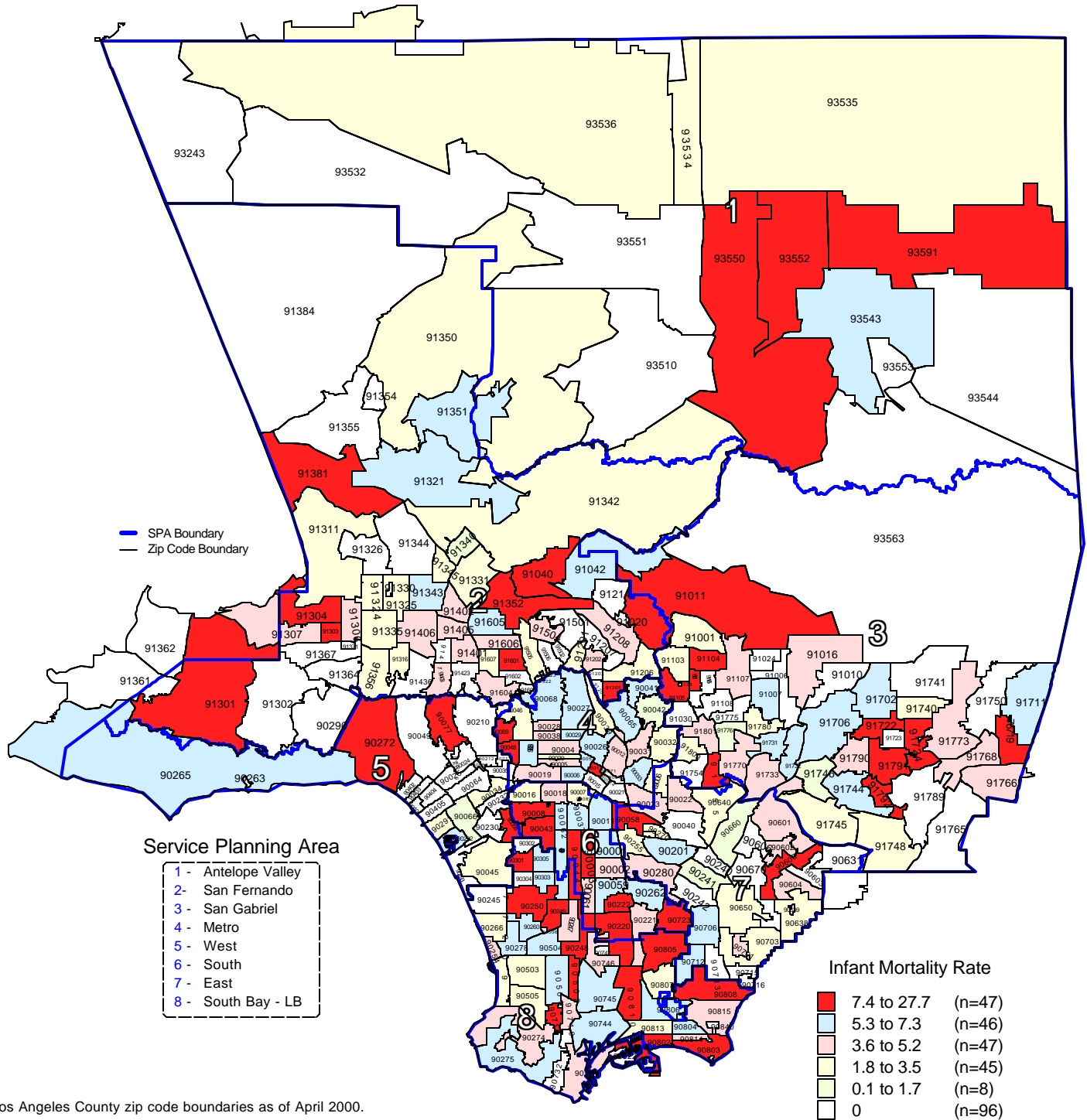
Year 2010 Objective: Reduce the infant mortality rate to no more than 4.5 per 1,000 live births.

Note: Infant mortality rate is defined as deaths occurring less than 365 days per 1,000 live births

Source: California Department of Health Services, Center for Health Statistics, Vital Statistics, 2000

Infant Mortality Rate by Zip Code* and Service Planning Area (SPA)

Los Angeles County, 2000



* Los Angeles County zip code boundaries as of April 2000.

Total Number of live births in Los Angeles County, 2000 = 157,391

Total Number of Infant deaths in Los Angeles County, 2000= 777

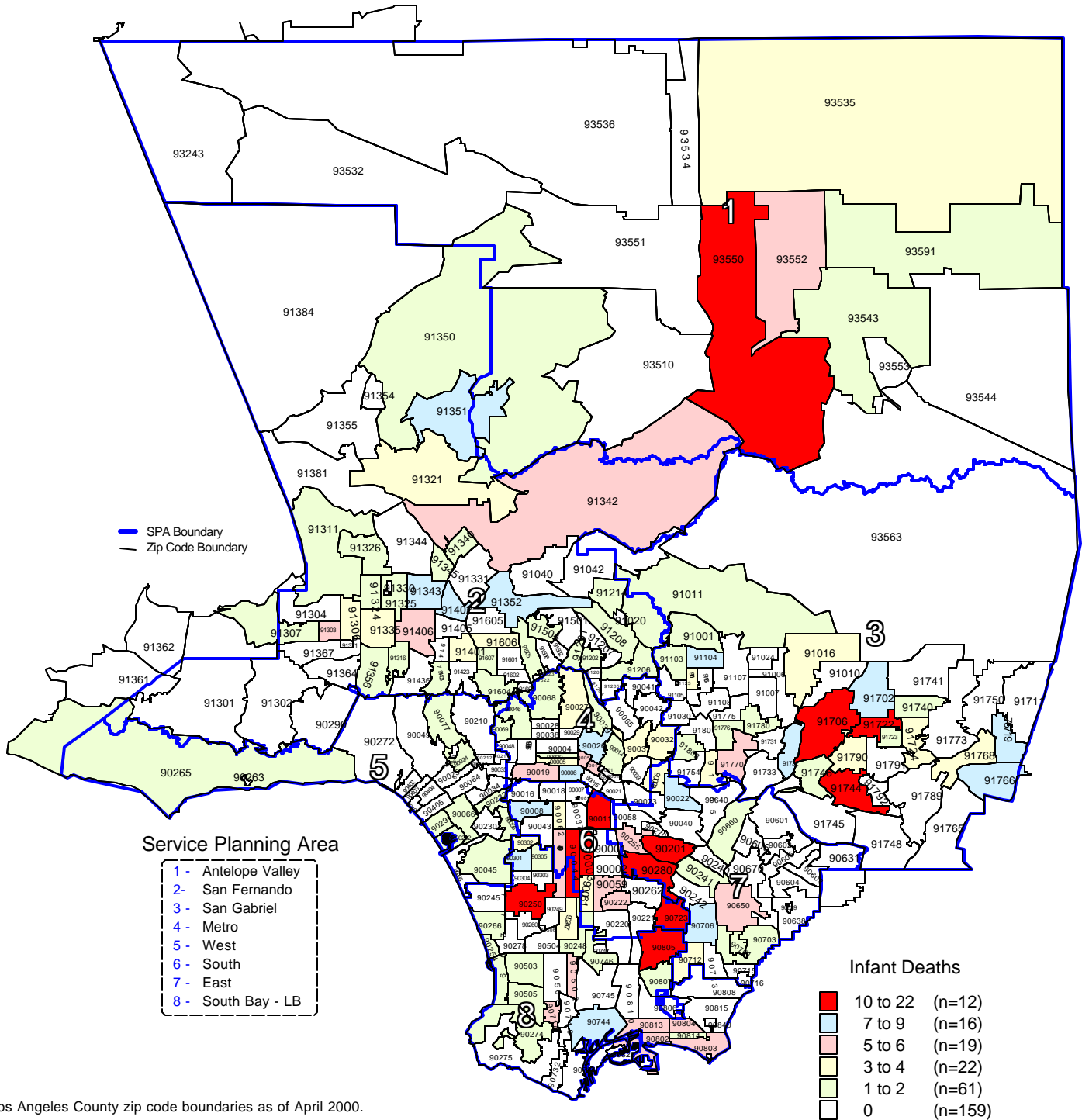
Note: Infant mortality rate is defined as death occurring in less than 365 days of age per 1,000 live births

Source: California Department of Health Services
Center for Health Statistics, Vital Statistics, 2000

n = total number of zip codes in range

Number of Infant Deaths by Zip Code* and Service Planning Area (SPA)

Los Angeles County, 2000



* Los Angeles County zip code boundaries as of April 2000.

Total Number of live births in Los Angeles County, 2000 = 157,391

Total Number of Infant deaths in Los Angeles County, 2000= 777

Note: Infant death is defined as death occurring at less than 365 days of age

Source: California Department of Health Services

Center for Health Statistics, Vital Statistics, 2000

n = total number of zip codes in range

TITLE V INDICATOR TEMPLATES

INDICATOR: Neonatal mortality

DEFINITION: The number of infant deaths per 1,000 live births occurring at less than 28 days of age

NUMERATOR: The number of infant deaths occurring at less than 28 days of age, by place of residence, in a calendar year

DENOMINATOR: The total number of live births, by place of residence, in a calendar year

HEALTHY PEOPLE 2010 OBJECTIVE:

Reduce the neonatal mortality rate to no more than 2.9 per 1,000 live births.
(Baseline: 4.8 in 1998) (Objective 16.1d)

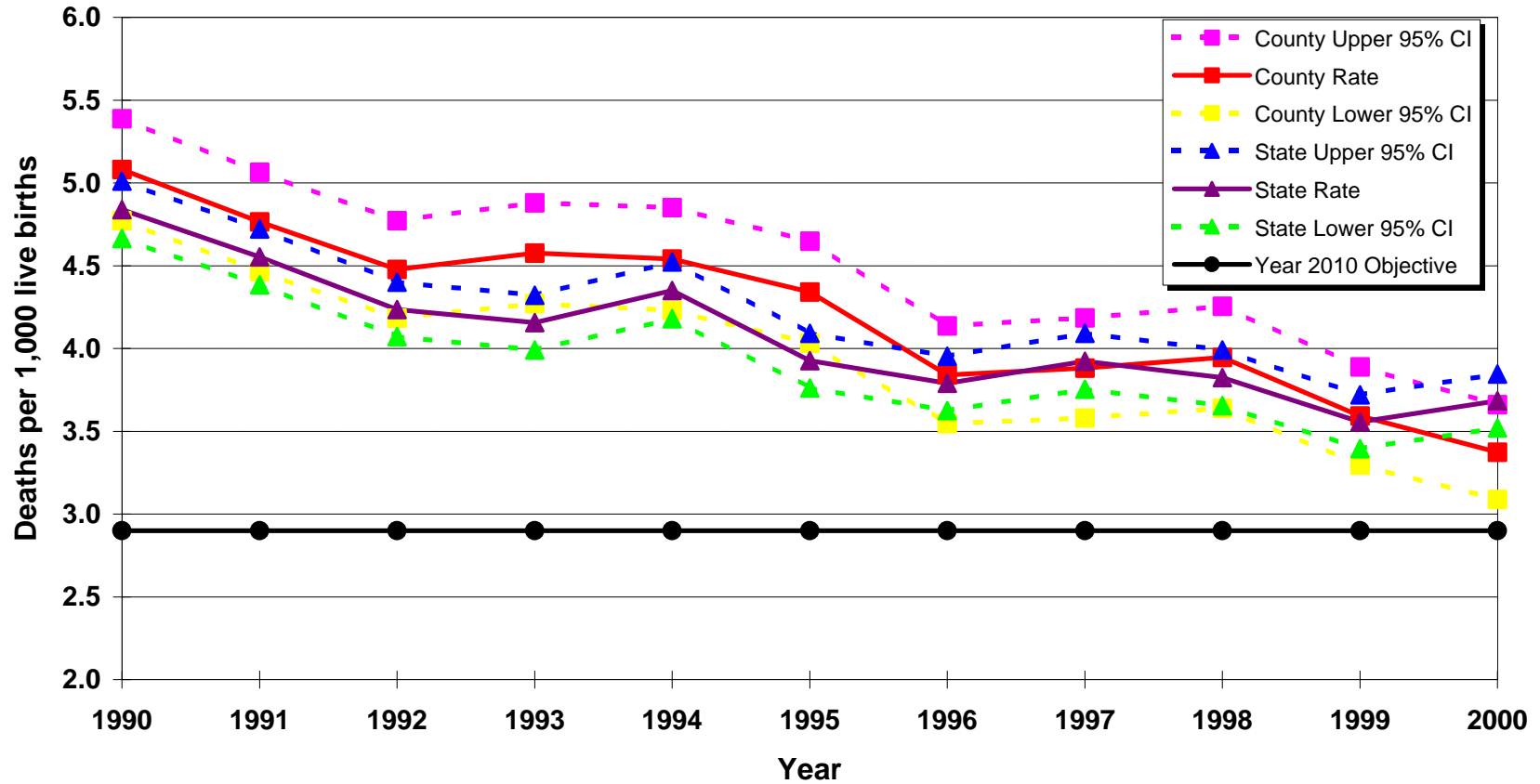
RISK FACTORS: Congenital anomalies; respiratory distress syndrome; short gestation; low birthweight; maternal complications; race/ethnicity (African American, Puerto Rican)

See also risk factors for infant mortality.

Year	California				LA County				DENOMINATOR: Live Births	
	Neonatal Mortality		95% Confidence Interval		Neonatal Mortality		95% Confidence Interval		California	LA County
	Number	Rate	Lower	Upper	Number	Rate	Lower	Upper		
1990	2,959	4.8	4.7	5.0	1,037	5.1	4.8	5.4	611,666	204,124
1991	2,774	4.6	4.4	4.7	966	4.8	4.5	5.1	609,228	202,737
1992	2,545	4.2	4.1	4.4	884	4.5	4.2	4.8	600,838	197,415
1993	2,429	4.2	4.0	4.3	868	4.6	4.3	4.9	584,483	189,706
1994	2,467	4.4	4.2	4.5	819	4.5	4.2	4.9	567,034	180,394
1995	2,164	3.9	3.8	4.1	759	4.3	4.0	4.6	551,226	174,862
1996	2,041	3.8	3.6	4.0	649	3.8	3.5	4.1	538,628	168,973
1997	2,056	3.9	3.8	4.1	629	3.9	3.6	4.2	524,174	162,036
1998	1,993	3.8	3.7	4.0	626	3.9	3.6	4.3	521,265	158,604
1999	1,843	3.6	3.4	3.7	561	3.6	3.3	3.9	518,073	156,153
2000	1,957	3.7	3.5	3.8	531	3.4	3.1	3.7	531,285	157,391

Source: California Department of Health Services, Center for Health Statistics, Vital Statistics, 1990-2000

Neonatal Deaths per 1,000 Live Births California vs. Los Angeles County, 1990-2000

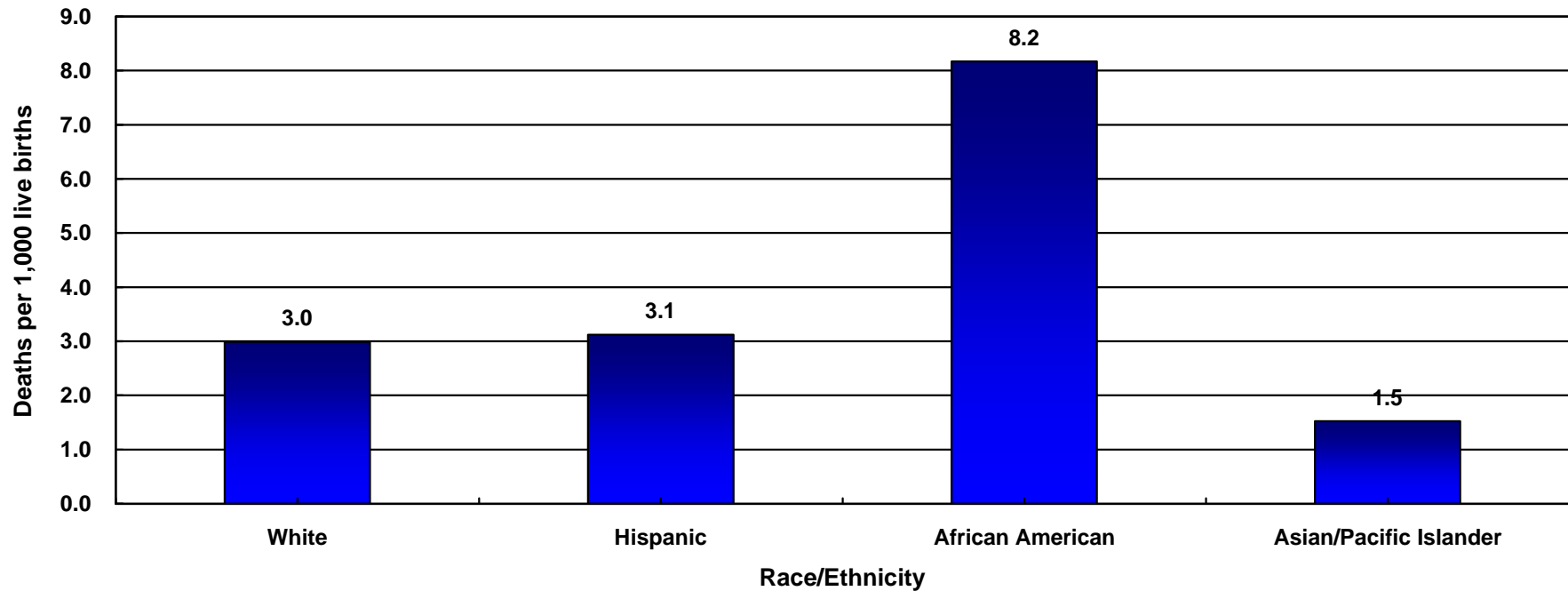


Year 2010 Objective: Reduce the neonatal mortality rate to no more than 3.9 per 1,000 live births.

Source: California Department of Health Services, Center for Health Statistics, Vital Statistics, 1990-2000

Neonatal Mortality Rate by Race/Ethnicity*

Los Angeles County, 2000



Race/Ethnicity	Los Angeles County, 2000			
	Neonatal Mortality		95 % Confidence Interval	
	Number	Rate	Lower	Upper
White	87	3.0	2.4	3.6
Hispanic	305	3.1	2.8	3.5
African American	110	8.2	6.6	9.7
Asian/Pacific Islander	25	1.5	0.9	2.1
Native American	0	N/C**	N/C**	N/C**
Other/Unknown	4	8.7	0.2	17.1
Total	531	3.4	3.1	3.7

Total Live Births
29,094
97,719
13,468
16,401
248
461
157,391

* White, African American, Asian, Native American and other races exclude Hispanic ethnicity. Hispanic includes any race category. Filipino is included in Asian.
 ** Rates are not calculated if fewer than five deaths.

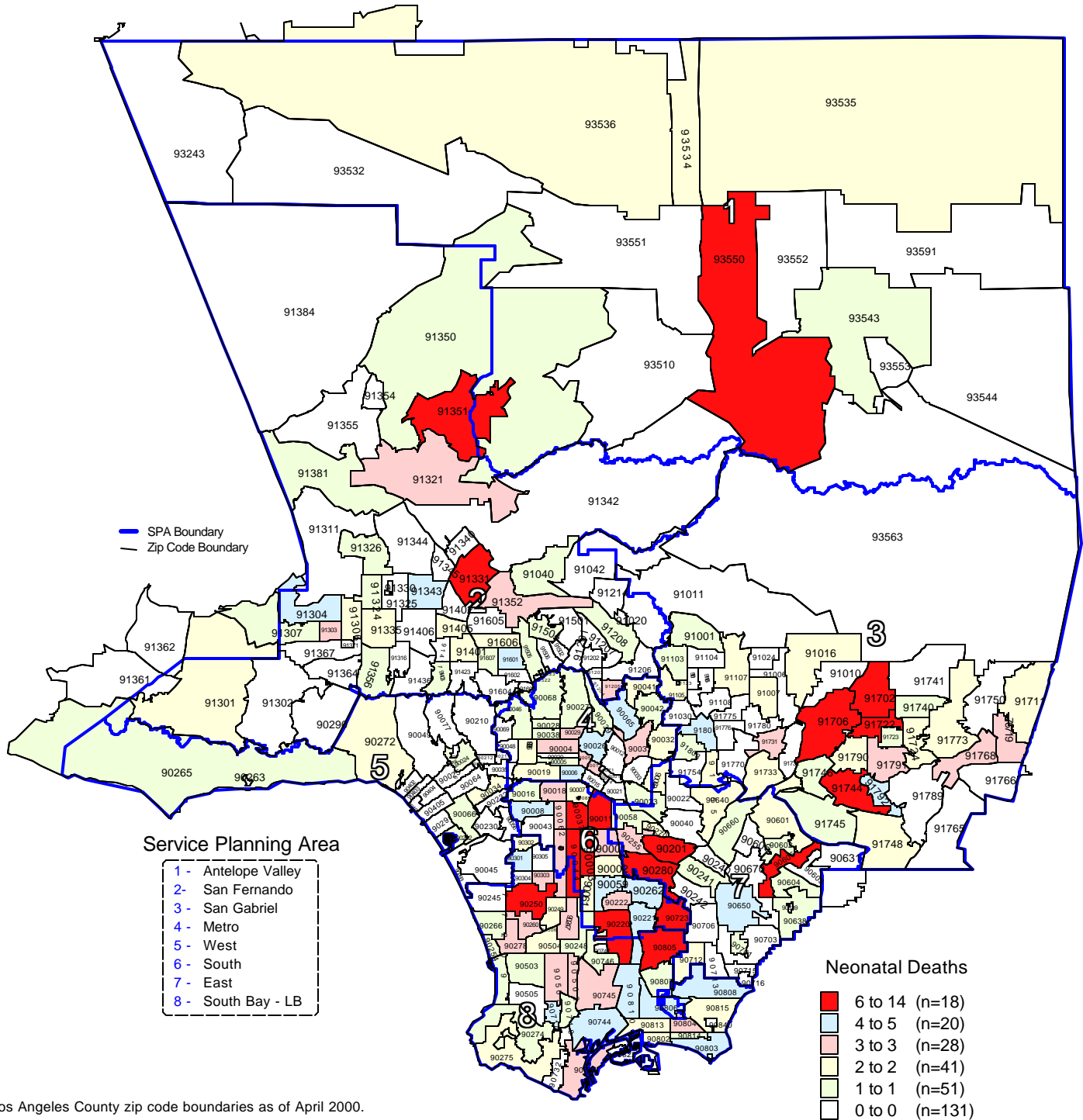
Year 2010 Objective: Reduce the neonatal mortality rate to no more than 2.9 per 1,000 live births.

Note: Neonatal mortality rate is defined as deaths less than 28 days per 1,000 live births

Source: California Department of Health Services, Center for Health Statistics, Vital Statistics, 2000

Los Angeles County - Department of Health Services
Number of Neonatal Deaths
by Zip Code* and Service Planning Area (SPA)

Los Angeles County, 2000



* Los Angeles County zip code boundaries as of April 2000.

Total Number of live births in Los Angeles County, 2000 = 157,391

Total Number of neonatal deaths in Los Angeles County, 2000 = 531

Note: Neonatal deaths are defined as deaths occurring less than 28 days

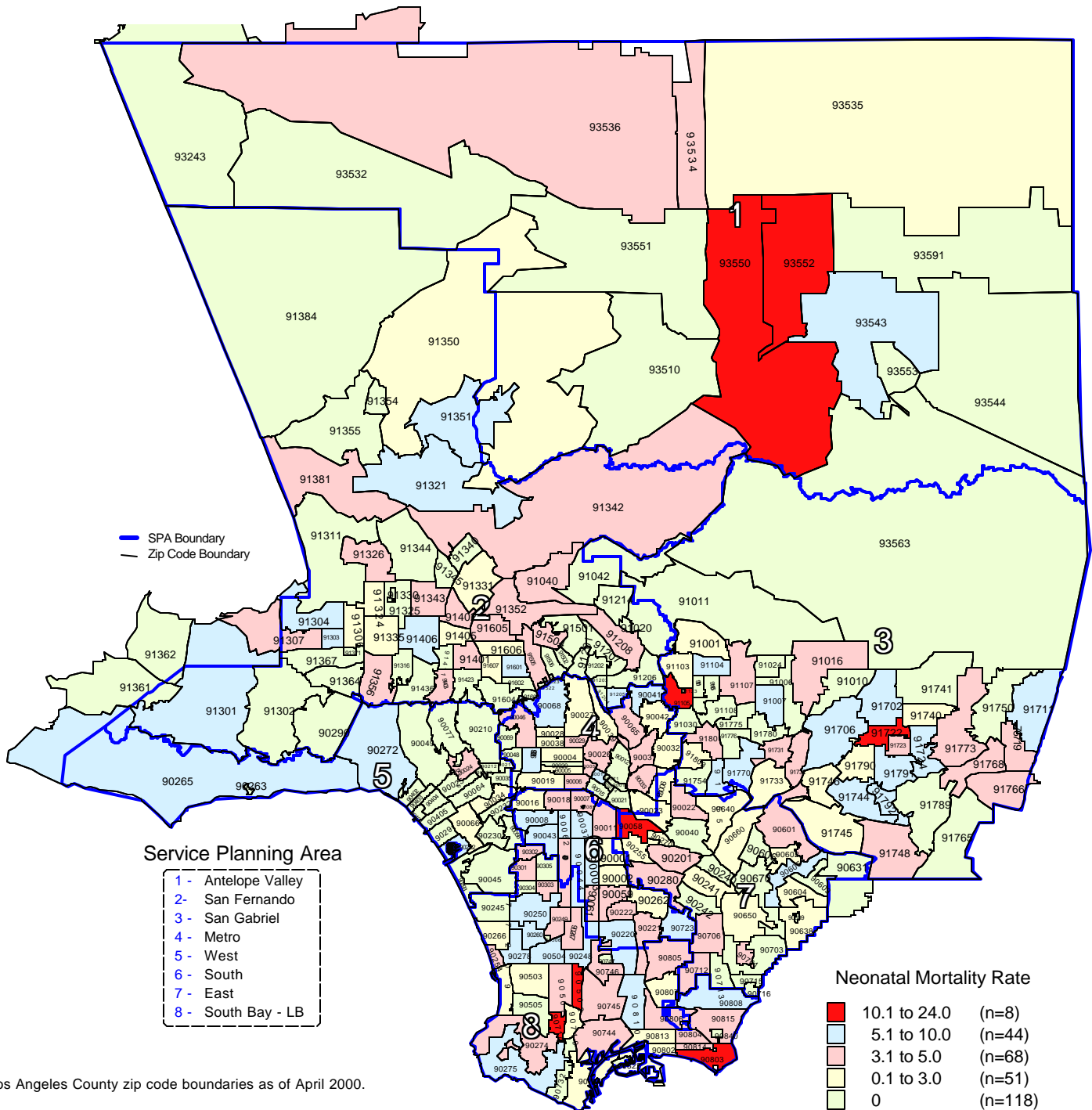
Source: California Department of Health Services

Center for Health Statistics, Vital Statistics, 2000

n = total number of zip codes in range

Neonatal Mortality Rate by Zip Code* and Service Planning Area (SPA)

Los Angeles County, 2000



* Los Angeles County zip code boundaries as of April 2000.

Total Number of live births in Los Angeles County, 2000 = 157,391
Total Number of neonatal deaths in Los Angeles County, 2000 = 531

Note: Neonatal mortality rate is defined as deaths occurring less than 28 days per 1,000 live births

Source: California Department of Health Services
Center for Health Statistics, Vital Statistics, 2000

n = total number of zip codes in range

TITLE V INDICATOR TEMPLATES

INDICATOR: Post-neonatal mortality

DEFINITION: The number of infant deaths per 1,000 live births occurring between 28 and 364 days of age

NUMERATOR: The number of infant deaths occurring at age 28 to 364 days of age, by place of residence, in a calendar year

DENOMINATOR: The total number of live births, by place of residence, in a calendar year

HEALTHY PEOPLE 2010 OBJECTIVE:

Reduce the post-neonatal mortality rate to no more than 1.2 per 1,000 live births. (Baseline: 2.4 in 1998) (Objective 16.1e)

RISK FACTORS: Congenital anomalies; injuries; infection in late pregnancy; family history of SIDS; maternal smoking or drug use; young maternal age (teen births); race/ethnicity (African American, American Indian, Puerto Rican)

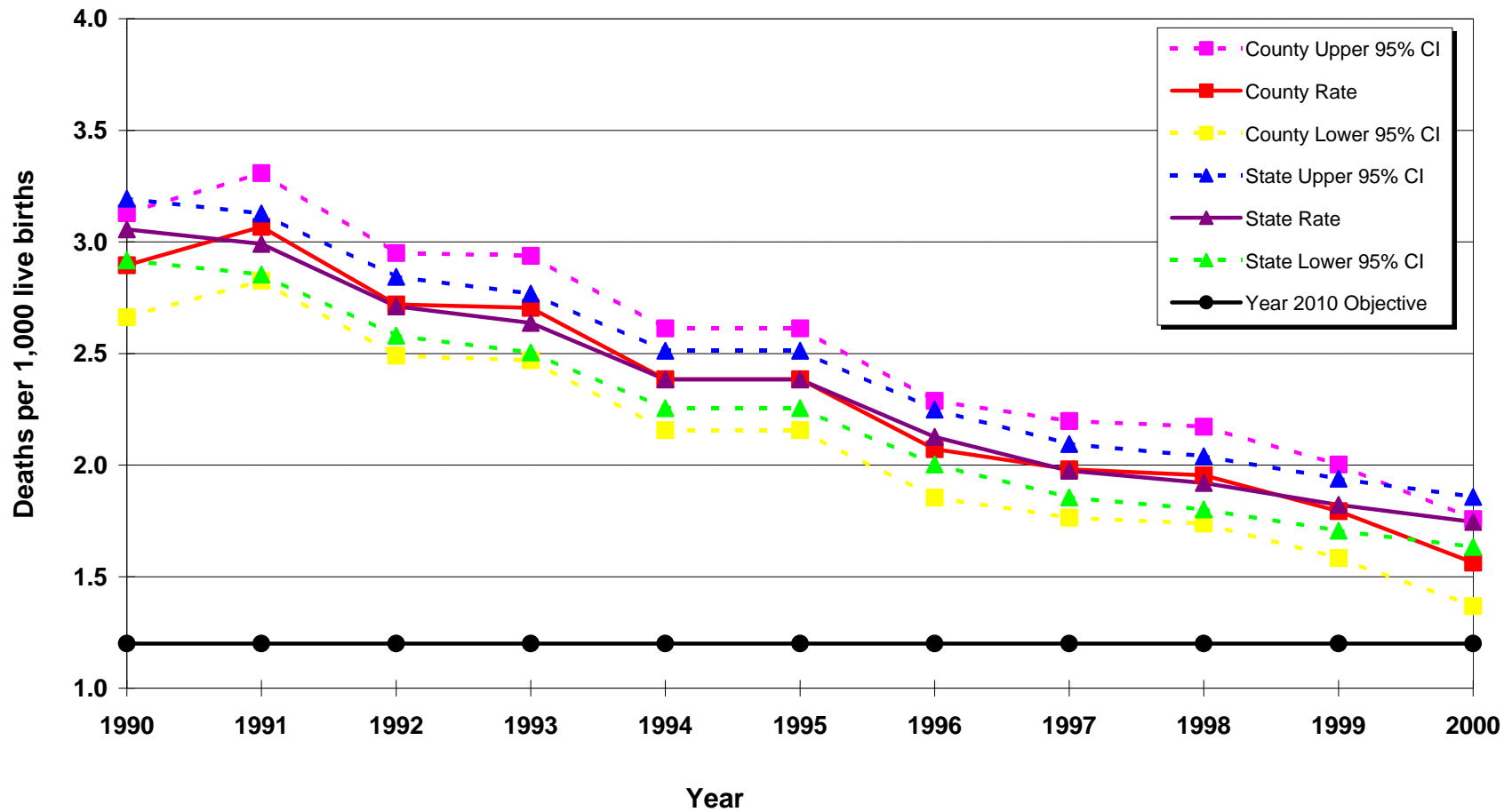
See also risk factors for infant mortality.

Year	California				LA County			
	Post-Neonatal Mortality		95% Confidence Interval		Post-Neonatal Mortality		95% Confidence Interval	
	Number	Rate	Lower	Upper	Number	Rate	Lower	Upper
1990	1,869	3.1	2.9	3.2	591	2.9	2.7	3.1
1991	1,822	3.0	2.9	3.1	622	3.1	2.8	3.3
1992	1,629	2.7	2.6	2.8	537	2.7	2.5	2.9
1993	1,541	2.6	2.5	2.8	513	2.7	2.5	2.9
1994	1,481	2.6	2.5	2.7	433	2.4	2.2	2.6
1995	1,314	2.4	2.3	2.5	417	2.4	2.2	2.6
1996	1,145	2.1	2.0	2.2	350	2.1	1.9	2.3
1997	1,035	2.0	1.9	2.1	321	2.0	1.8	2.2
1998	1,001	1.9	1.8	2.0	310	2.0	1.7	2.2
1999	944	1.8	1.7	1.9	280	1.8	1.6	2.0
2000	927	1.7	1.6	1.9	246	1.6	1.4	1.8

DENOMINATOR: Live Births	
California	LA County
611,666	204,124
609,228	202,737
600,838	197,415
584,483	189,706
567,034	180,394
551,226	174,862
538,628	168,973
524,174	162,036
521,265	158,604
518,073	156,153
531,285	157,391

Source: California Department of Health Services, Center for Health Statistics, Vital Statistics, 1990-2000

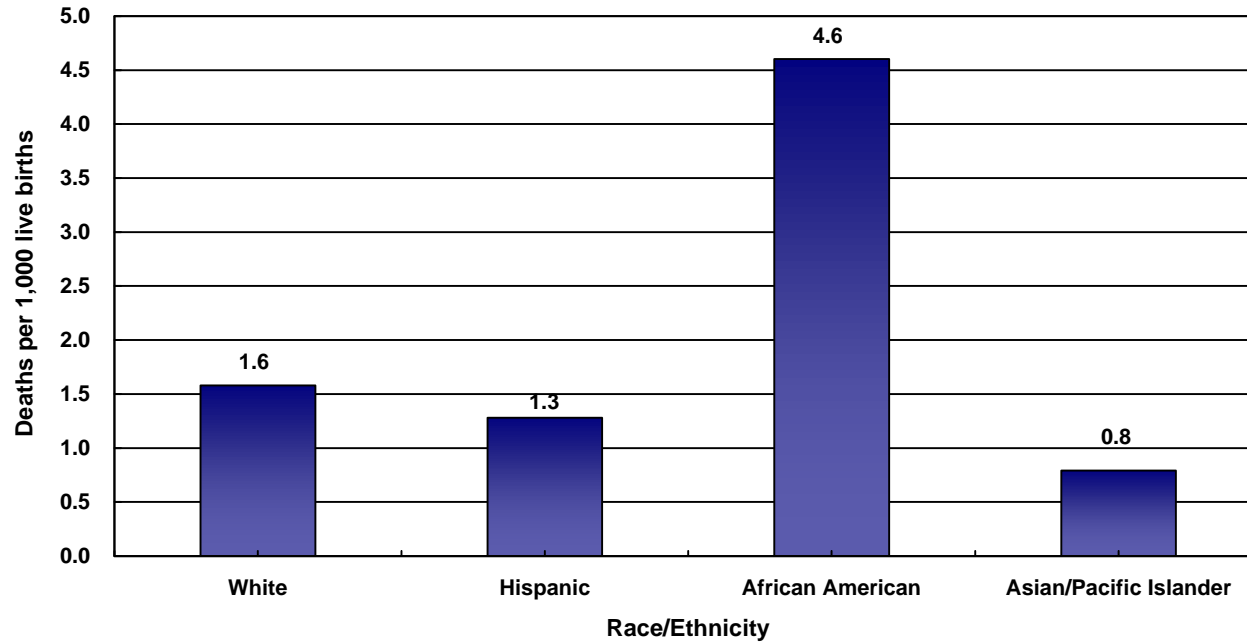
Post-Neonatal Deaths per 1,000 Live Births California vs. Los Angeles County, 1990 - 2000



Year 2010 Objective: Reduce the neonatal mortality rate to no more than 1.2 per 1,000 live births.

Source: California Department of Health Services, Center for Health Statistics, Vital Statistics, 1990-2000

Post-Neonatal Mortality Rate by Race/Ethnicity*
Los Angeles County, 2000



Los Angeles County, 2000				
Race/Ethnicity	Post-neonatal Mortality		95 % Confidence Interval	
	Number	Rate	Lower	Upper
White	46	1.6	1.1	2.0
Hispanic	125	1.3	1.1	1.5
African American	62	4.6	3.5	5.7
Asian/Pacific Islander	13	0.8	0.4	1.2
Native American	0	N/C**	N/C**	N/C**
Other/Unknown	0	N/C**	N/C**	N/C**
Total	246	1.6	1.4	1.8

Total Live Births
29,094
97,719
13,468
16,401
248
461
157,391

* White, African American, Asian, Native American and other race exclude Hispanic ethnicity
Hispanic includes any race category
Filipino is included in Asian
** Rates are not calculated if fewer than five deaths

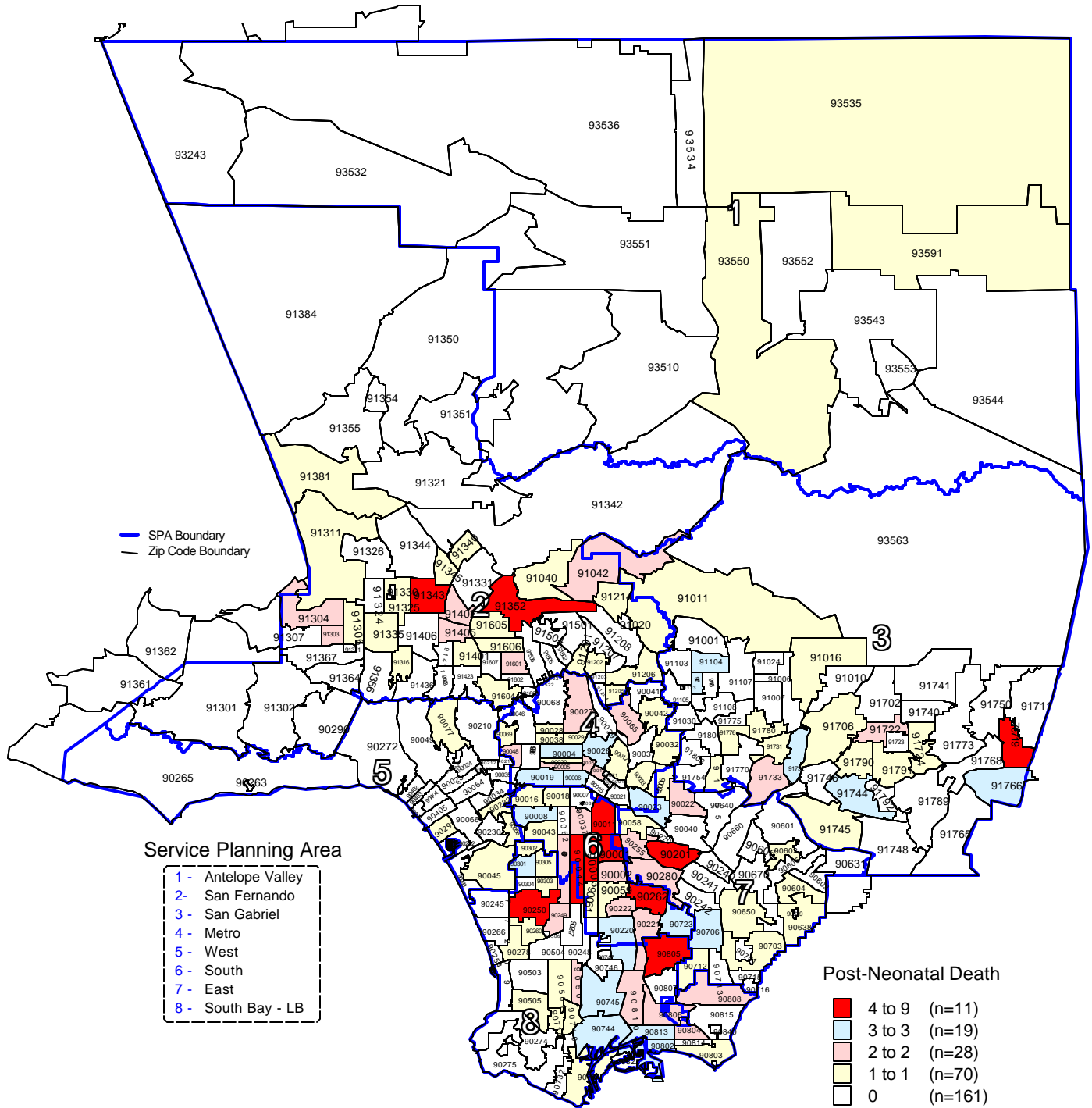
Year 2010 Objective: Reduce the post-neonatal mortality rate to no more than 1.2 per 1,000 live births.

Note: Post-neonatal mortality rate is defined as deaths occurring between ages 28 and 364 days per 1,000 live births

Source: California Department of Health Services, Center for Health Statistics, Vital Statistics, 2000

Los Angeles County - Department of Health Services
Number of Post-Neonatal Deaths
by Zip Code* and Service Planning Area (SPA)

Los Angeles County, 2000



* Los Angeles County zip code boundaries as of April 2000.

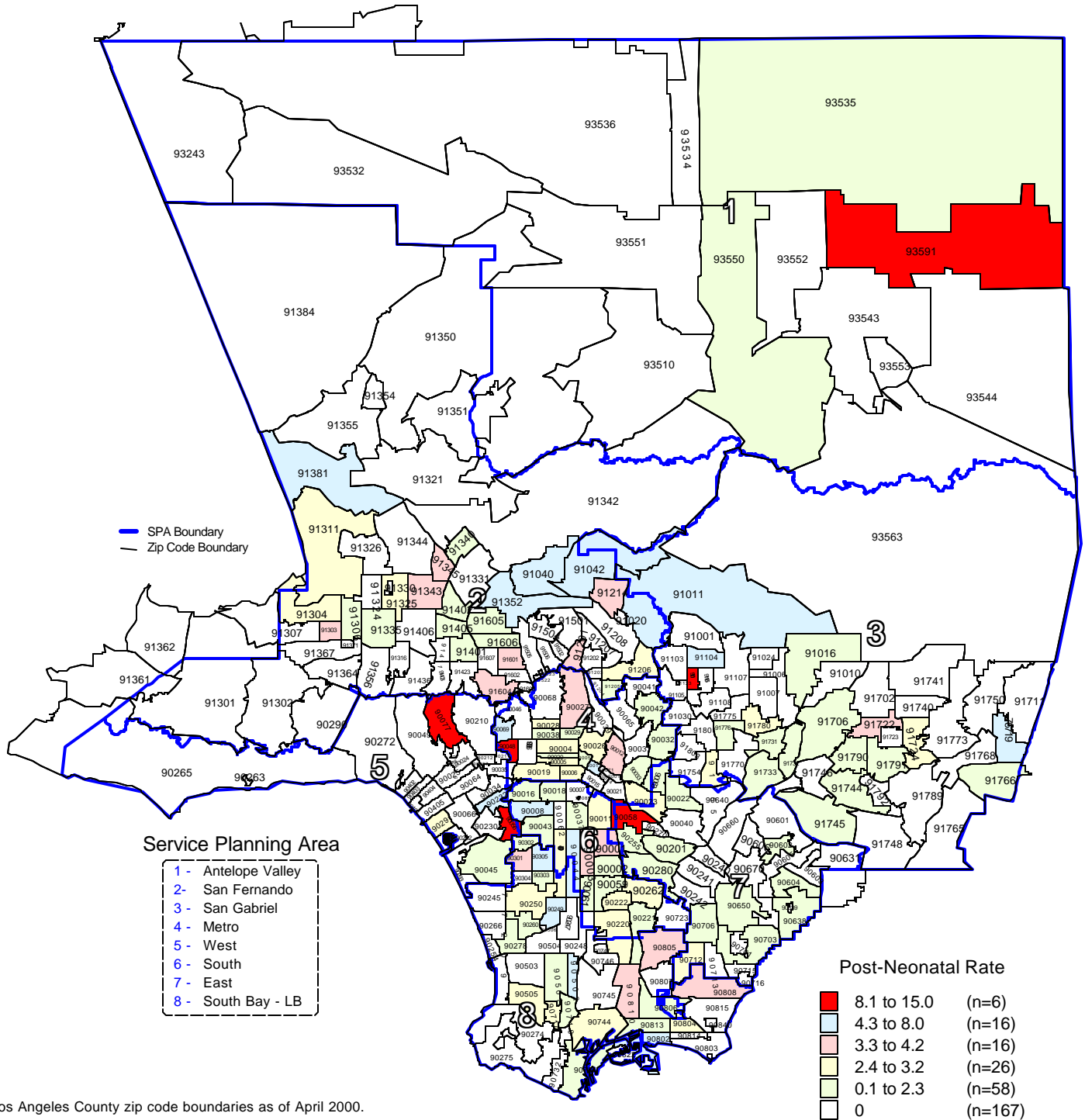
Total Number of live births in Los Angeles County, 2000 = 157,391
 Total Number of post-neonatal deaths in Los Angeles County, 2000 = 246
 Note: Post-neonatal deaths are defined as deaths occurring between 28 days and 365 days

Source: California Department of Health Services
 Center for Health Statistics, Vital Statistics, 2000

n = total number of zip codes in range

Los Angeles County - Department of Health Services
Post-Neonatal Mortality Rate
by Zip Code* and Service Planning Area (SPA)

Los Angeles County, 2000



* Los Angeles County zip code boundaries as of April 2000.

Total Number of live births in Los Angeles County, 2000 = 157,391

Total Number of post-neonatal deaths in Los Angeles County, 2000 = 246

Note: Post-neonatal deaths are defined as deaths occurring between 28 days and 365 days per 1,000 live births

Source: California Department of Health Services
 Center for Health Statistics, Vital Statistics, 2000

n = total number of zip codes in range