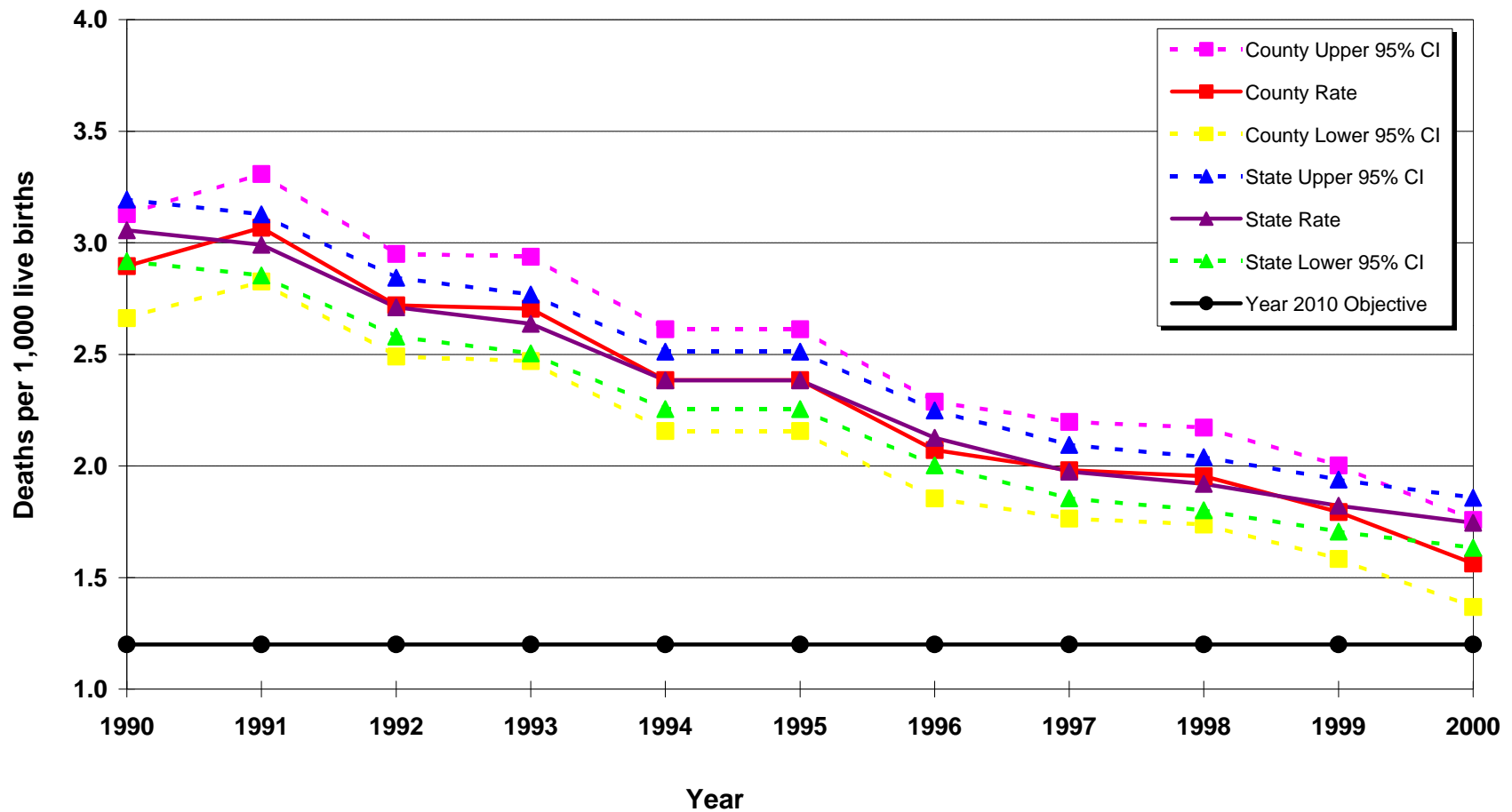


## Post-Neonatal Deaths per 1,000 Live Births California vs. Los Angeles County, 1990 - 2000



**Year 2010 Objective:** Reduce the neonatal mortality rate to no more than 1.2 per 1,000 live births.

**Source:** California Department of Health Services, Center for Health Statistics, Vital Statistics, 1990-2000