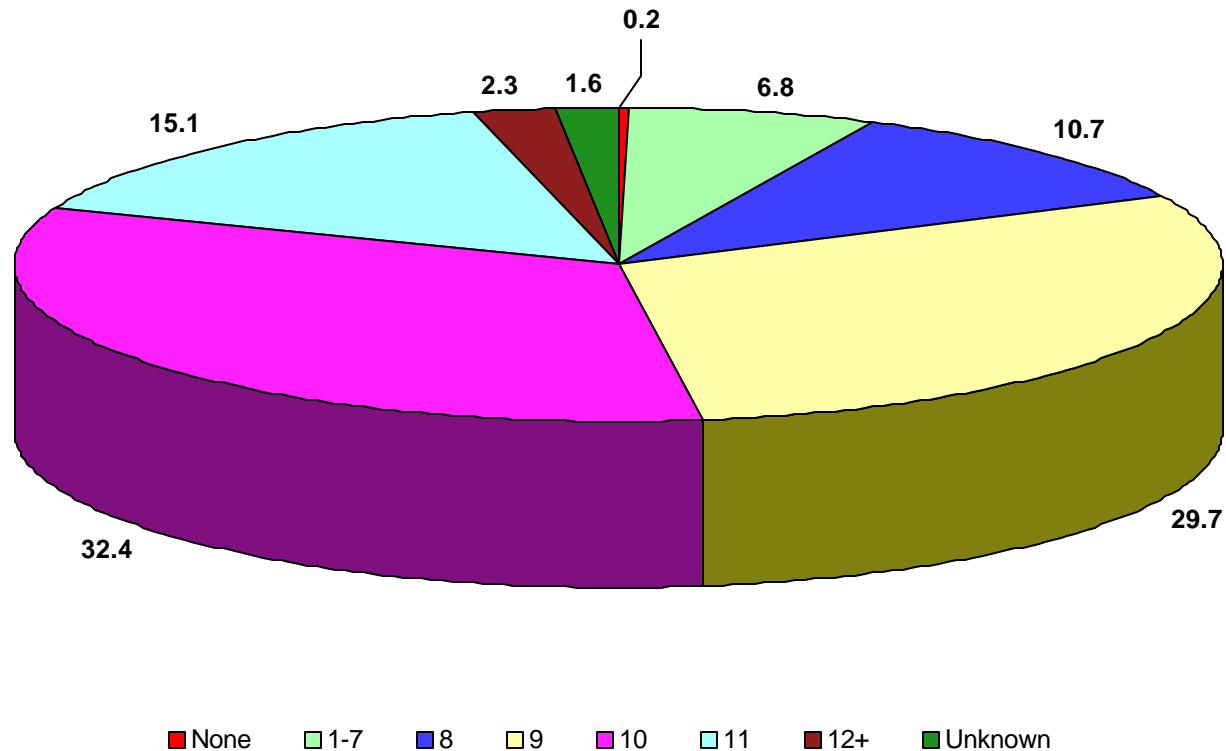


**Percent of Live Births to Mothers Less Than 17 Years Old
by Years of Education
Los Angeles County, 2000**



Years of Education															
None		1-7		8		9		10		11		12+		Unknown	
Number	Percent	Number	Percent	Number	Percent	Number	Percent	Number	Percent	Number	Percent	Number	Percent	Number	Percent
5	0.2	242	6.8	321	10.7	892	29.7	975	32.4	455	15.1	70	2.3	48	1.6

Note: Total live births to mothers less than 17 years old in Los Angeles County in 2000 was 3,008
Source: California Department of Health Services, Center for Health Statistics, Vital Statistics, 2000