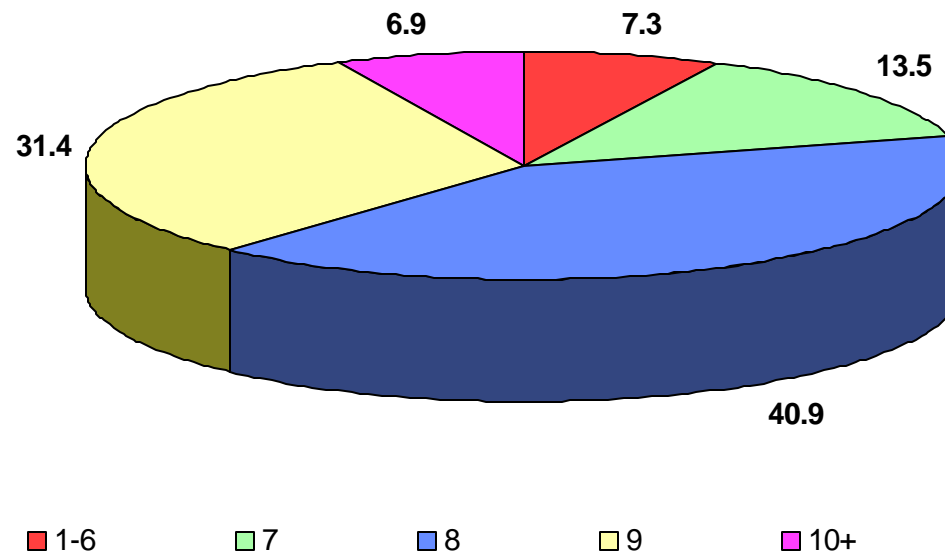


# **Percent of Live Births to Mothers Less Than 15 Years Old by Years of Education Los Angeles County, 2000**



Years of Education													
None		1-6		7		8		9		10 +		Unknown	
Number	Percent	Number	Percent	Number	Percent	Number	Percent	Number	Percent	Number	Percent	Number	Percent
0	0.0	20	7.3	37	13.5	112	40.9	86	31.4	19	6.9	0	0.0

**Note:** Total live births to mothers less than 15 years old in Los Angeles County in 2000 was 274  
**Source:** California Department of Health Services, Center for Health Statistics, Vital Statistics, 2000