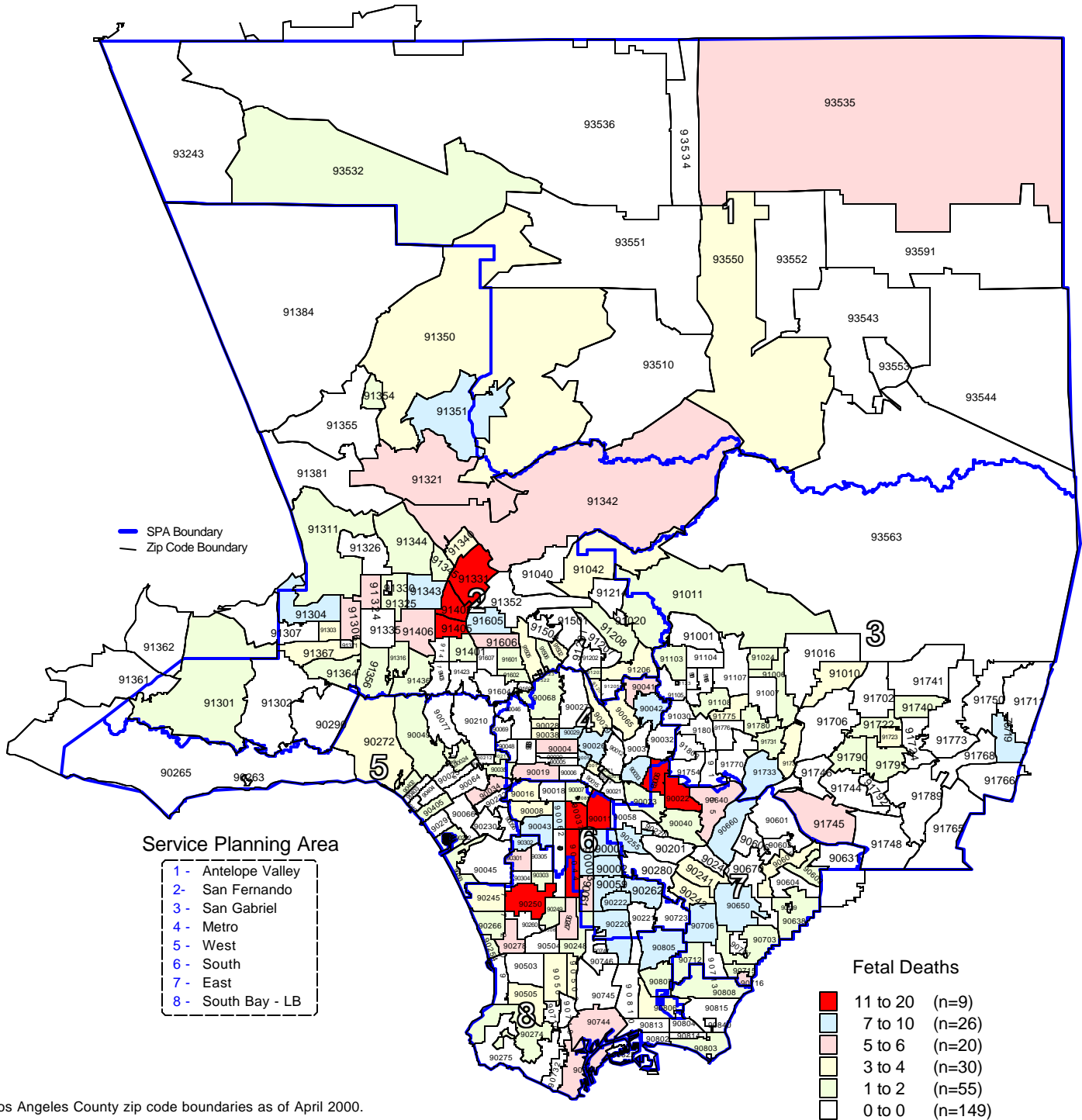


Los Angeles County - Department of Health Services
Number of Fetal Deaths
by Zip Code* and Service Planning Area (SPA)
 Los Angeles County, 2000



* Los Angeles County zip code boundaries as of April 2000.

Total Number of live births in Los Angeles County, 2000 = 157,391

Total Number of fetal deaths in Los Angeles County, 2000 = 864

Note: Fetal Deaths is defined as death occurring during 20 weeks or more gestational period

Source: California Department of Health Services
 Center for Health Statistics, Vital Statistics, 2000

n = total number of zip codes in range