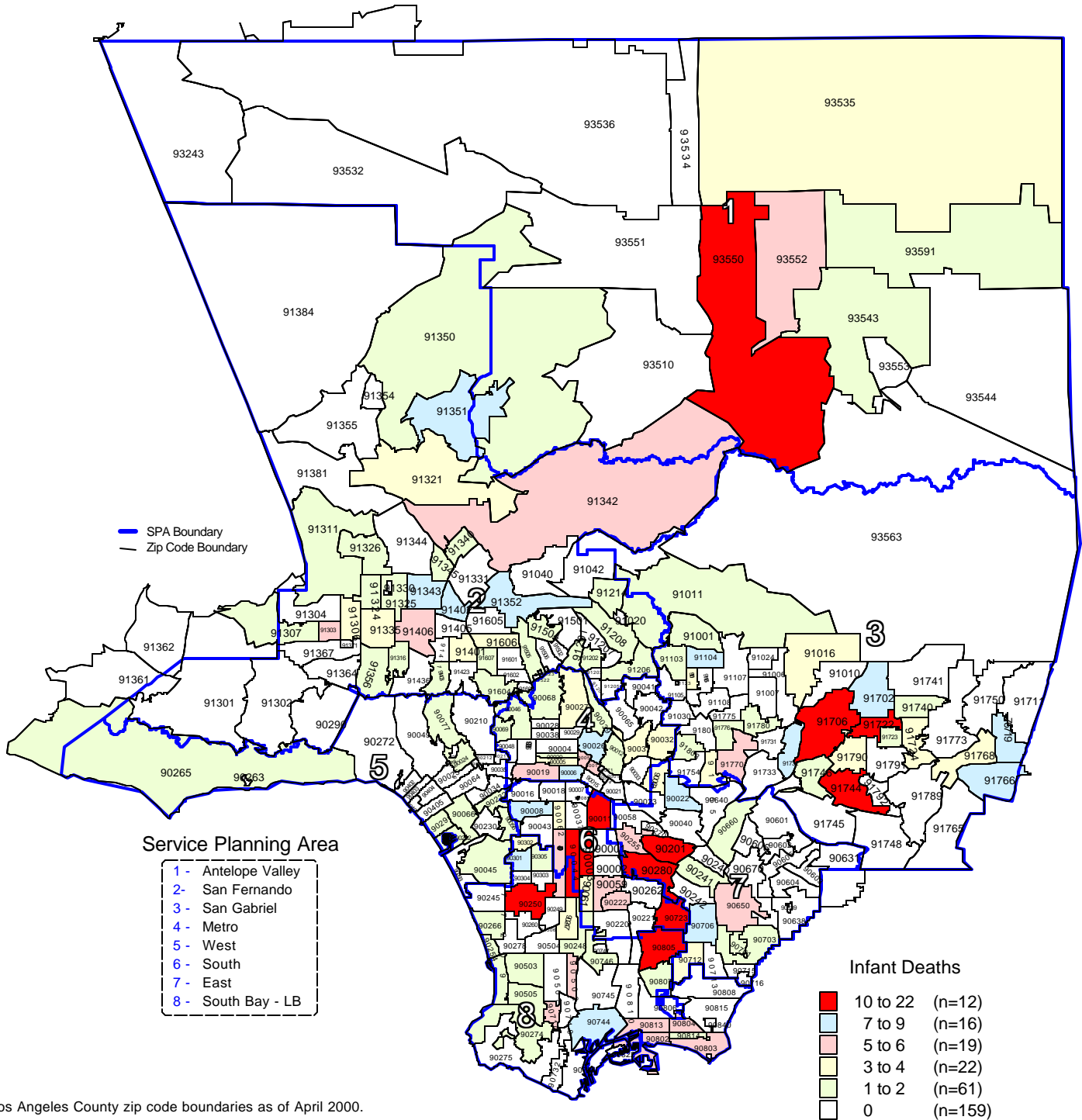


# Number of Infant Deaths by Zip Code\* and Service Planning Area (SPA)

Los Angeles County, 2000



\* Los Angeles County zip code boundaries as of April 2000.

Total Number of live births in Los Angeles County, 2000 = 157,391

Total Number of Infant deaths in Los Angeles County, 2000= 777

Note: Infant death is defined as death occurring at less than 365 days of age

Source: California Department of Health Services

Center for Health Statistics, Vital Statistics, 2000

n = total number of zip codes in range