

Fetal Mortality

TITLE V INDICATOR TEMPLATE

INDICATOR: Fetal Mortality Rate

DEFINITION: The number of fetal deaths occurring at 20 weeks or more gestation per 1,000 live births plus fetal deaths

NUMERATOR: The number of fetal deaths occurring at 20 weeks or more gestation, by place of residence, in a calendar year

DENOMINATOR: The total number of live births plus fetal deaths, by place of residence, in a calendar year

HEALTHY PEOPLE 2010 OBJECTIVE:

Reduce the fetal death rate (20 or more weeks of gestation) to no more than 4.1 per 1,000 live births plus fetal deaths. (Baseline: 6.8 per 1,000 live births plus fetal deaths in 1997) (Objective 16-1a)

RISK FACTORS:

Race/ethnicity (African American); maternal diabetes; pregnancy complications; maternal medical complications/chronic illness during pregnancy (including severe maternal infection); Rh sensitization; congenital anomalies; intrauterine cocaine exposure; maternal history of miscarriage

Year	California				LA County			
	Fetal Mortality		95 % Confidence Interval		Fetal Mortality		95 % Confidence Interval	
	Deaths	Rate	Lower	Upper	Deaths	Rate	Lower	Upper
1993	3,574	6.1	5.9	6.3	1,057	5.5	5.2	5.9
1994	3,299	5.8	5.6	6.0	1,018	5.6	5.3	6.0
1995	3,355	6.0	5.8	6.3	964	5.5	5.1	5.8
1996	3,330	6.1	5.9	6.4	1,024	6.0	5.7	6.4
1997	2,996	5.7	5.5	5.9	866	5.3	5.0	5.7
1998	3,053	5.8	5.6	6.0	821	5.1	4.8	5.5
1999	2,927	5.6	5.4	5.8	801	5.1	4.8	5.5
2000	3,046	5.7	5.5	5.9	864	5.5	5.1	5.8
2001	2,952	5.6	5.4	5.8	784	5.1	4.7	5.4
2002	2,649	5.0	4.8	5.2	740	4.9	4.5	5.2

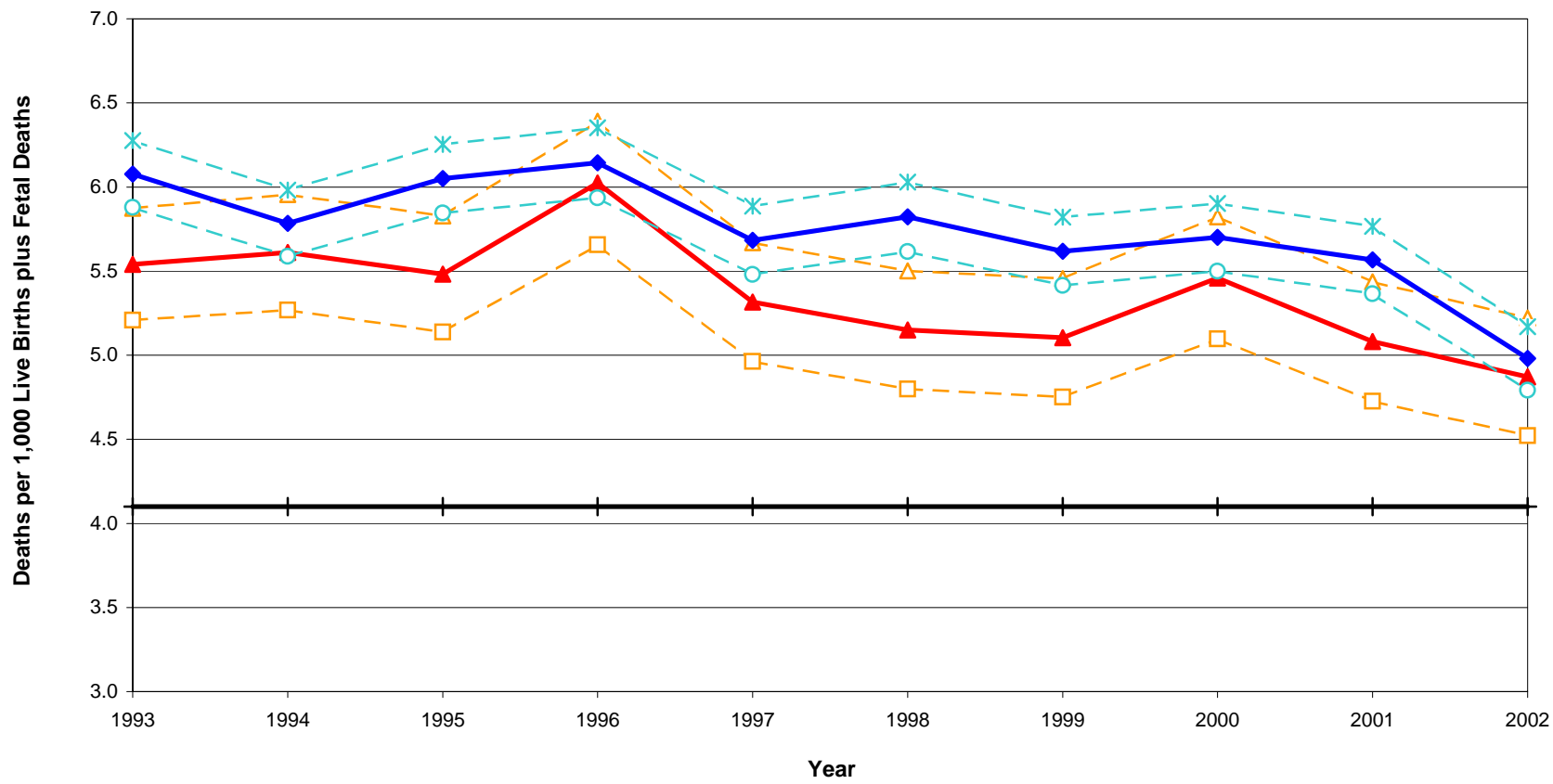
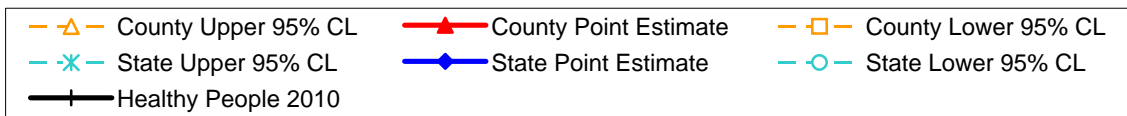
Denominator: Total Births		
Year	California	LA County
1993	588,057	190,763
1994	570,333	181,412
1995	554,581	175,826
1996	541,958	169,997
1997	527,170	162,902
1998	524,318	159,425
1999	521,000	156,954
2000	534,331	158,255
2001	530,323	154,307
2002	531,894	151,907

Note: Total Births = Live Births + Fetal Deaths.

For number of fetal deaths in Los Angeles County, records with missing gestational age are excluded. (n=73 in 2002)

Source: California Department of Health Services, Center for Health Statistics, Vital Statistics, 1993-2002.

Fetal Deaths per 1,000 Live Births plus Fetal Deaths California vs. Los Angeles County, 1993-2002

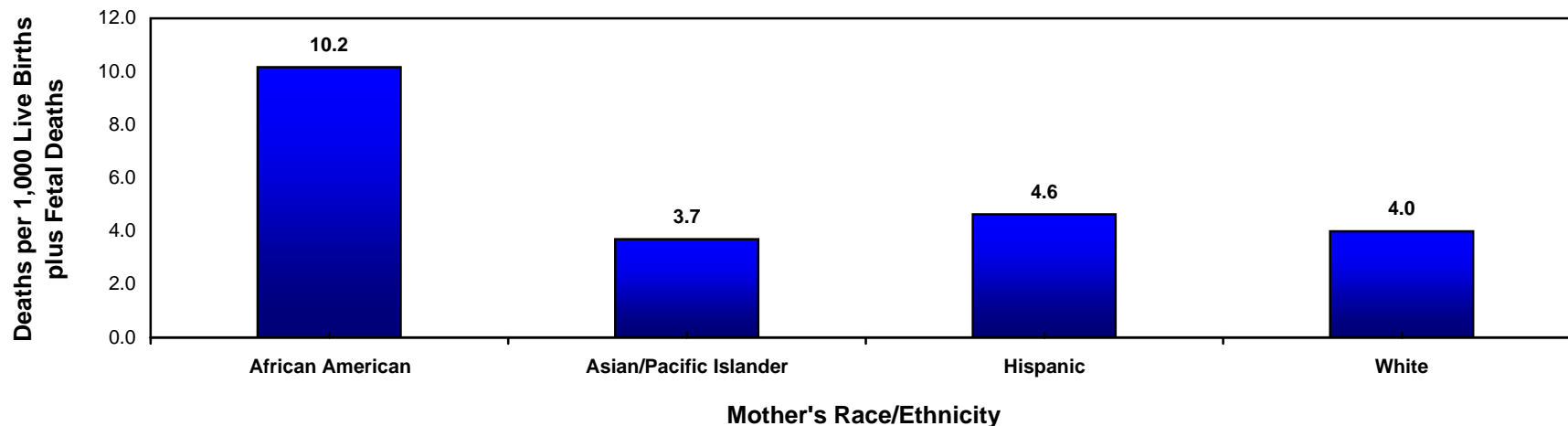


Year 2010 Objective: Reduce fetal mortality (20 or more weeks of gestation) rate to no more than 4.1 per 1,000 live births plus fetal deaths.

Note: For number of fetal deaths in Los Angeles County, records with missing gestational age are excluded. (n=73 in 2002)

Source: California Department of Health Services, Center for Health Statistics, Vital Statistics, 1993-2002.

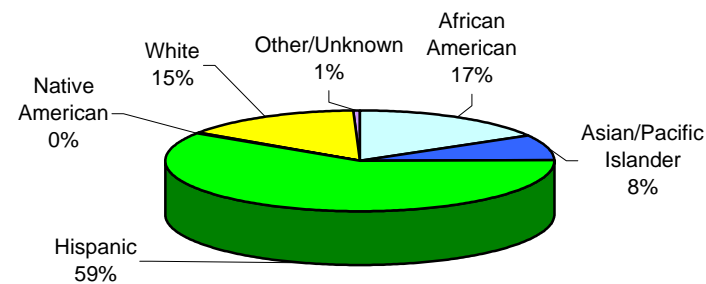
**Fetal Mortality Rate by Mother's Race/Ethnicity
Los Angeles County, 2002**



Los Angeles County, 2002				
Mother's Race/Ethnicity	Fetal Mortality		95% Confidence Interval	
	Deaths	Rate	Lower	Upper
African American	123	10.2	8.9	11.4
Asian/Pacific Islander	59	3.7	3.0	4.4
Hispanic	441	4.6	4.3	4.9
Native American	2	N/C	N/C	N/C
White	111	4.0	3.5	4.5
Other/Unknown	4	N/A	N/A	N/A
Total	740	4.9	4.6	5.1

Total Live Births plus Fetal Deaths
12,096
15,983
95,183
255
27,785
605
151,907

**Percent Distribution of Fetal Deaths by Mother's Race/Ethnicity
Los Angeles County, 2002**



Year 2010 Objective: Reduce fetal mortality (20 or more weeks of gestation) rate to no more than 4.1 per 1,000 live births plus fetal deaths.

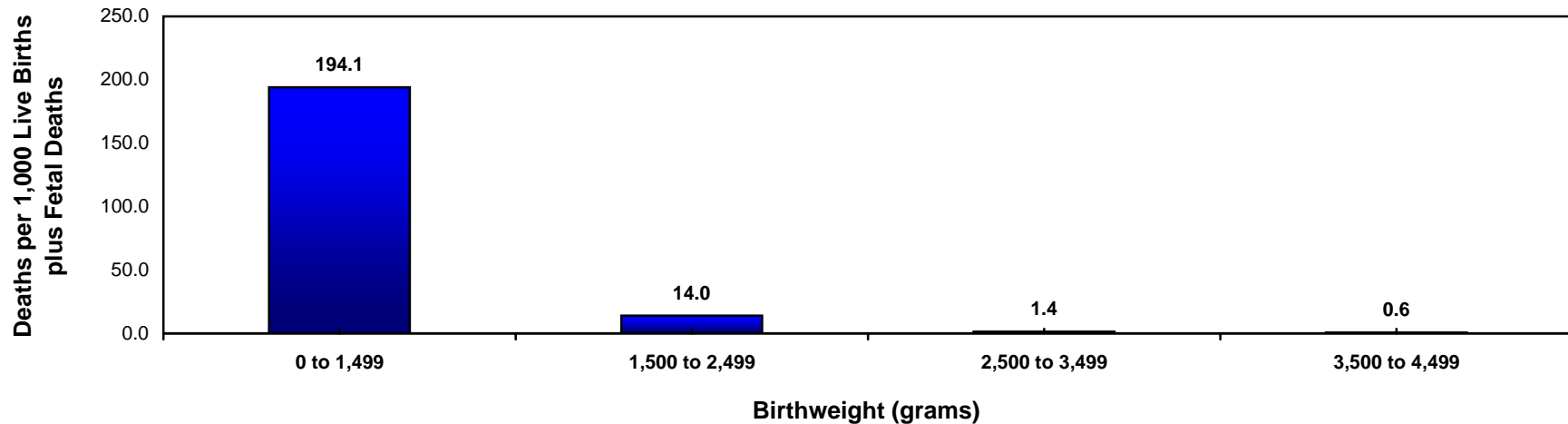
Note: Fetal mortality rate is defined as deaths occurring at 20 weeks or more gestation per 1,000 live births plus fetal deaths.

African American, Asian/Pacific Islander, Native American, White and other races exclude Hispanic ethnicity. Hispanic includes any race category.

Rates are not calculated (N/C) if fewer than five deaths. Rates are not applicable (N/A) in the "Unknown" category.

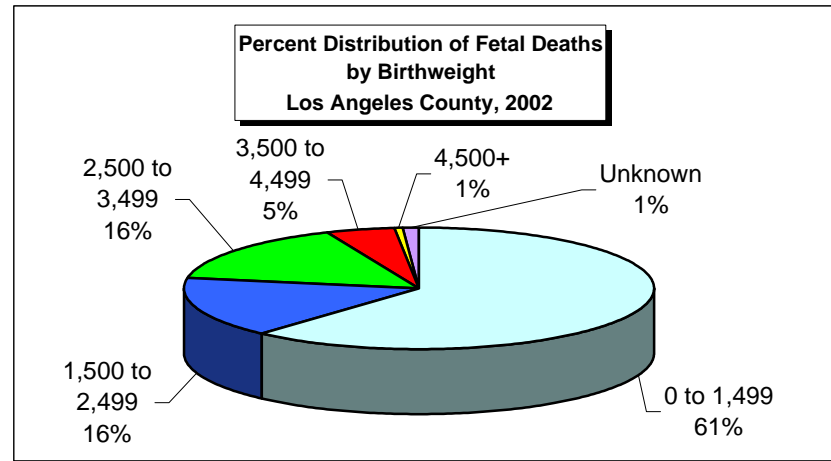
Source: California Department of Health Services, Center for Health Statistics, Vital Statistics, 2002.

Fetal Mortality Rate by Birthweight Los Angeles County, 2002



Los Angeles County, 2002				
Birthweight (grams)	Fetal Mortality		95% Confidence Interval	
	Deaths	Rate	Lower	Upper
0 to 1,499	457	194.1	182.2	205.9
1,500 to 2,499	118	14.0	12.2	15.8
2,500 to 3,499	118	1.4	1.2	1.6
3,500 to 4,499	35	0.6	0.5	0.8
4,500+	4	N/C	N/C	N/C
Unknown	8	N/A	N/A	N/A
Total	740	4.9	4.6	5.1

Total Live Births plus Fetal Deaths
2,355
8,442
84,490
54,613
1,995
12
151,907



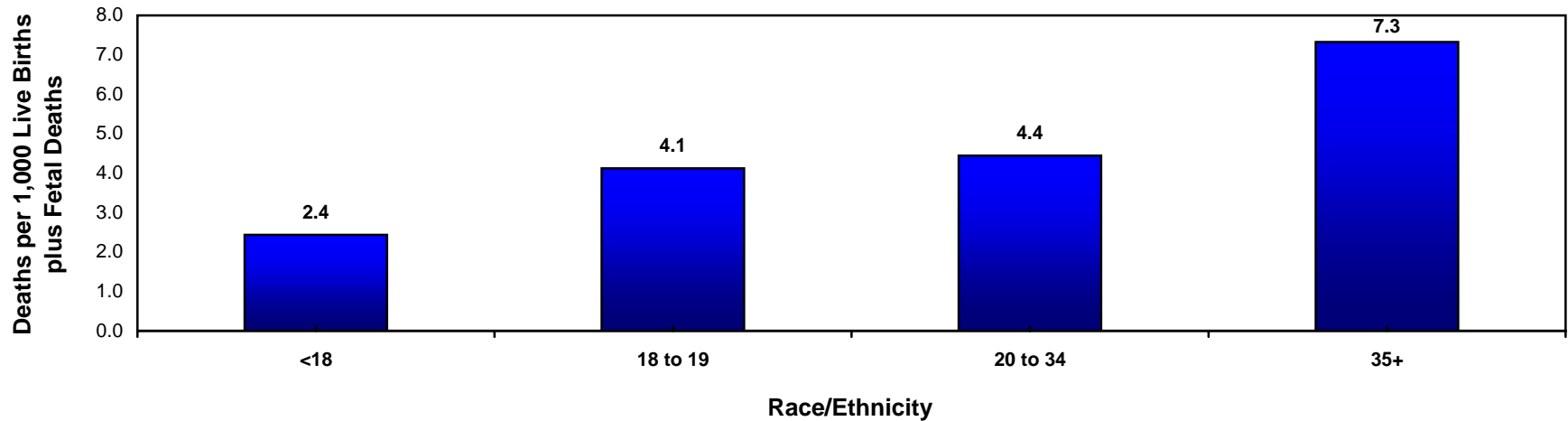
Year 2010 Objective: Reduce fetal mortality (20 or more weeks of gestation) rate to no more than 4.1 per 1,000 live births plus fetal deaths.

Note: Fetal mortality rate is defined as deaths occurring at 20 weeks or more gestation per 1,000 live births plus fetal deaths.

Rates are not calculated (N/C) if fewer than five deaths. Rates are not applicable (N/A) in the "Unknown" category.

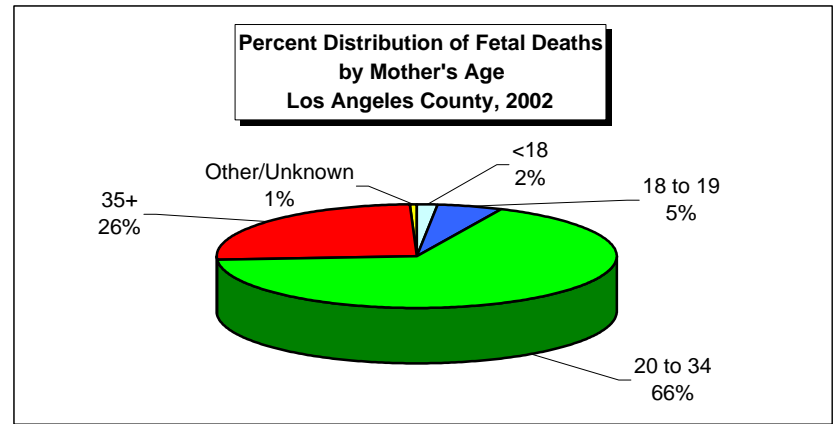
Source: California Department of Health Services, Center for Health Statistics, Vital Statistics, 2002.

**Fetal Mortality Rate by Mother's Age
Los Angeles County, 2002**



Los Angeles County, 2002				
Mother's Age	Fetal Mortality		95% Confidence Interval	
	Deaths	Rate	Lower	Upper
<18	13	2.4	1.5	3.4
18 to 19	39	4.1	3.2	5.0
20 to 34	494	4.4	4.2	4.7
35+	190	7.3	6.6	8.1
Other/Unknown	4	N/A	N/A	N/A
Total	740	4.9	4.6	5.1

Total Live Births plus Fetal Deaths
5,342
9,468
111,135
25,939
23
151,907



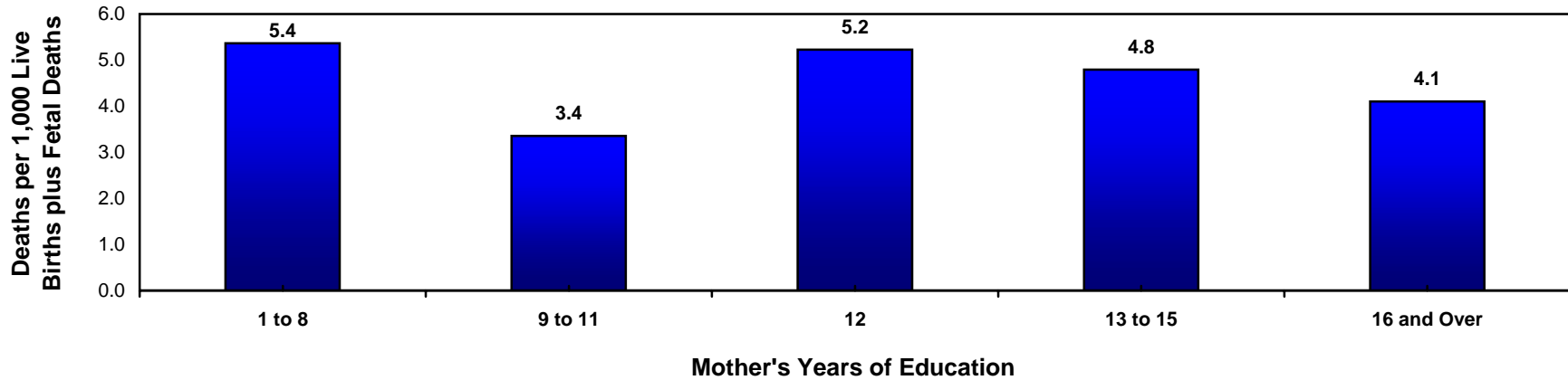
Year 2010 Objective: Reduce fetal mortality (20 or more weeks of gestation) rate to no more than 4.1 per 1,000 live births plus fetal deaths.

Note: Fetal mortality rate is defined as deaths occurring at 20 weeks or more gestation per 1,000 live births plus fetal deaths.

Rates are not calculated (N/C) if fewer than five deaths. Rates are not applicable (N/A) in the "Unknown" category.

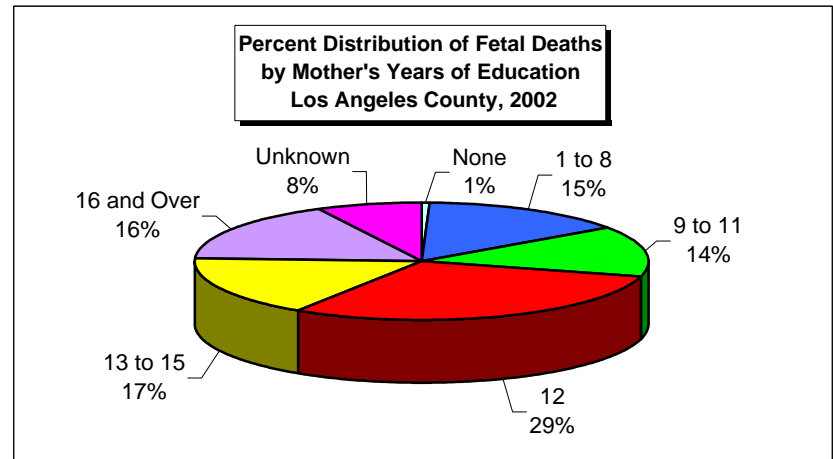
Source: California Department of Health Services, Center for Health Statistics, Vital Statistics, 2002.

Fetal Mortality Rate by Mother's Years of Education Los Angeles County, 2002



Los Angeles County, 2002				
Mother's Years of Education	Fetal Mortality		95% Confidence Interval	
	Deaths	Rate	Lower	Upper
None	5	11.3	4.3	18.3
1 to 8	109	5.4	4.7	6.1
9 to 11	102	3.4	2.9	3.8
12	222	5.2	4.7	5.7
13 to 15	124	4.8	4.2	5.4
16 and Over	122	4.1	3.6	4.6
Unknown	56	21.3	17.4	25.2
Total	740	4.9	4.6	5.1

Total Live Births plus Fetal Deaths
442
20,313
30,431
42,474
25,861
29,759
2,627
151,907



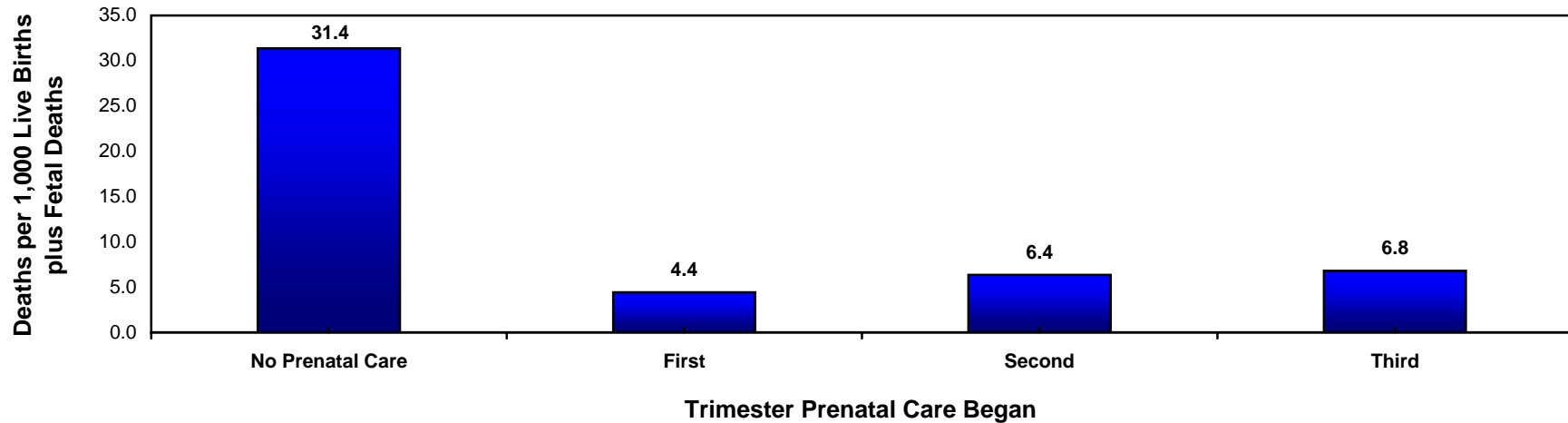
Year 2010 Objective: Reduce fetal mortality (20 or more weeks of gestation) rate to no more than 4.1 per 1,000 live births plus fetal deaths.

Note: Fetal mortality rate is defined as deaths occurring at 20 weeks or more gestation per 1,000 live births plus fetal deaths.

This analysis did not adjust for teen mothers who may not be old enough to have reached higher categorical educational level.

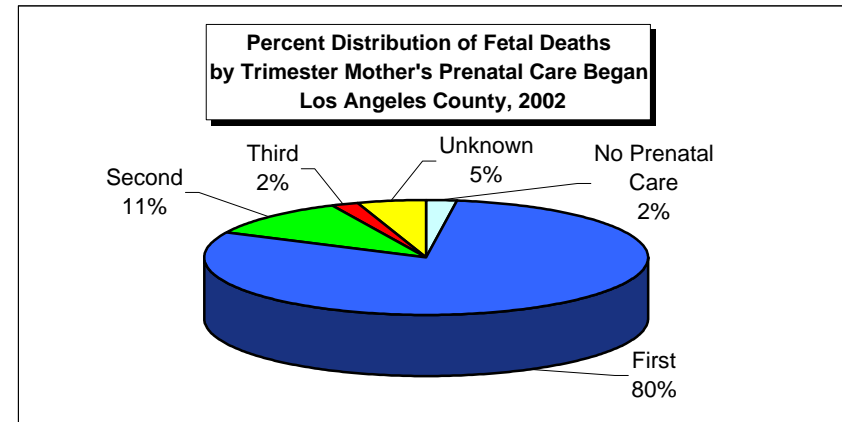
Source: California Department of Health Services, Center for Health Statistics, Vital Statistics, 2002.

**Fetal Mortality Rate by Mother's Trimester Prenatal Care (PNC) Began
Los Angeles County, 2002**



Los Angeles County, 2002				
Trimester Prenatal Care Began	Fetal Mortality		95% Confidence Interval	
	Deaths	Rate	Lower	Upper
No Prenatal Care	17	31.4	20.9	41.8
First	591	4.4	4.2	4.7
Second	80	6.4	5.4	7.3
Third	15	6.8	4.4	9.2
Unknown	37	10.6	8.2	13.0
Total	740	4.9	4.6	5.1

Total Live Births plus Fetal Deaths
542
133,084
12,597
2,204
3,480
151,907



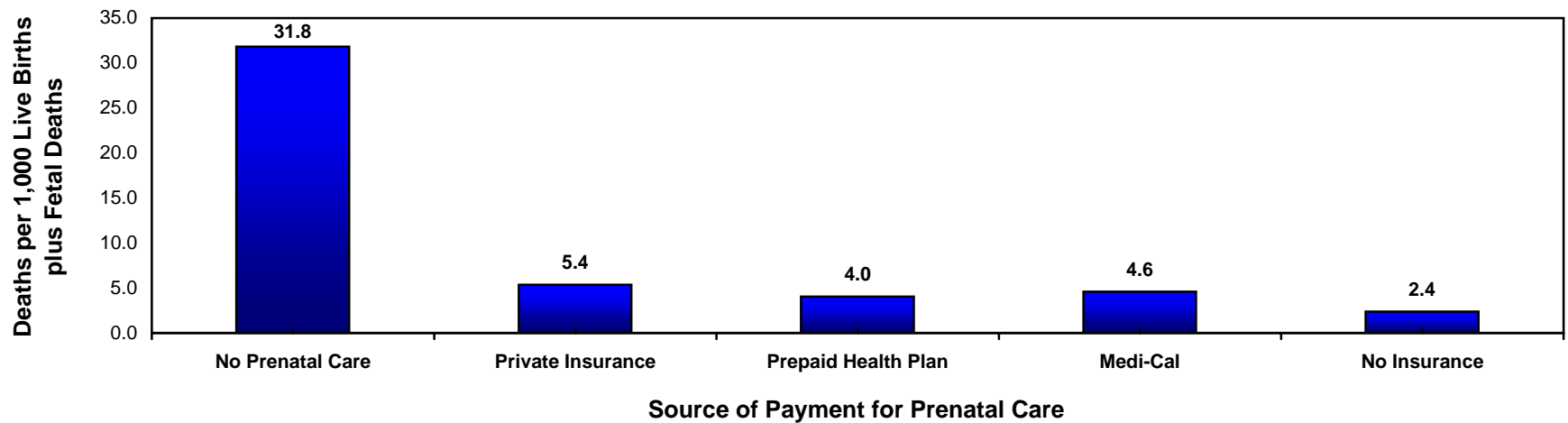
Year 2010 Objective: Reduce fetal mortality (20 or more weeks of gestation) rate to no more than 4.1 per 1,000 live births plus fetal deaths.

Note: Fetal mortality rate is defined as deaths occurring at 20 weeks or more gestation per 1,000 live births plus fetal deaths.

"Trimester Prenatal Care (PNC) Began" excludes the prenatal care experiences of all women whose pregnancies did not result in a live birth.

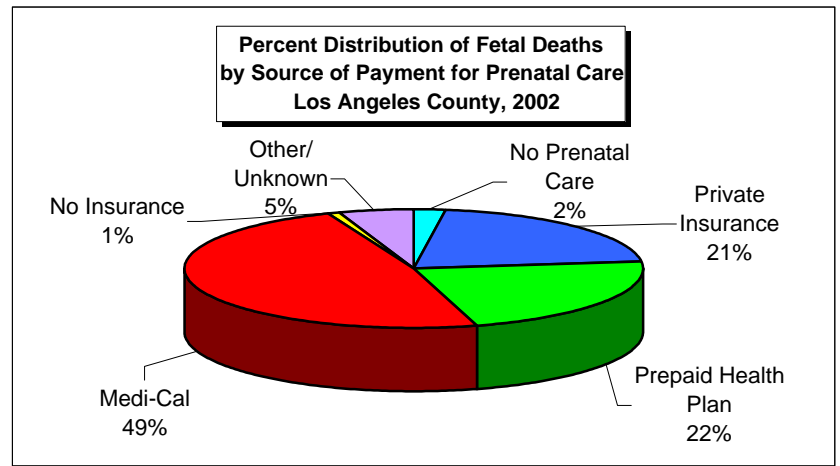
Source: California Department of Health Services, Center for Health Statistics, Vital Statistics, 2002.

**Fetal Mortality Rate by Source of Payment for Prenatal Care (PNC)
Los Angeles County, 2002**



Los Angeles County, 2002				
Source of Payment for Prenatal Care	Fetal Mortality		95% Confidence Interval	
	Deaths	Rate	Lower	Upper
No Prenatal Care	17	31.8	21.2	42.4
Private Insurance	154	5.4	4.8	6.0
Prepaid Health Plan	166	4.0	3.6	4.5
Medi-Cal	357	4.6	4.2	4.9
No Insurance	6	2.4	1.0	3.7
Other/Unknown	40	35.7	27.9	43.4
Total	740	4.9	4.6	5.1

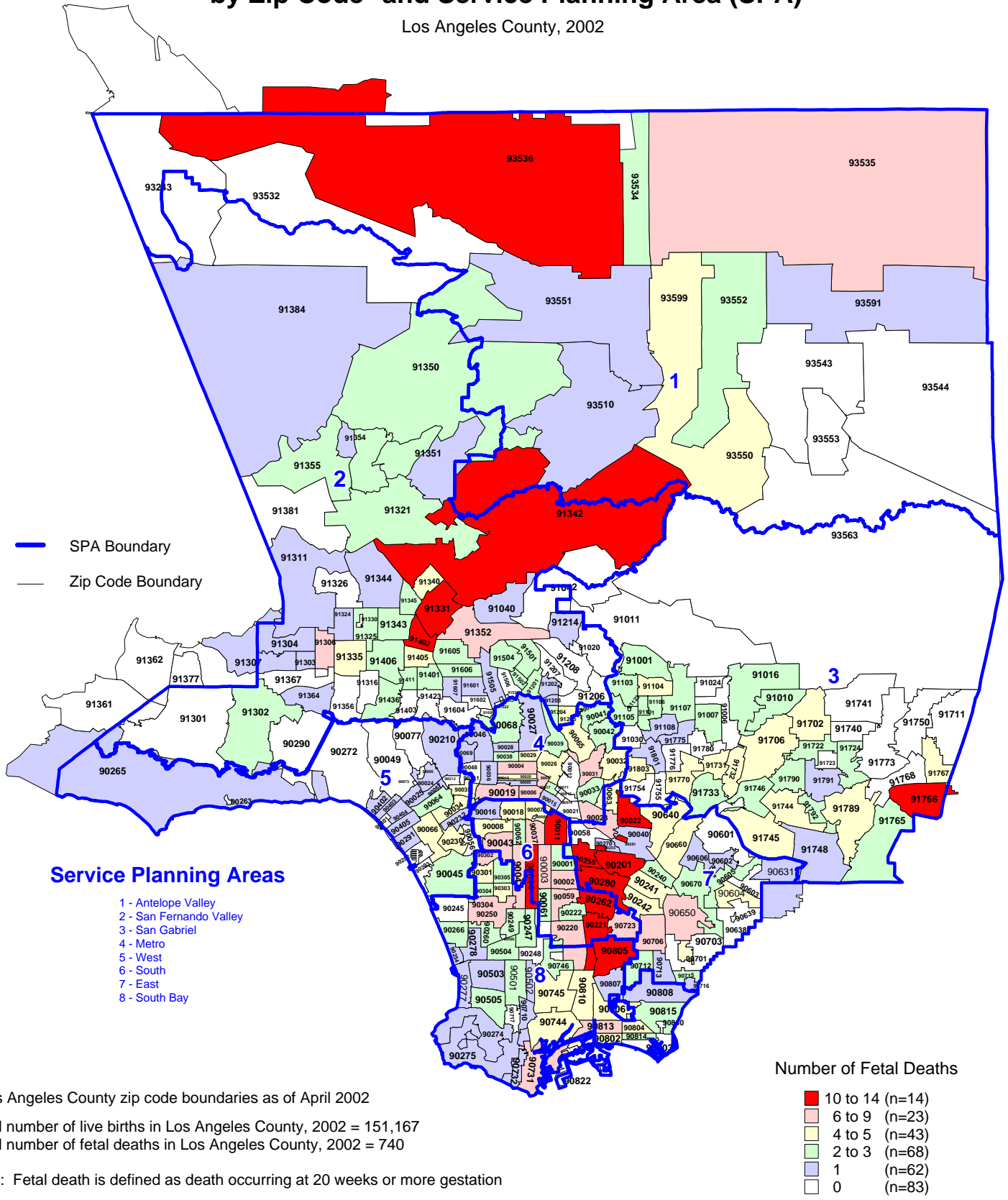
Total Live Births plus Fetal Deaths
534
28,704
41,142
77,875
2,530
1,122
151,907



Year 2010 Objective: Reduce fetal mortality (20 or more weeks of gestation) rate to no more than 4.1 per 1,000 live births plus fetal deaths.
 Note: Fetal mortality rate is defined as deaths occurring at 20 weeks or more gestation per 1,000 live births plus fetal deaths.
 Source: California Department of Health Services, Center for Health Statistics, Vital Statistics, 2002.

Number of Fetal Deaths by Zip Code* and Service Planning Area (SPA)

Los Angeles County, 2002



* Los Angeles County zip code boundaries as of April 2002

Total number of live births in Los Angeles County, 2002 = 151,167

Total number of fetal deaths in Los Angeles County, 2002 = 740

Note: Fetal death is defined as death occurring at 20 weeks or more gestation

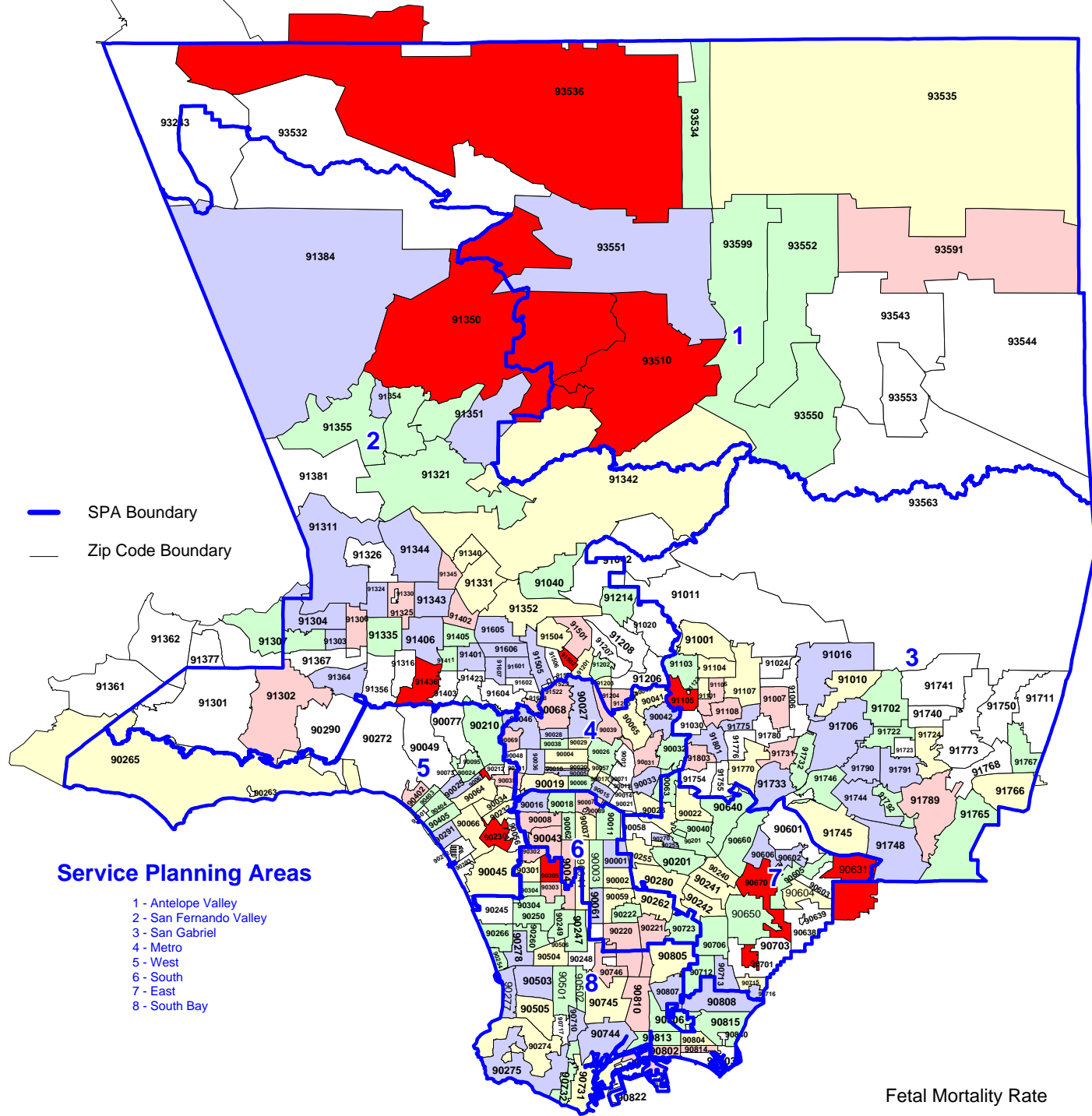
Source: California Department of Health Services,
Center for Health Statistics, Vital Statistics, 2002



n = total number of zip codes in range

Fetal Mortality Rate by Zip Code* and Service Planning Area (SPA)

Los Angeles County, 2002



* Los Angeles County zip code boundaries as of April 2002

Total number of live births in Los Angeles County, 2002 = 151,167

Total number of fetal deaths in Los Angeles County, 2002 = 740

Note: Fetal mortality rate is defined as death occurring at 20 weeks or more gestation per 1,000 live births plus fetal deaths

Source: California Department of Health Services, Center for Health Statistics, Vital Statistics, 2002

n = total number of zip codes in range