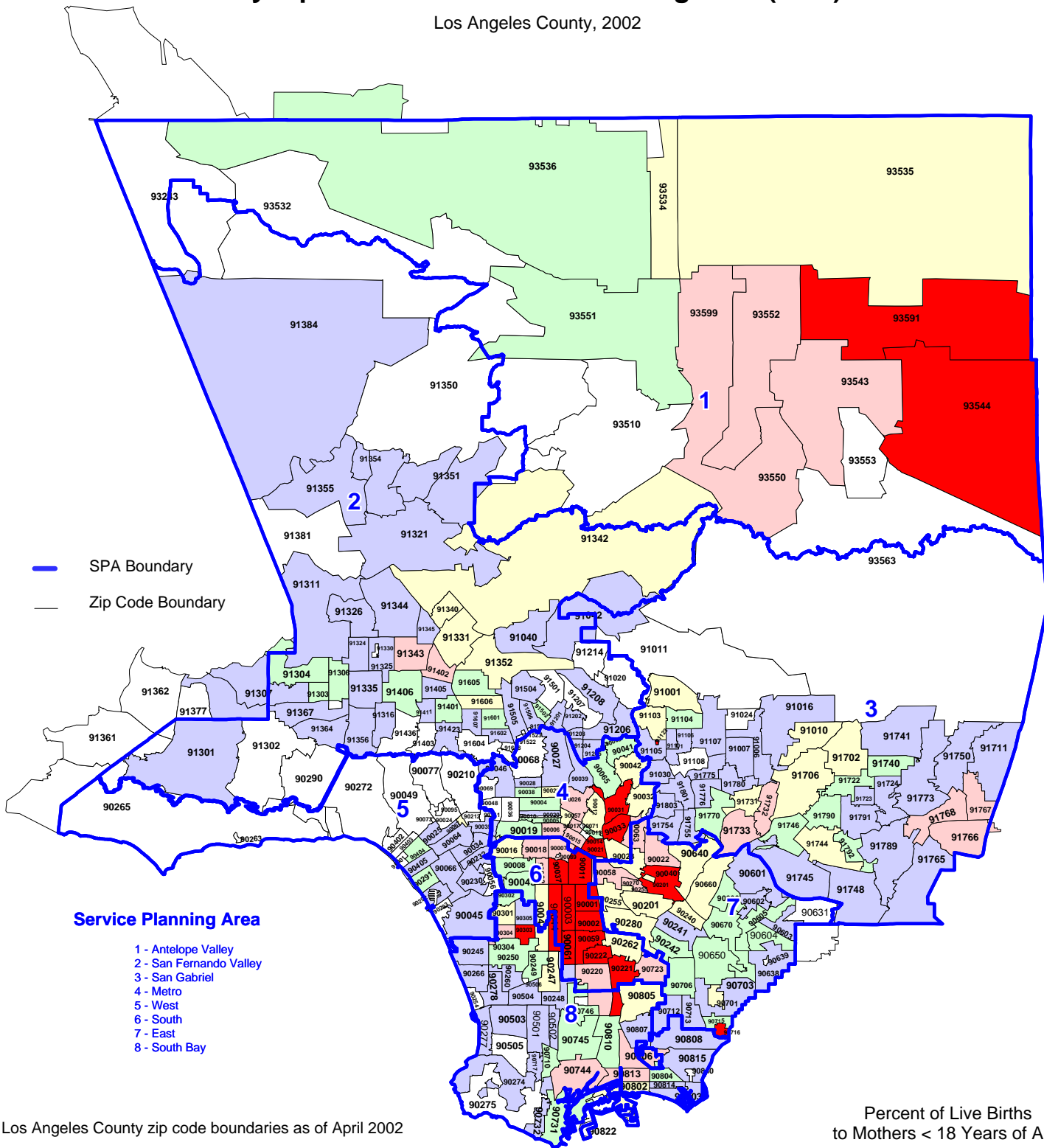


# Percent of Live Births to Mothers Less Than 18 Years of Age by Zip Code\* and Service Planning Area (SPA)

Los Angeles County, 2002



**Service Planning Area**

- 1 - Antelope Valley
- 2 - San Fernando Valley
- 3 - San Gabriel
- 4 - Metro
- 5 - West
- 6 - South
- 7 - East
- 8 - South Bay

\* Los Angeles County zip code boundaries as of April 2002

Total number of live births in Los Angeles County, 2002 = 151,167

Source: California Department of Health Services  
Center for Health Statistics, Vital Statistics, 2002

Percent of Live Births to Mothers < 18 Years of Age

- 6.30 to 9.90 (n=19)
- 4.70 to 6.29 (n=27)
- 3.70 to 4.69 (n=35)
- 2.60 to 3.69 (n=45)
- 0.10 to 2.59 (n=106)
- <0.10 (n=61)

n = total number of zip codes in range