

# Overview



## Communicable Disease Prevention and Control

**Department of Public Health  
County of Los Angeles**

*For further information contact:*

**Robert Kim-Farley, MD, MPH  
Director**

**Communicable Disease Control and Prevention  
313 N. Figueroa Street, Room 227C  
Los Angeles, CA 90012**

**Telephone: (213) 989-7161  
Email: [rkimfarley@ph.lacounty.gov](mailto:rkimfarley@ph.lacounty.gov)**

## **Communicable Disease Control and Prevention**

### **Division of Communicable Disease Control and Prevention**

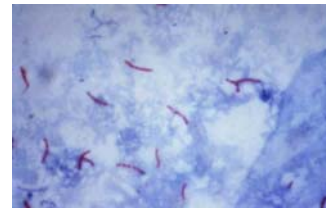
The Division of Communicable Disease Control and Prevention (CDCP) is comprised of nine programs whose collective vision is “all persons and animals in Los Angeles County free from suffering, disability and death due to communicable diseases.” The mission of the Division is to reduce the risk factors and disease burdens of preventable communicable diseases for all persons and animals in Los Angeles County (LAC), in partnership with other programs within the LAC Department of Public Health (DPH), and others outside LAC DPH, including LAC Department of Health Services (DHS), other LAC and City agencies, residents, organizations, communities, and health care providers, through:

- Promotion of healthy behaviors;
- Surveillance of diseases and risk factors as information for public health action;
- Early detection and screening for communicable diseases;
- Offering state-of-the-art laboratory services;
- Provision of effective preventive public health, personal health and animal health services in partnership with the health care community; work with health care providers, hospitals, and treatment centers to implement appropriate procedures and guidelines for treatment and prevention of communicable diseases; and
- Conduct of communicable disease investigations and control measures in humans and animals.

The nine programs of the Division (organizational chart attached) are: Tuberculosis Control (TBC) Program, Public Health Laboratory (PHL), Sexually Transmitted Disease (STD) Control Program, Immunization Program (IP), Acute Communicable Disease Control Program (ACDC), HIV Epidemiology (HIV EPI), Veterinary Public Health & Rabies Control Program, Public Health Employee Liaison (PHEL), and the Public Health Education in Medicine Program (PHEM).

### **Tuberculosis Control Program**

The vision of the Tuberculosis Control (TBC) Program is to eliminate tuberculosis from native and foreign born populations of LAC. The mission of the TBC Program is to prevent the transmission of TB within LAC through early detection of active disease and treatment of latent infection. The activities of the TBC Program include: accepting and confirming incoming disease notification reports into the TBC Registry; ensuring that all suspects and cases are referred to the appropriate Public Health Center; providing consultative services in compliance with TBC policies, guidelines and objectives, including for multidrug-resistant TB cases; analyzing TB surveillance data; designing special epidemiological investigations; conducting education programs to help providers understand TB control issues and policies and communities to raise awareness about TB infection and disease; and issuing legal orders if a patient is suspected of endangering the



## **Communicable Disease Control and Prevention**

public's health. TBC Program also manages two Refugee Health Program teams providing general health screenings, TB testing, immunizations, medical referrals for all refugees entering LAC, including ensuring follow-up of all immigrants entering LAC who are diagnosed with TB disease prior to entering the United States.

### **Public Health Laboratory**



The vision of the Public Health Laboratory (PHL) is to be recognized nationally as a premier public health laboratory. The mission of the PHL is to improve and protect public health through the provision of information from timely, cost-effective, and sophisticated testing. The PHL is a specially licensed laboratory responsible for supporting all disease control and environmental health activities within Public Health programs and services. The PHL supports epidemiologic investigations and programs to prevent and control infectious disease and pollution of air, water, and food. The PHL provides laboratory services for county Public Health and personal health centers, 6 county hospitals, county environmental management and veterinary units, and private providers.

### **Sexually Transmitted Disease Program**

The vision of the Sexually Transmitted Disease (STD) Program is a LAC free of sexual disease transmission. The mission of the STD program is to prevent and control sexually transmitted diseases in partnership with the communities of LAC. The activities of the STD Program include sexually transmitted infection surveillance, prevalence monitoring and epidemiological analysis. The STD Program also provides community-based awareness and education including professional education, training, and medical consultation as well as patient education and partner counseling. Additionally the STD Program conducts quality assurance and program evaluation. Finally, the STD Program is responsible for research and policy development for key STD control areas, including access to care, diagnosis and treatment, quality of care, and partner services and notification.



### **Immunization Program**



The vision of the Immunization Program (IP) is Healthy children and adults, free of vaccine-preventable diseases. The mission of IP is to improve immunization coverage levels and prevent the occurrence of vaccine-preventable diseases. Many of the activities are

## Communicable Disease Control and Prevention

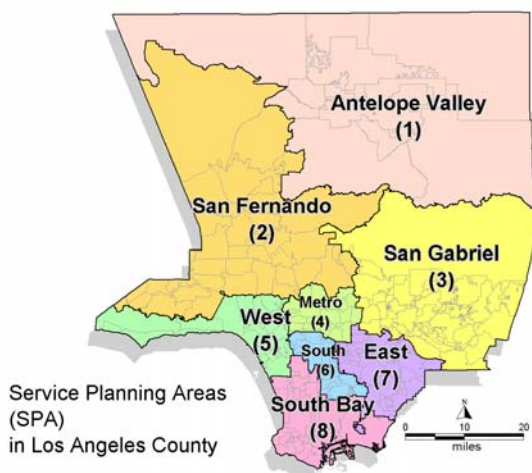
specifically directed toward communities with children at high risk of under-immunization. The IP partners with non-profit organizations to provide outreach and immunization services in areas with large numbers of unimmunized and underimmunized children providing consultation on vaccine management, storage, and handling issues for LAC Public Health and personal health clinics, community “non-profit” clinics, schools, and universities. The IP also is responsible for the surveillance, outbreak investigation and control of vaccine-preventable diseases. Finally IP provides professional education and training on all immunization related issues and promotes enrollment of immunization providers into the regional immunization registry, know as LINK.

### Acute Communicable Disease Control Program

The vision of the Acute Communicable Disease Control (ACDC) Program is to keep LAC residents free of preventable communicable disease and be prepared to meet the challenge of emerging diseases. The ACDC’s mission is to reduce the incidence of communicable disease (other than TB, STDs, and HIV/AIDS) in LAC utilizing the tools of surveillance, outbreak response, education, and preparedness activities. The ACDC Program conducts surveillance, investigates disease outbreaks and makes recommendations for control measures for over 80 diseases and disease syndromes; recommends policies and procedures for DPH activities related to acute infectious and communicable diseases; interprets and enforces State and federal laws and regulations; interfaces with other local (cities, universities), state, national, and federal agencies; collaborates with programs concerned with public health; participates in state, national and international forums; supports the community by providing consultation and professional education for medical providers in the community; assists in training resident physicians and other healthcare professionals; and proactively addresses public concern by educating and addressing inquiries of the news media on acute communicable diseases.



### HIV Epidemiology



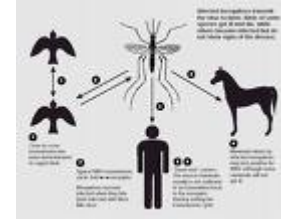
The vision of the HIV Epidemiology (HIV EPI) Program is to reduce the spread and impact of HIV/AIDS throughout LAC. The mission of the HIV EPI Program is to collect, analyze, and disseminate HIV/AIDS surveillance and epidemiologic study data essential for the planning, implementation, and evaluation of programs and policies involving HIV and AIDS care, prevention, education, and

## **Communicable Disease Control and Prevention**

research to decrease the incidence of HIV/AIDS in LAC. The activities of the HIV EPI Program include: maintain an HIV/AIDS registry for LAC (reporting prevalence and incidence of HIV cases as well as evaluating HIV surveillance system performance); obtain a population measure of HIV incidence; and implement a standardized, population-based HIV Risk Behavioral Surveillance System.

### **Veterinary Public Health & Rabies Control**

The vision of Veterinary Public Health & Rabies Control (VPHRC) Program is the residents of LAC are protected from zoonoses and animals are free of reportable animal diseases. The mission of the VPHRC Program is to protect the health and well-being of the residents of LAC by surveillance and control of zoonoses and all reportable animal diseases which affect animals of commercial importance, and to enforce applicable laws and ordinances. The activities of the VPHRC Program include: enforce county and state rabies control mandates (animal bites are required by local and state law to be investigated by the health officer); develop policies that affect VPHRC; disease surveillance of animals (recognizing that animals can serve as sentinels for disease that may affect humans); and educate professional students, clinicians, animal control personnel and the public.



### **Public Health Employee Liaison**

The vision of Public Health Employee Liaison (PHEL) office is a healthy, protected, DPH emergency prepared workforce. The mission is to structure, empower and maintain competent, self-reviewing worker health functions that ensure employer knowledgeable support and worker timely receipt of job-related medical services essential to protect health, especially for occupational public health protection. The activities of the PHEL office include: advocate, support and cooperatively link worker health functions to the employer safety program (essential for OSHA compliance); ensure LAC DPH employees have health care as related to a workers job-related health issues; assure public health worker health assessments by access to LAC Department of Health Services employee health services (EHS) units without cost to the worker; develop medical protocols with EHS for DPH workers that comply with Cal/OSHA and CDC recommendations; coordinate DPH interactions with EHS units for uniformity, compliance, appropriateness, and worker medical confidentiality in compliance with legal requirements; create and maintain authorization lists for DPH workers to seek care at EHS; maintain DPH Employee medical records as they relate to occupation; and assist in Screening DHS healthcare workers for TB.

### **Public Health Education in Medicine**

The vision of the Public Health Education in Medicine (PHEM ) Program is DHS primary care physicians who understand the relationship between clinical practice and public health practice. The mission is to assure availability of public health content in the training programs of DHS primary care resident physicians. The PHEM Program

## ***Communicable Disease Control and Prevention***

provides education regarding public health for physicians-in-training. The primary target group is LAC DHS primary care residents (Family Medicine, Obstetrics-Gynecology, Pediatrics and Internal Medicine); however the program also works with other physicians-in-training. PHEM provides didactic and experiential public health education at hospitals and public health sites.

**Communicable Disease Control and Prevention**

**Los Angeles County Department of Public Health**

**Communicable Disease Control and Prevention**

