



MENINGOCOCCAL DISEASE
Reported Meningococcal Disease Cases and Rates* per 100,000 by Age Group, Race/Ethnicity, and SPA
Los Angeles County, 2007-2011

	2007 (N=24)			2008 (N=30)			2009 (N=21)			2010 (N=26)			2011 (N=37)		
	No.	(%)	Rate/ 100,000	No.	(%)	Rate/ 100,000	No.	(%)	Rate/ 100,000	No.	(%)	Rate/ 100,000	No.	(%)	Rate/ 100,000
Age Group															
<1	3	12.5	2.0	3	10.0	2.1	1	4.8	0.7	2	7.7	1.4	0	0.0	0.0
1-4	3	12.5	0.5	1	3.3	0.2	1	4.8	0.2	2	7.7	0.3	1	2.7	0.2
5-14	1	4.2	0.1	6	20.0	0.4	1	4.8	0.1	1	3.8	0.1	1	2.7	0.1
15-34	6	25.0	0.2	6	20.0	0.2	10	47.6	0.4	8	30.8	0.3	12	32.4	0.4
35-44	5	20.8	0.3	5	16.7	0.3	0	0.0	0.0	4	15.3	0.3	10	27.0	0.7
45-54	1	4.2	0.1	3	10.0	0.2	4	19.0	0.3	5	19.2	0.4	3	8.1	0.2
55-64	3	12.5	0.3	4	13.3	0.4	4	19.0	0.4	1	3.8	0.1	5	13.5	0.5
65+	2	8.3	0.2	2	6.7	0.2	0	0.0	0.0	3	11.5	0.3	5	13.5	0.5
Unknown	0	0.0		0	0.0		0	0.0		0	0.0		0	0.0	
Race/Ethnicity															
Asian	1	4.2	0.1	1	3.3	0.1	0	0.0	0.0	1	3.8	0.1	4	10.8	0.3
Black	3	12.5	0.4	4	13.3	0.5	4	19.0	0.5	7	26.9	0.8	12	32.4	1.4
Hispanic	11	45.8	0.2	20	66.7	0.4	9	42.9	0.2	11	42.3	0.2	11	29.7	0.2
White	9	37.5	0.3	4	13.3	0.1	7	33.3	0.2	7	26.9	0.2	10	27.0	0.3
Other	0	0.0	0.0	0	0.0	0.0	0	0.0	0.0	0	0.0	0.0	0	0.0	
Unknown	0	0.0		1	3.3		1	4.8		0	0.0		0	0.0	
SPA															
1	1	4.2	0.3	2	6.6	0.6	1	4.8	0.3	1	3.8	0.3	1	2.7	0.3
2	4	16.7	0.2	3	10.0	0.1	5	23.8	0.2	3	11.5	0.1	9	24.3	0.4
3	1	4.2	0.1	4	13.3	0.2	1	4.8	0.1	3	11.5	0.2	2	5.4	0.1
4	3	12.5	0.2	6	20.0	0.5	2	9.5	0.2	2	7.7	0.2	5	13.5	0.4
5	1	4.2	0.2	5	16.7	0.8	2	9.5	0.3	2	7.7	0.3	1	2.7	0.2
6	7	29.2	0.7	7	23.3	0.7	5	23.8	0.5	6	23.1	0.6	9	24.3	0.8
7	4	16.7	0.3	2	6.7	0.1	2	9.5	0.1	3	11.5	0.2	4	10.8	0.3
8	3	12.5	0.3	1	3.3	0.1	3	14.3	0.3	6	23.1	0.5	6	16.2	0.5
Unknown	0	0.0		0	0.0		0	0.0		0	0.0		0	0.0	

*Rates calculated based on less than 19 cases or events are considered unreliable.



Figure 1. Incidence Rates of Meningococcal Disease LAC and US, 1999-2011

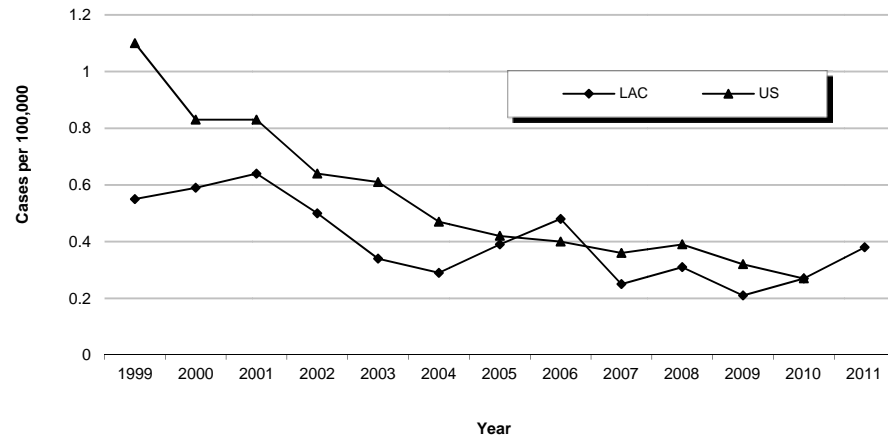


Figure 3. Percent Cases of Meningococcal Disease by Race/Ethnicity, LAC, 2011 (N=37)

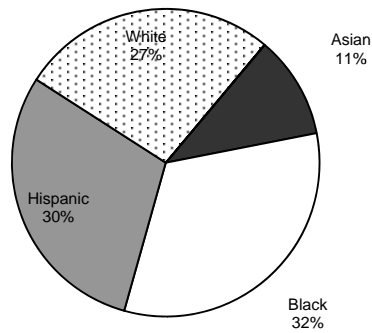


Figure 2. Incidence Rates of Meningococcal Disease Cases by Age Group, LAC, 2011 (N=37)

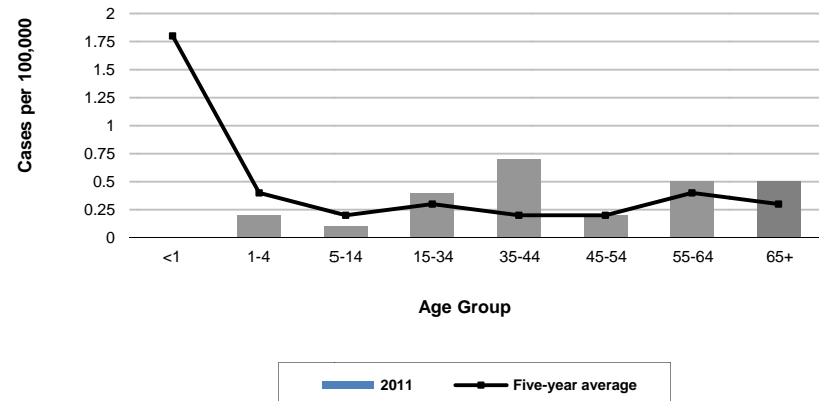


Figure 4. Incidence Rates of Meningococcal Disease Cases by Race/Ethnicity, LAC, 2006-2011

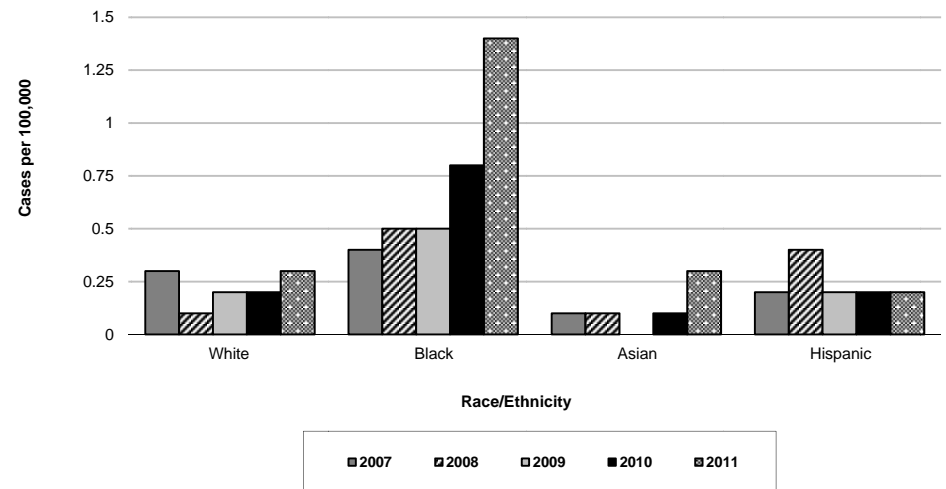




Figure 5. Reported Meningococcal Disease Cases by Month of Onset, LAC, 2011 (N=37)

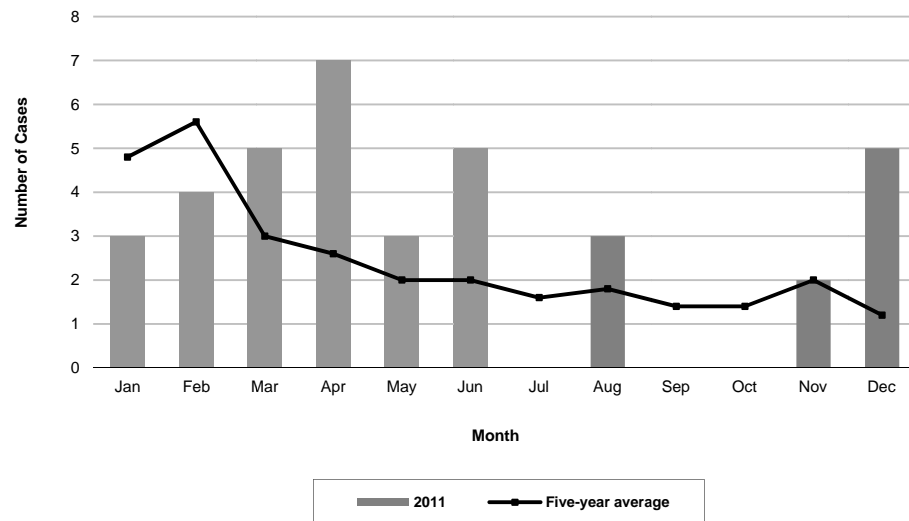


Figure 6. Incidence Rates of Meningococcal Disease by SPA LAC, 2011 (N=37)

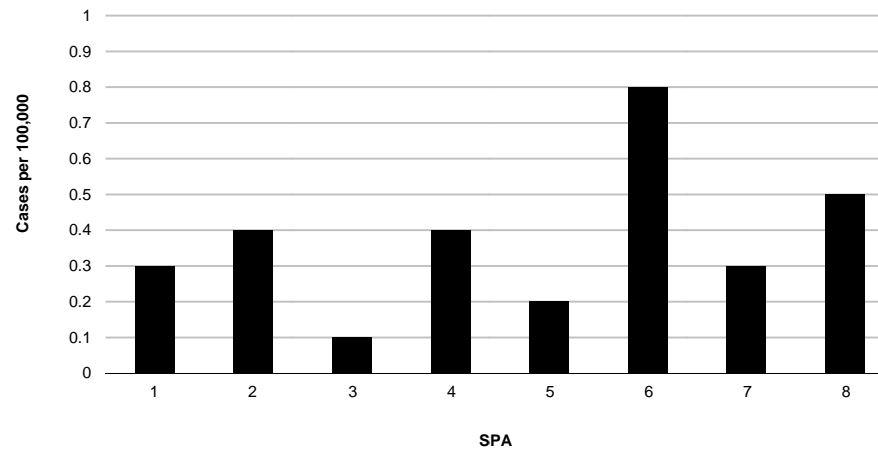


Figure 7. Meningococcal Disease by Serogroup LAC, 2007-2011

