

INFLUENZA WATCH

April 6, 2012
Surveillance Week 13
Volume 6, Issue 12

Flu Surveillance and Related Disease Updates for Los Angeles County

Flu Activity Peaked, Now Declining

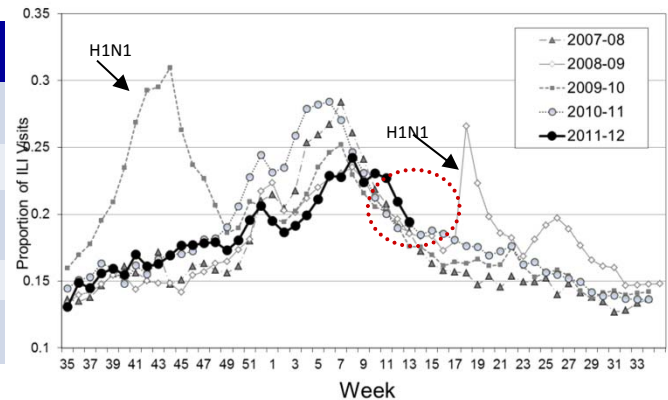
After a generally slow, steady climb in prevalence since the beginning of the year, current surveillance data indicates that influenza activity peaked in Week 12 (15.8%) and has begun to decline in Week 13 (11.1%)(Figure 2). Overall ILI activity (Figure 1) peaked earlier than influenza. Activity of other circulating respiratory viruses (RSV: 13.9% & hMPV: 5.6%) may have leveled off, while rhinovirus increased (13.0%). After peaking early in the season, parainfluenza activity has been minimal since the beginning of the year. Ten deaths in which influenza was a contributing cause have been confirmed in Los Angeles County, including two pediatric deaths (Table 1). Obesity was a risk factor in half of the adult influenza deaths.

**Table 1. LA County Surveillance Summary (2011-2012)
Surveillance Week 13**

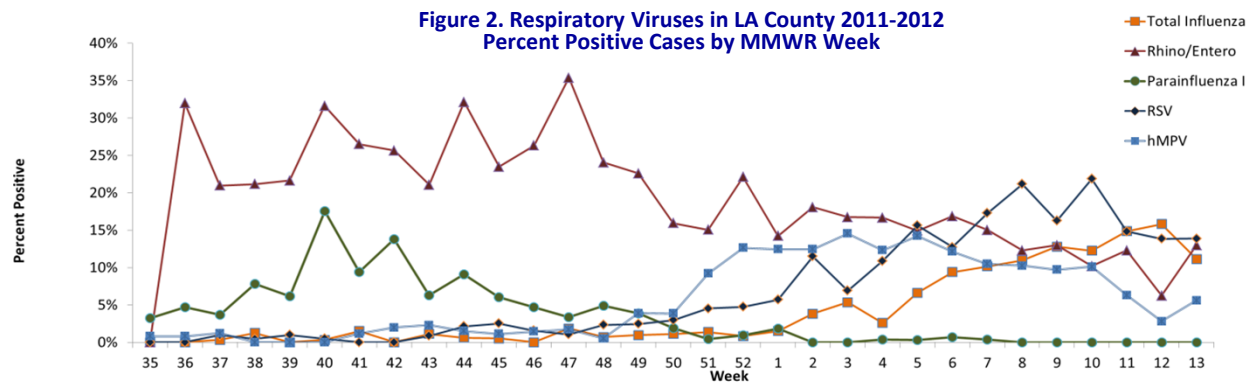
LA County Surveillance Summary	Week 13	2011-2012 Season YTD
Positive Flu Tests / Total Tests (Percent Positive Flu Tests)	77 / 691 (11.1%)	941 / 15,661 (6.0%)
Percent Flu A / B	95 / 5	90 / 10
Positive RSV Tests / Total Tests (Percent Positive RSV Tests)	64 / 461 (13.9%)	968 / 10,923 (8.9%)
Community Respiratory Outbreaks	1	19
Flu Deaths, Confirmed (Pediatric Deaths, Confirmed)	-----*	10 (2)

* Due to the lag time in reporting and confirmation of cause, weekly flu death data is delayed.

**Figure 1. Influenza-like Illness ED Visits in LA County (2007-2012)
Surveillance Week 13**

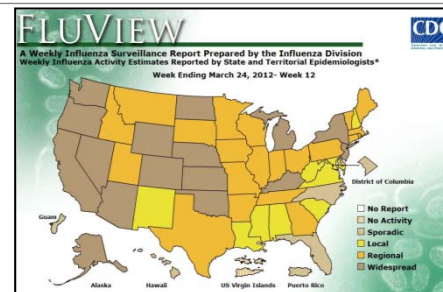


**Figure 2. Respiratory Viruses in LA County 2011-2012
Percent Positive Cases by MMWR Week**



Estimates of 2011-2012 Influenza Vaccine Effectiveness

Two recent articles highlighted in Eurosurveillance found moderate effectiveness (~55%) of influenza vaccine in populations presenting to general practitioners or pediatricians with influenza-like illness (ILI). Both studies compared patients who had been vaccinated at least 14 days before symptom onset with those who had not been vaccinated. The Spanish study available at <http://tinyurl.com/6ot8k5u> estimated a 55% vaccine effectiveness (VE) against any type of influenza virus and 54% against influenza A(H3N2) virus. The Australian study available at <http://tinyurl.com/7nsdln7> estimated a VE against all influenza of 56%, with little variation in VE by virus type and subtype. Results from these studies are in agreement with VE generally observed in the US.



During Week 13, national tracking of flu showed widespread activity in half as many states as Week 11 (10 states, including California); regional activity in 19 states, and local activity in 13 states.

Contact Information: fluwatch@listserv.ph.lacounty.gov
Acute Communicable Disease Control (213) 240-7941
www.publichealth.lacounty.gov/acd

