



# Community Town Hall

Environmental Sampling in the the City Terrace  
Community and Next Steps



# Meeting Goals

**Provide information on  
environmental sampling in your  
community**

**Answer Questions**

**Review Next Steps**



# Environmental Sampling in the City Terrace Community



# Why did the County conduct environmental sampling?

In 2019, Supervisor Hilda Solis proposed a Board motion that directed the County to take action to reduce environmental hazards near the Eastern Hills Landfills.

- **Actions included:**

- Expediting the installation of a landfill gas extraction system in the County's portion of the Cogen Landfill.
- Soil vapor and air sampling to evaluate if there are potential health risks to residents living near the Eastern Hills Landfills.





# What was the community sampling area?

- The sampling area was identified as the Cogen landfill and properties **within 1,000 feet**.
- Of 152 households asked, **29 households** agreed to outdoor sampling on their properties.
- From August through September 2021, outdoor soil vapor and air samples were collected.



# What were the initial sampling results?

- 18 different chemicals were found in the soil vapor samples, but not every chemical was detected on every property.
- Outside all 29 residences, benzene was detected in the soil vapor at levels that warrant additional investigation.
- Methane was not found in community soil samples except for one detection, close to the landfill border at a low level.
- The levels of benzene measured in the soil vapor outside the homes do not generally pose a health risk. However, the initial testing did not indicate whether there is benzene inside the homes.



# Where is benzene found?

- **Common sources of benzene:**
  - Crude oil, gasoline, cigarette smoke, lubricants, rubber, dyes, paints, glue, detergents, plastics, resins, nylon and synthetic fabrics, and pesticides.
- **Where it is found:**
  - Outdoor air at low levels from cigarette smoke, gas stations, motor vehicle exhaust, and industrial emissions.
  - Indoor air at higher levels from glues, paints, furniture off-gassing, detergents, and contamination from outside the house.
- **Long term exposure to benzene can cause bone/blood cancers (leukemias).**



Based on initial results, more sampling is needed.

- We don't know if benzene is entering the homes.
- We need to do additional sampling to know if benzene, or other chemicals, are still found in the soil outside the homes.
- We need to do indoor air sampling to find out if there is benzene inside the homes and if there is a health risk.





# Any Questions?



# LA County's next steps.

The County is offering to conduct **additional sampling of the 29 properties where sampling was previously performed** to determine if benzene is still found outside and if there are potential health risks inside of the homes.

## **The sampling consists of:**

1. Indoor Air Sampling
2. Outdoor Air Sampling
3. Outdoor Soil Vapor Sampling



# The County is doing outreach in the Eastern Hills area.

- County staff have been in your community providing residents with their initial sampling results and obtaining signed Access Agreements for additional sampling.
- So far, the County has obtained permission to conduct the additional sampling in 19 homes.
- The County also went door to door to all homes in the sampling area to provide a newsletter on recent activities.









# Any Questions?



# If you agreed to have additional sampling done, here's how to prepare for it.

- Remove household products that could be sources of indoor vapors in your home.
  - Common Examples: Crude oil, gasoline, cigarette smoke, lubricants, rubber, dyes, paints, glue, detergents, plastics, resins, nylon and synthetic fabrics, and pesticides.
  - The County will help you check your house for potential sources of indoor vapors prior to sampling.
- Turn off yard sprinklers prior to outdoor sampling.

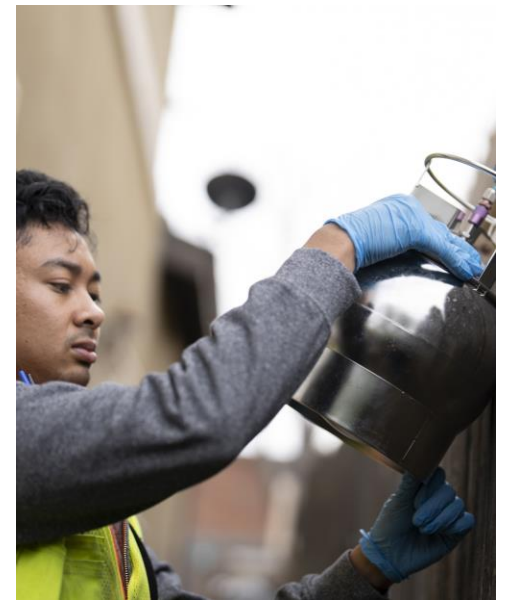


# What does air sampling look like?

- Indoor and outdoor air sampling involves a small metal canister slowly collecting air over a 24-hour period.
- The sampling device will be picked up on the next day.





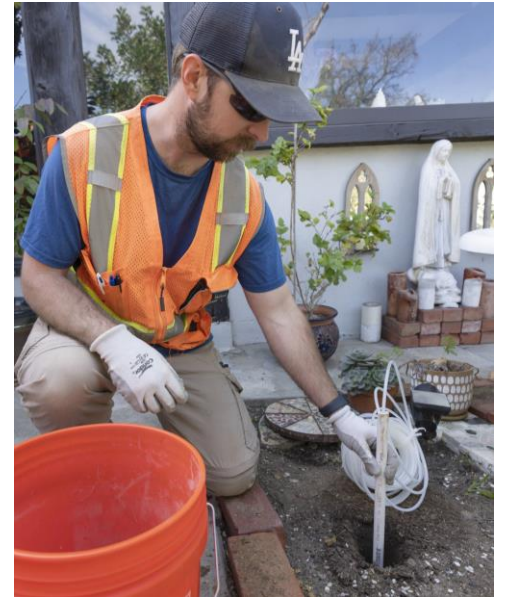
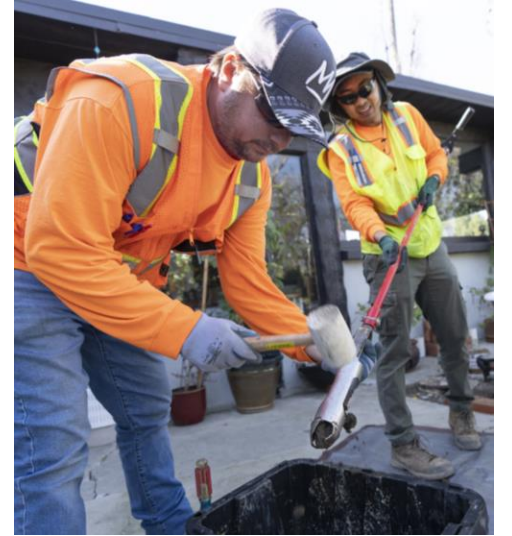




# What does soil vapor sampling look like?

- Soil vapor sampling involves digging a small hole in an unpaved area and inserting a sampling device that extends 5 feet below the surface.
- The sampling device will collect air in a metal canister over a 30-minute period.
- The sampling device will be picked up, the hole will be filled in, and the area will be restored to its prior condition.





# Here's what will happen after the additional sampling is completed and results are evaluated.



- From the time samples are collected, it will take **approximately 4 to 6 weeks** to get the results to homeowners.
- The County will inform the residents of their individual sampling results as they become available through **March and early April**.
- The County will host another Town Hall in April to discuss results.
- Please sign up to receive information regarding ongoing County efforts.



# Thank You

For Additional Information:

- Call **(626) 430-9820** M-F 8:00 a.m. - 5:00 p.m.
- After-hours, leave a message at **(626) 430-9821** and someone will get back to you.
- Email [tox@ph.lacounty.gov](mailto:tox@ph.lacounty.gov)
- Visit our website: [publichealth.lacounty.gov/city\\_terrace](http://publichealth.lacounty.gov/city_terrace)

