

# About

## Environmental Health

The Environmental Health Division inspects businesses to verify compliance with applicable local, State, and Federal codes in the jurisdiction of Los Angeles County. This includes restaurants, markets, bakeries, bars, mobile food vendors, and home-based food services.

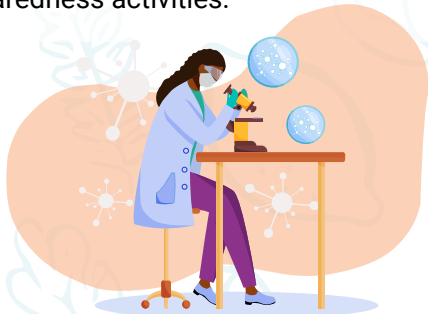
The objective is to prevent foodborne illness through our retail food inspection program and by educating the public.

**Note:** The cities of **Pasadena, Long Beach,** and **Vernon** operate their own health department.



## Acute Communicable Disease Control

The Acute Communicable Disease Control Unit prevents and controls infectious disease (excluding TB, STD, and HIV) in Los Angeles County by implementing tools for surveillance, outbreak response, education, and preparedness activities.



# Contact

## Outbreak Investigation & Evaluation Unit



**Phone**  
(626) 430-5400



**E-mail**  
DPH-EHOutbreak@ph.lacounty.gov



**Location**  
5050 Commerce Drive  
Baldwin Park, CA 91706



**Website**  
[www.publichealth.lacounty.gov/eh](http://www.publichealth.lacounty.gov/eh)

## Acute Communicable Disease Control Unit



**Phone**  
(213) 240-7941



**E-mail**  
acdc2@ph.lacounty.gov



**Location**  
313 N. Figueroa Street, #212  
Los Angeles, CA 90012



**Website**  
[www.publichealth.lacounty.gov/acd](http://www.publichealth.lacounty.gov/acd)

# How to Report Foodborne Illness

ENVIRONMENTAL HEALTH  
DIVISION





## What is an Outbreak?

According to the California Department of Public Health (CDPH), a foodborne outbreak is when two or more people get sick from eating the same contaminated food.

Every **year in the United States, more than 1,300** documented deaths are caused by consuming contaminated food and drink.

There are **56,000** hospitalizations and over **nine million illnesses** due to foodborne illnesses.

The food industry and the Los Angeles County Department of Public Health share the crucial responsibility of ensuring that food and beverages provided to consumers are safe and free from contaminants, to reduce foodborne illness outbreaks or the transmission of communicable diseases.

The **Environmental Health Division** works in collaboration with **Acute Communicable Disease Control (ACDC)** and the Public Health Laboratory to screen complaints and conduct investigations of reported foodborne illnesses.

## Preventing Outbreaks

A food facility is required to notify the local health department when an employee is diagnosed with any of the **seven communicable foodborne diseases or other communicable diseases that are transmissible through food.**



**If a food facility is aware that a food employee has an acute gastrointestinal illness, the Person-In-Charge must restrict the employee from working with open food or exclude the employee from working if diagnosed by a doctor.**

## 7 Communicable Foodborne Disease

1. Salmonella typhi
2. Salmonella species
3. Shigella species
4. Entamoeba histolytica
5. Enterohemorrhagic toxin-  
Escherichia coli
6. Hepatitis A virus
7. Norovirus



## Reporting

If you or a member of your family believes you became sick by eating or drinking something from a food facility in Los Angeles County, follow the instructions below to report foodborne illness online or by phone:

- Report online at: <https://redcap.link/foodcomplaint>
- Report **by calling the ACDC Unit** at (213) 240-7821, or the **Outbreak Investigation & Evaluation Unit** at (626) 430-5400
- Describe food/drink consumed in the last 72 hours, the time symptoms started, and the permitted food facilities' **name, address, date, and time** of meals

### What to Expect After Reporting

You may receive a call to clarify reported information, answer questions about additional meals eaten, and/or request contact information of the people who ate with you. **Remember to provide as much detail as possible when reporting a food borne illness. The information you provide is extremely helpful to the pending investigation**

**If symptoms are severe, report foodborne illness to your doctor.**



**They may request either a blood or stool sample for lab analysis.**